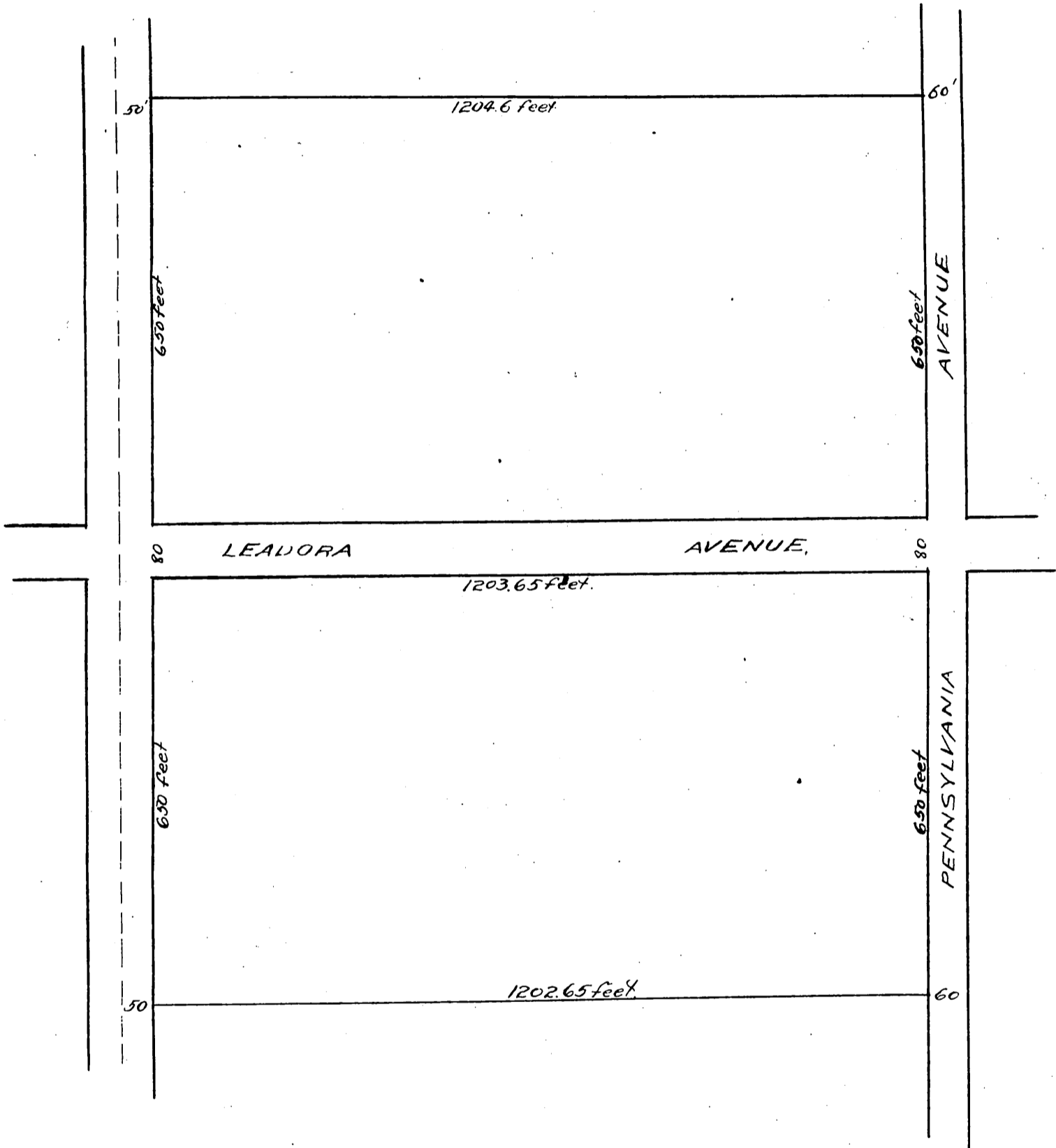


MAP

of J. Benders Addition to Glendora Los Angeles Co. Cal. after the abandonment of certain Streets and Alleys by the Board of Supervisors of Los Angeles County Cal. on Dec 5th 1890. Original Map recorded in Book 25 Page 98 Miscellaneous Records. Reference to which is hereby made.



A full true and correct Copy of the Original recorded Dec. 5 1890 at 33 min. past 11 A.M. at request of John Bender.
John W. Francis County Recorder
By Wm W. Mills Deputy.