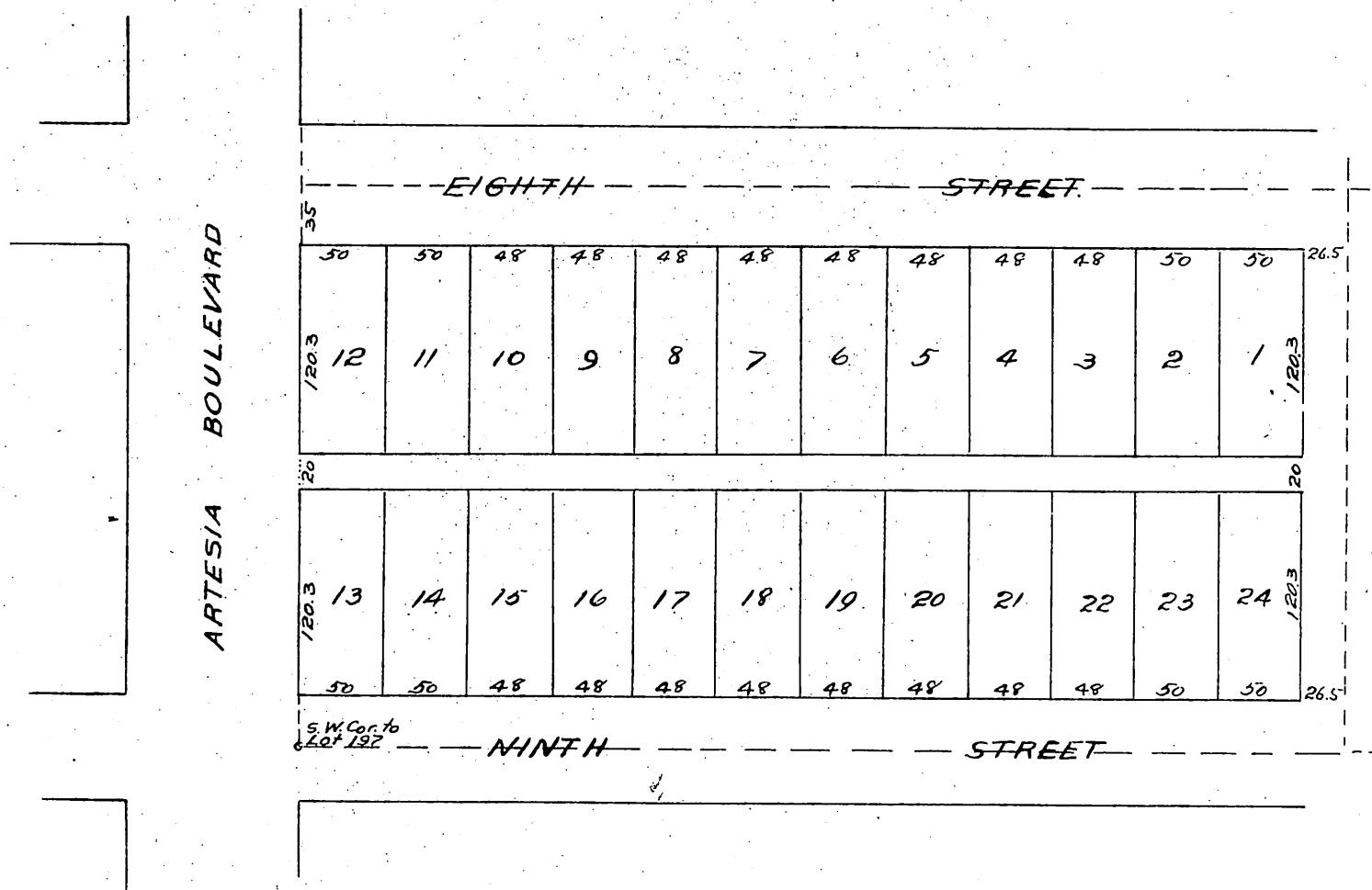


MAP

C.W. Talbot's Subdivision of the South 1/2 of South West 1/4 of Block 197 Pomona Tract, Los Angeles Co. Cal. Surveyed by F.E. Trask, C.E. Jan 1888.

Scale 50 ft to 1 inch.



A full true and correct Copy of the Original
(scale reduced to 100 feet to 1 inch) recorded Dec. 9 1890 at 58 min past 9 A.M.
at request of C. W. Talbot.
John W. Francis County Recorder.
By Wm W. Mills Deputy.