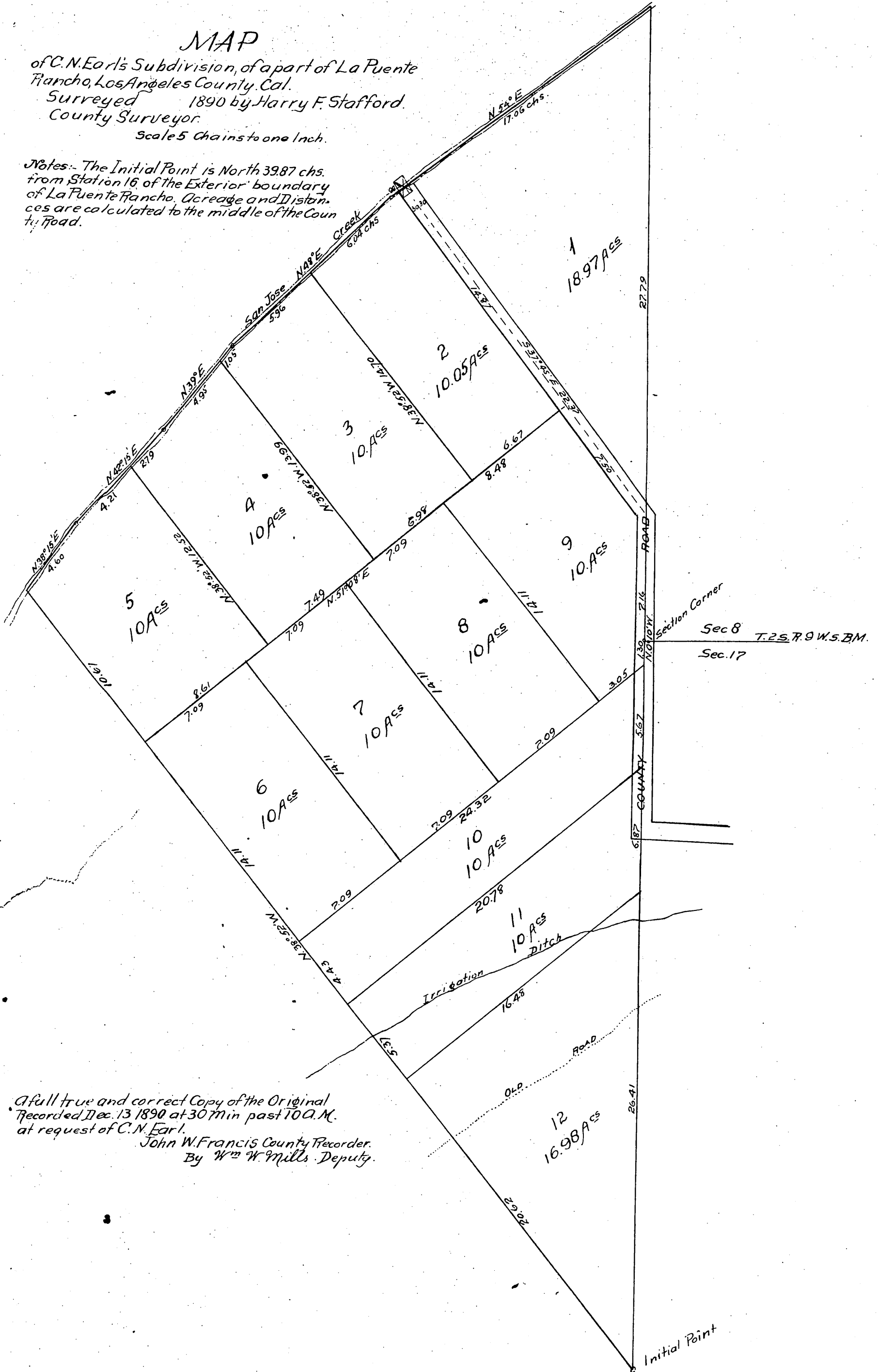


MAP

of C.N. Earl's Subdivision, of a part of La Puente Rancho, Los Angeles County, Cal.
 Surveyed 1890 by Harry F. Stafford,
 County Surveyor.

Scale 5 Chains to one Inch.

Notes: - The Initial Point is North 39.87 chs. from Station 16 of the Exterior boundary of La Puente Rancho. Acreage and Distances are calculated to the middle of the County Road.



A full true and correct Copy of the Original
 Recorded Dec. 13 1890 at 30 min past 10 A.M.
 at request of C.N. Earl.
 John W. Francis County Recorder.
 By Wm W. Mills Deputy.