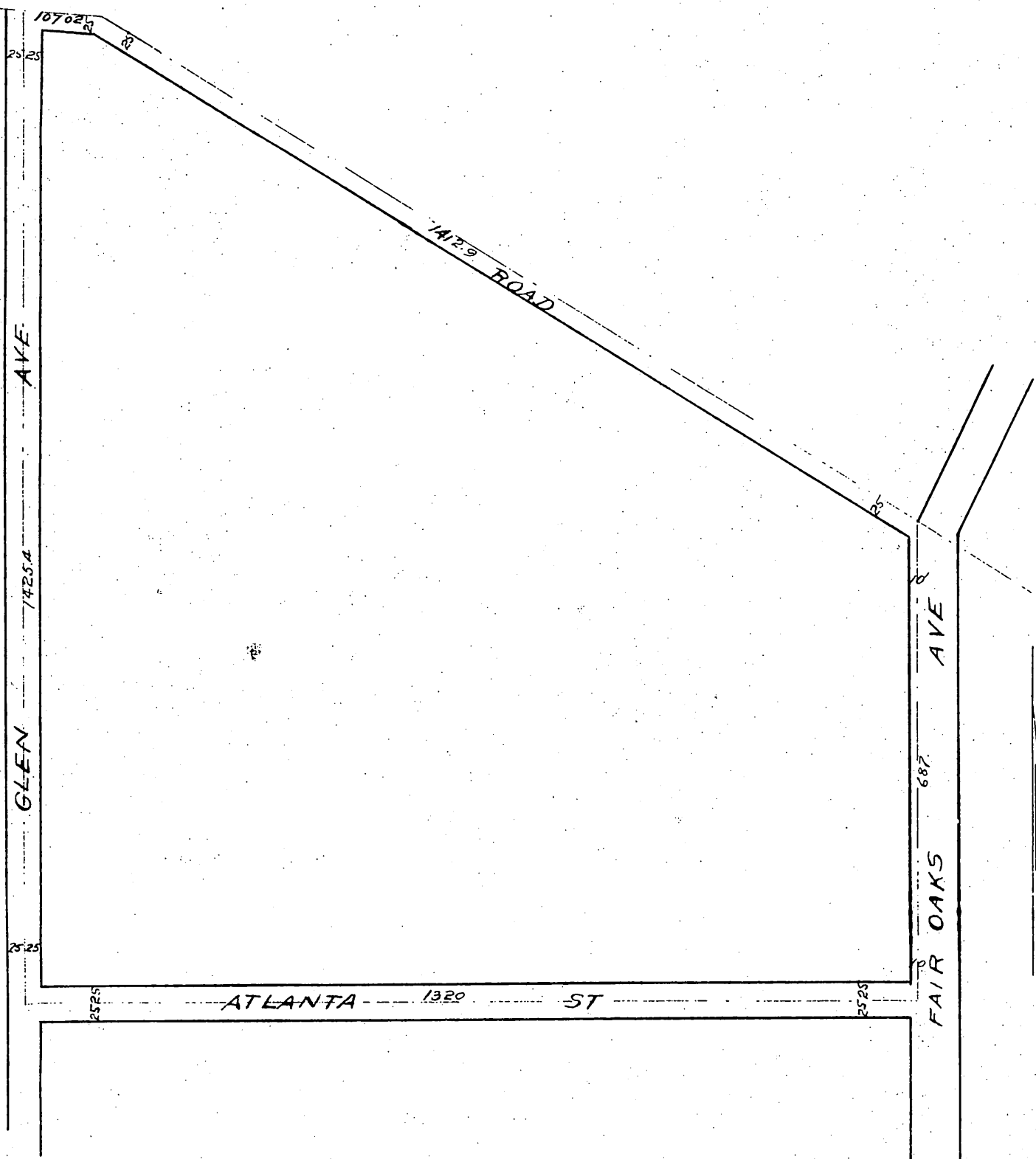


MAP OF Re-Plat

OF
Blks DE & F of Amos Wrights Subdivision of Blk "E"
of the subdivided Lands of J.H. Painter & B.F. Ball.
Recorded in Book 25 Page 26 Miscellaneous Records
of Los Angeles County, Cal.

Containing $32\frac{5}{16}$ Acres.

as Vacated by Order of Board of Supervisors Los
Angeles Co. Recorded Road Book No 3 Page 375
Jan 3^d 1891.



A full, true and correct Copy of the Original
(reduced to the scale of 200 feet to one inch -)
recorded Jan 6 1891 at 26 min. past 1 P.M.
at request of Frank C. Bolt.
J.A. Kelly County Recorder.
By Wm W. Mills Deputy.