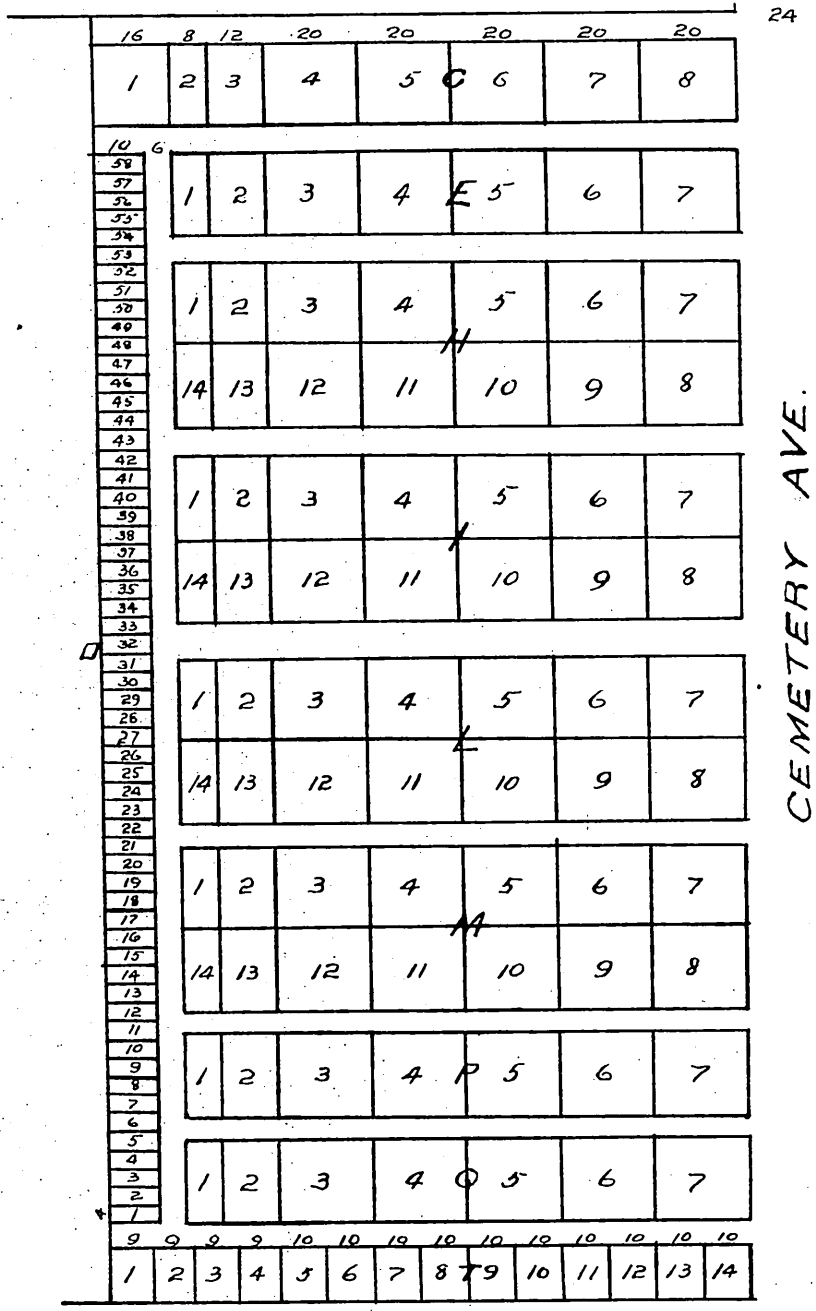
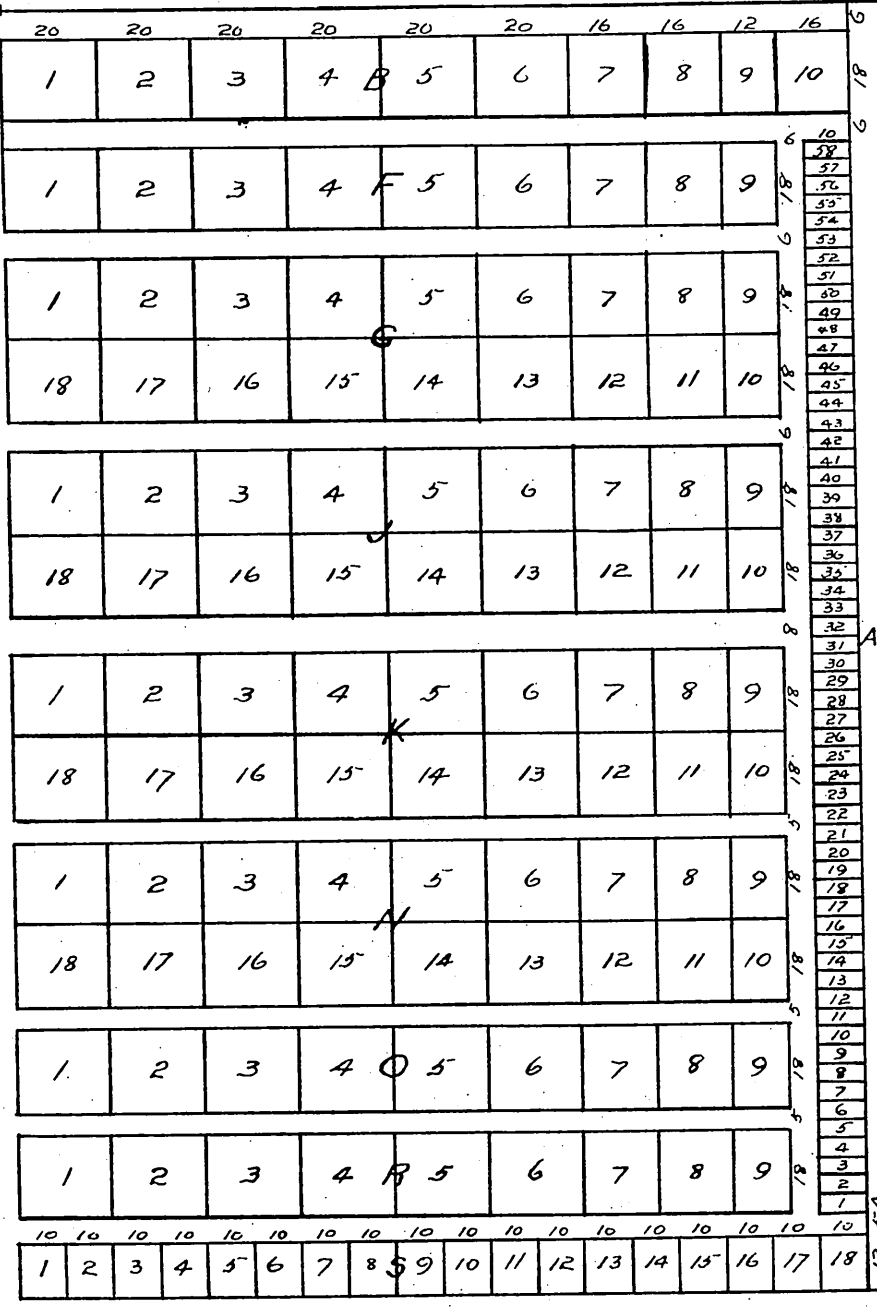


DORLAND-ST.



CEMETERY AVE.



BROADWAY.

PLAT OF WHITTIER CEMETERY ASSOCIATION - GROUNDS

Being Lots 10-11-12-13-14 & 15 of Block 4 of Dorland's Sub-division in Block D of the Pickering Land & Water Co's Sub-division of the John M. Thomas Rancho.

Made at the request of
Willet Dorland Jan 1891.

A full true and correct copy of the Original
Recorded Jan 29 1891 at 46 min past 11 A.M.
at request of Willet Dorland
J.A. Kelly, County Recorder.
By W. W. Malls Deputy.