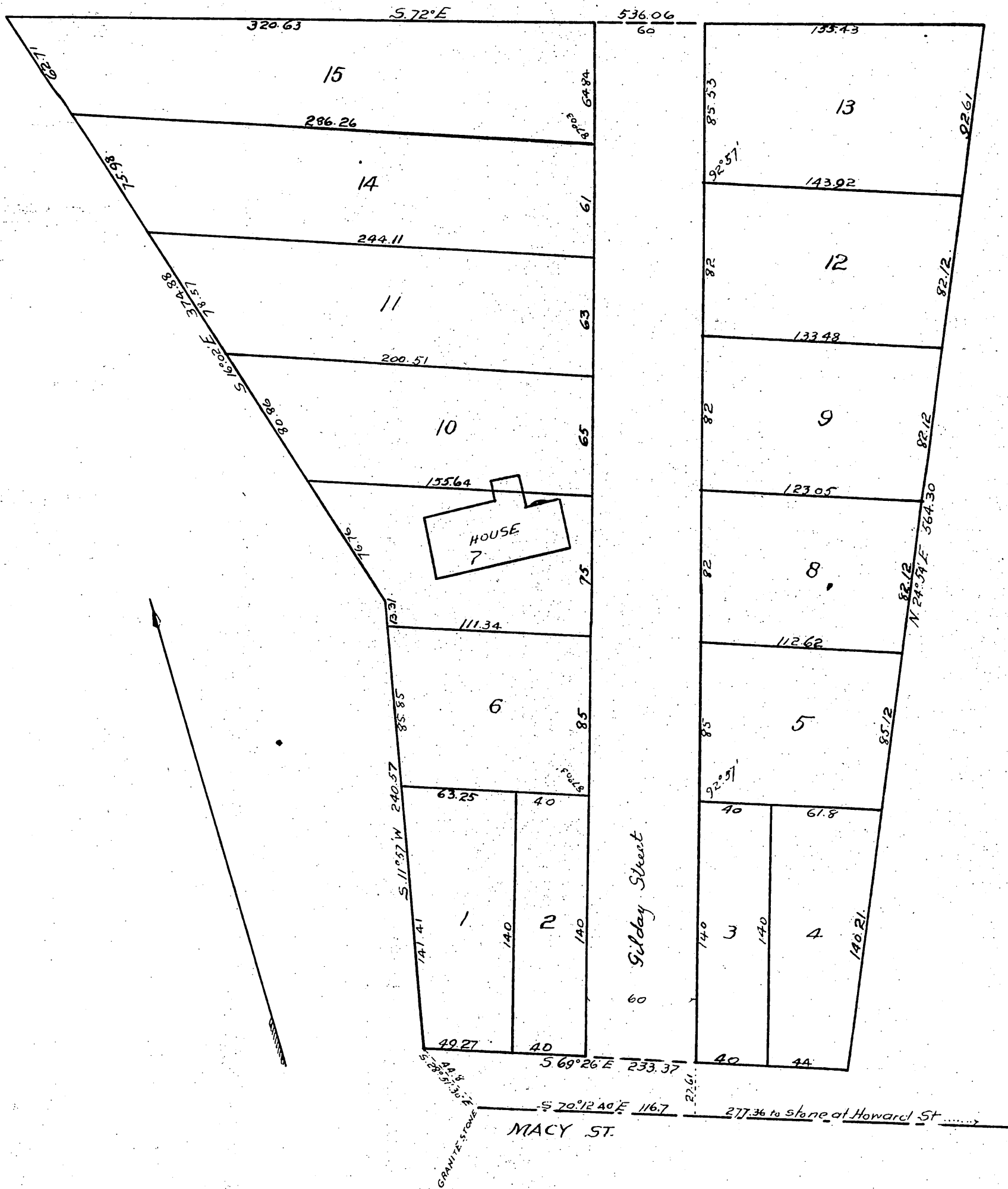


Plat showing
 SUBDIVISION
 of a portion of the
HOOVER VINEYARD TRACT.
 Surveyed by Eaton and Lowmes April 1888

SCALE 40'-1"



A full true and correct copy of original
 (scale reduced to 60'-1") Recorded Nov 17
 1891, at 16 min past 1 p.m. at request of
 Neely & Converse. Gilday Street in pencil
 J. A. Kelly County Recorder.
 By W. W. Mills Deputy.