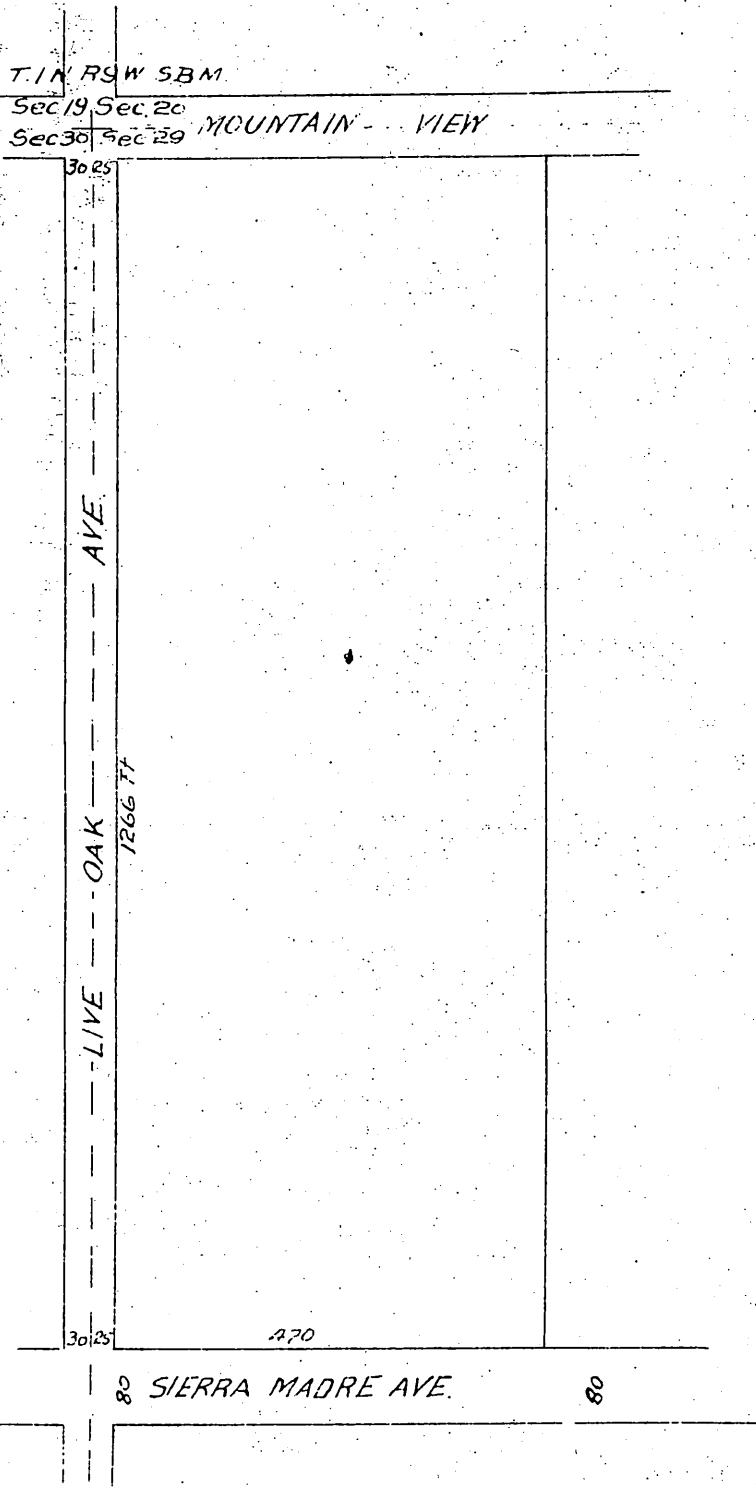




Resurvey of Needham's Subdivision

of the West 15 Acres of NW 1/4 of NW 1/4 of Sec.
29 T. 1 N. R. 9 W. S. B. 1/4 Los Angeles County Calif-
ornia, January 1891.

SCALE 200 FT TO ONE INCH



A full true and correct copy of the Original
Recorded Feb 20 1891 at 50 min. past 11 A.M.
at request of C. N. Earl.
J. A. Kelly County Recorder.
By W. W. Mills Deputy.