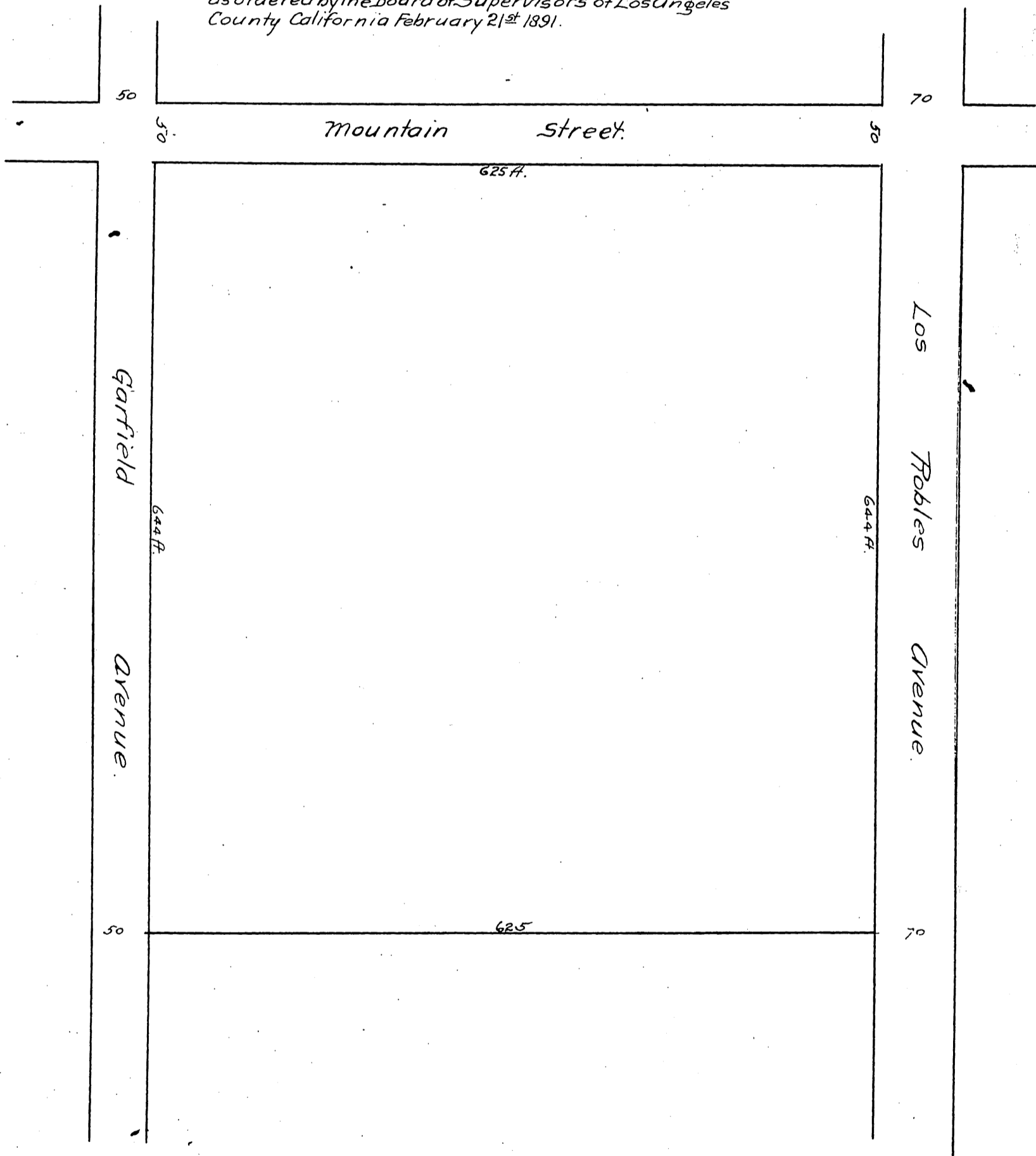


Amended Map
 of
 FARNUM SWENERTON & RUST'S SUBDIVISION
 AT
 PASADENA

(Original map recorded in Book 23 Page 57 Misc. Rec.)
 as ordered by the Board of Supervisors of Los Angeles
 County California February 21st 1891.



A full, true and correct copy of the Original
 Recorded Feb. 23 1891 at 37 min. past 11 O. M. at re-
 quest of Lillian M. Woodward.
 J. H. Kelly. County Recorder.
 By W. W. Mills Deputy.