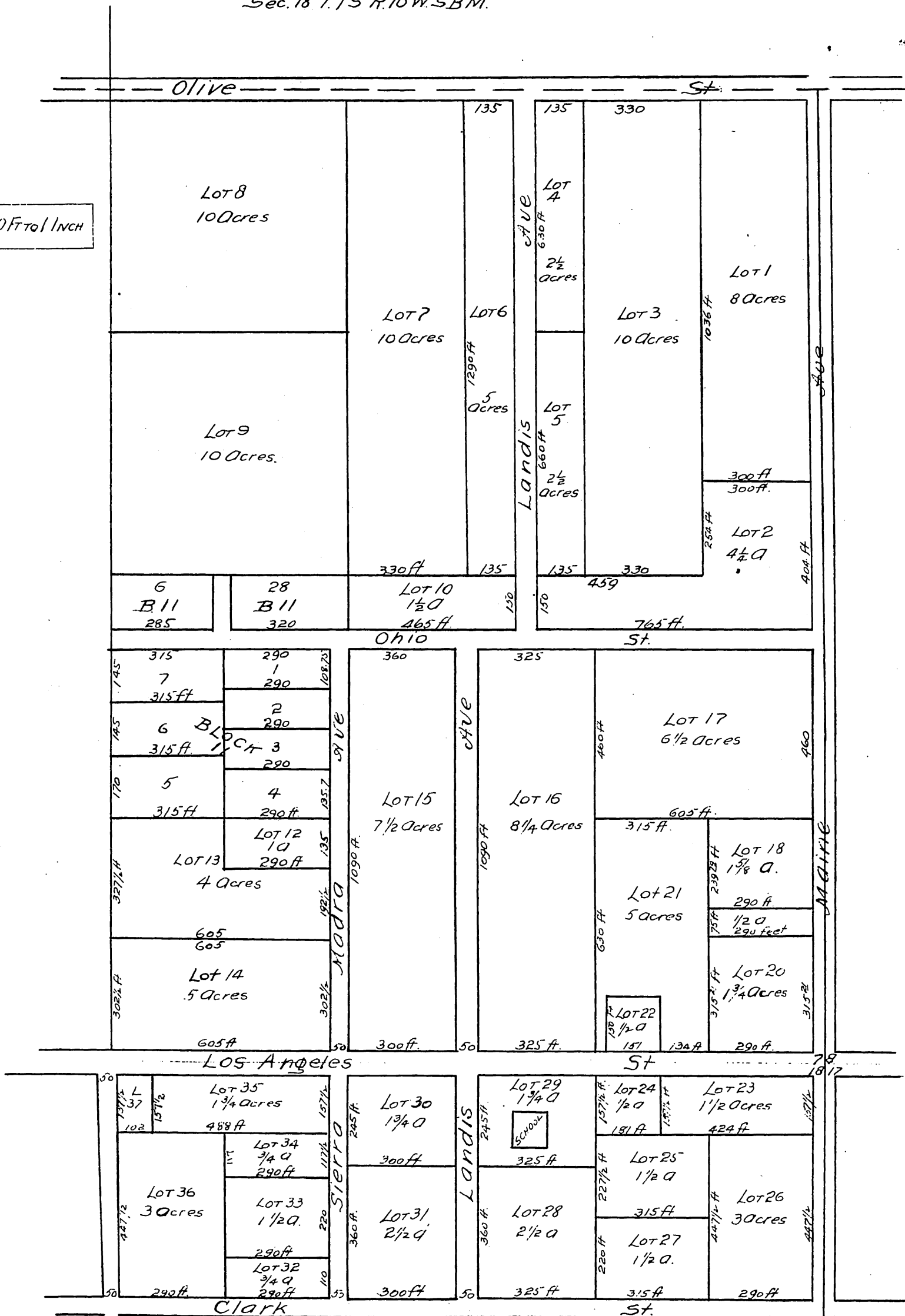


# REVISED MAP of VINELAND OF THE AZUSA.

Being a Subdivision of the E 100 acres of  
the S.E. 1/4 of Sec. 7, and 30 acres in NE 1/4 of  
Sec. 18 T. 15 R. 10 W. S.B.M.

SCALE 200 FT TO 1 INCH



A full true and correct copy of the Original (reduced to scale of 300 Feet to one inch) Recorded Feb. 27, 1891 at 36 min past 11 A.M. at request of L.H. Washburn  
J.A. Kelly County Recorder.  
By W. W. Mills Deputy.