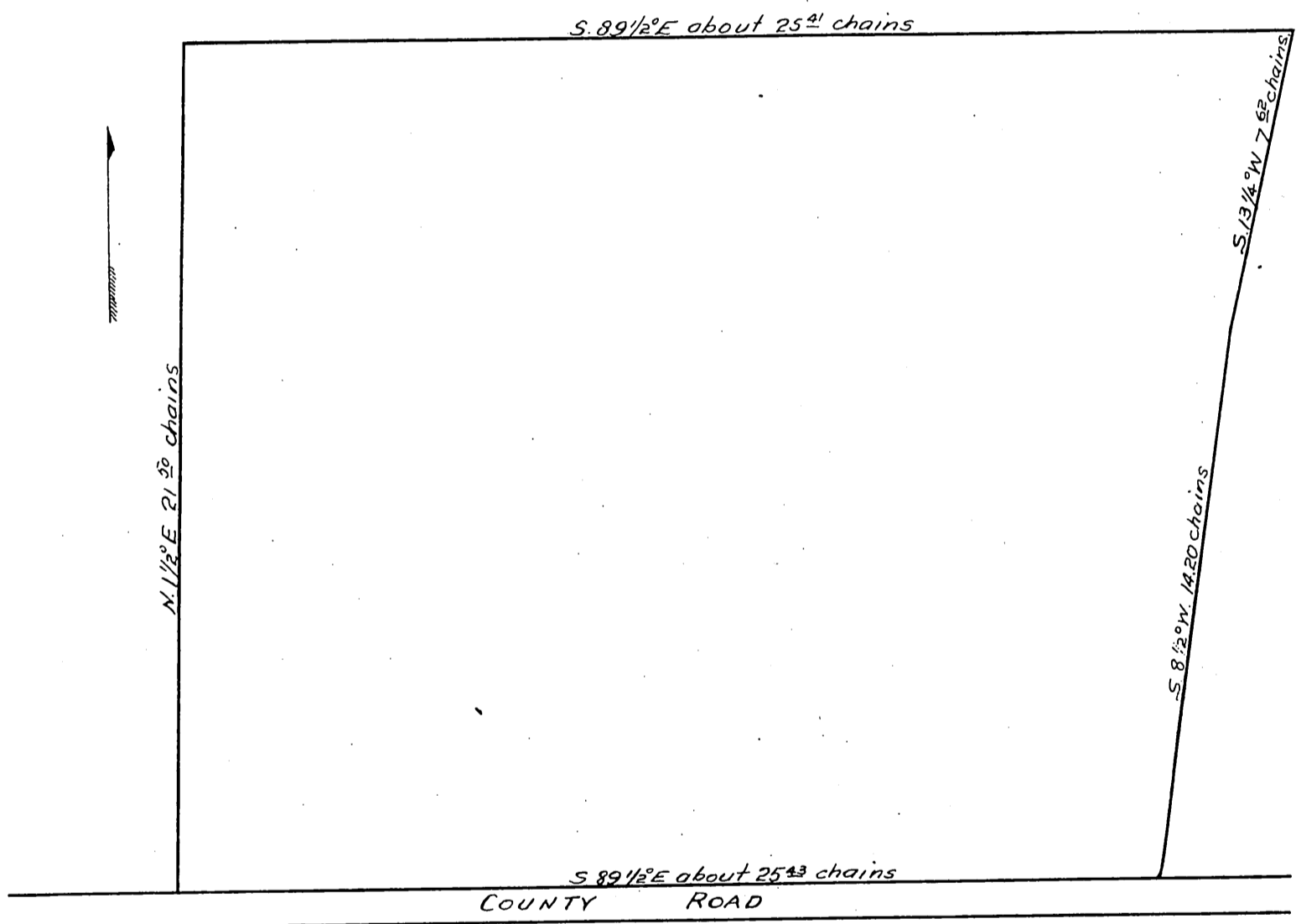




# MAP of LAMANDA PARK TRACT

after vacation of Streets shown on Map recorded  
in Book 24, Page 57. Miscellaneous Records of Los An-  
geles County, said Streets having been closed by or-  
der of the Board of Super visors of said County Feb;  
21<sup>st</sup> 1891



A full true and correct copy of the Original  
(reduced to scale of 4 chains to one inch)  
recorded Feb. 28, 1891 at 59 min. past 10 O.M.  
at request of C.T. Hopkins.  
J.A. Kelly County Recorder  
By W.W. Mills. Deputy.