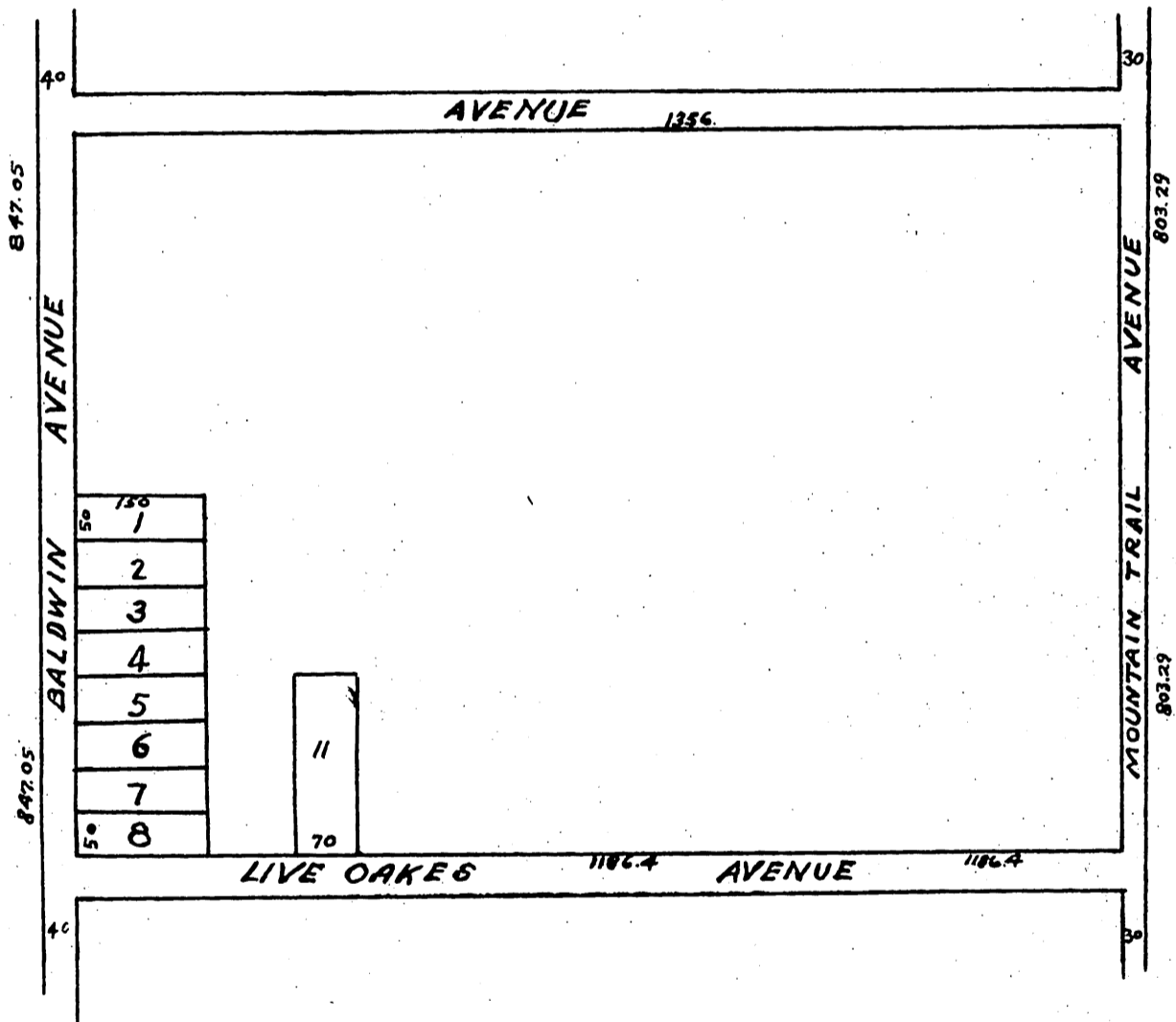


4034

MAP
OF THE
RESURVEY OF THE G.B. DAVIS
TRACT

*Being a Subdivision of the Southern Portions of Lots 6th & 7th Sierra Madre Tract, Sierra Madre L.A. Co. Cal.
 In accordance with an Order of the Board of Supervisors made Feb. 6th, 1891 by which the Street known as Concord Street was abandoned and closed and that all lots except lots 1 to 8 inclusive and lot 11 revert to acreage Said order recorded at Book 3 Pages 407, 408, 409 Road Minutes of the Board of Supervisors L.A. Co. Cal.*



*Recorded at request of G.B. Davis
 Feb. 28, 1891.*