

MAP

of lands purchased and leased for City Park purposes
Pomona, Los Angeles Co. Cal.

Scale 50' to 1"

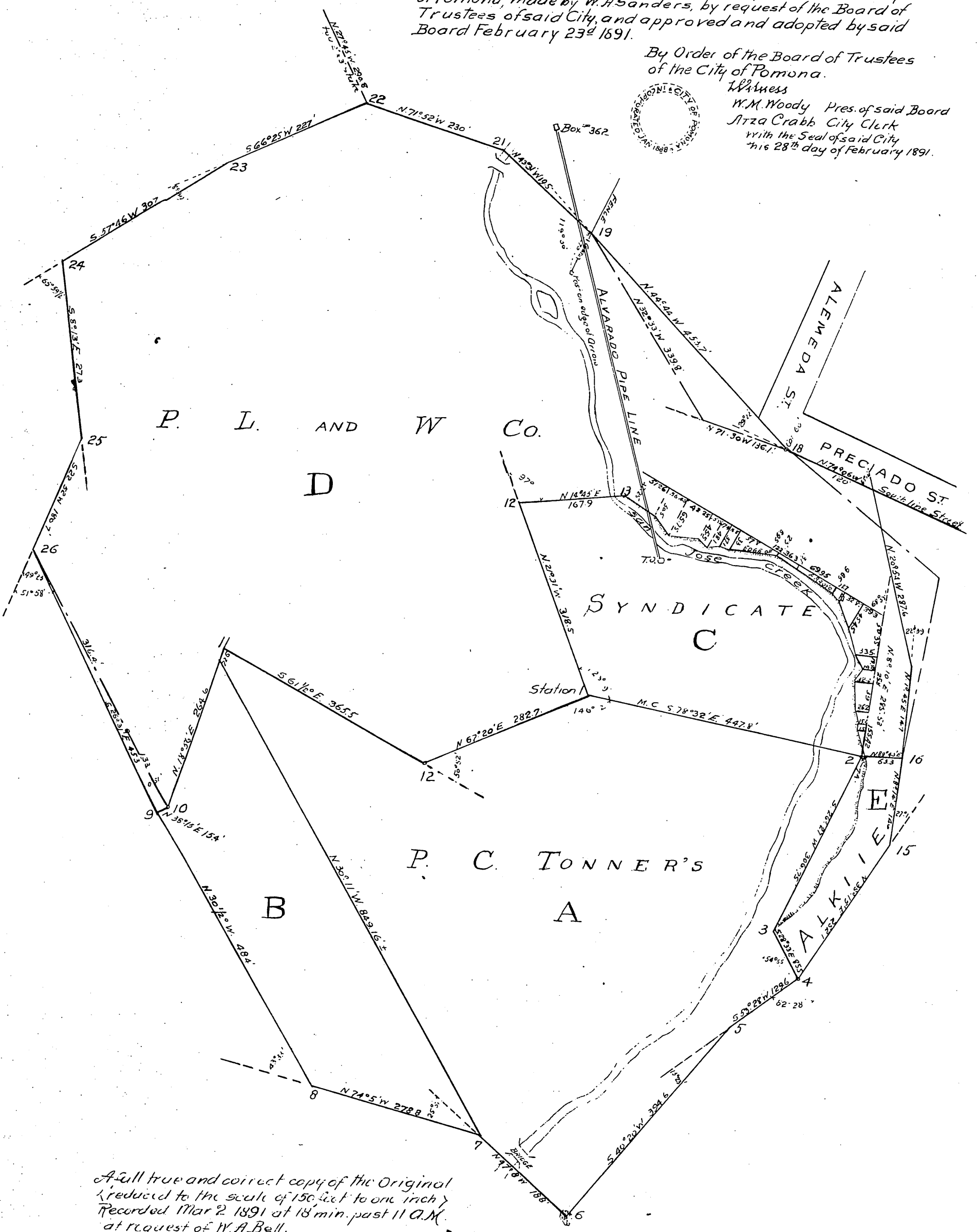
All courses magnetic
From Station 22 to 24 is center of road
W.H. Sanders C.E.

Official Map of lands of the Pomona City Park in the City
of Pomona, made by W.H. Sanders, by request of the Board of
Trustees of said City, and approved and adopted by said
Board February 23^d 1891.

By Order of the Board of Trustees
of the City of Pomona.



Witness
W.M. Woody Pres. of said Board
Atza Crabb City Clerk
with the Seal of said City
this 28th day of February 1891.



A full true and correct copy of the Original
(reduced to the scale of 150 feet to one inch)
Recorded Mar 2 1891 at 18 min. past 11 A.M.
at request of W.A. Bell.

J.A. Kelly, County Recorder.
By W.W. Mills, Deputy.