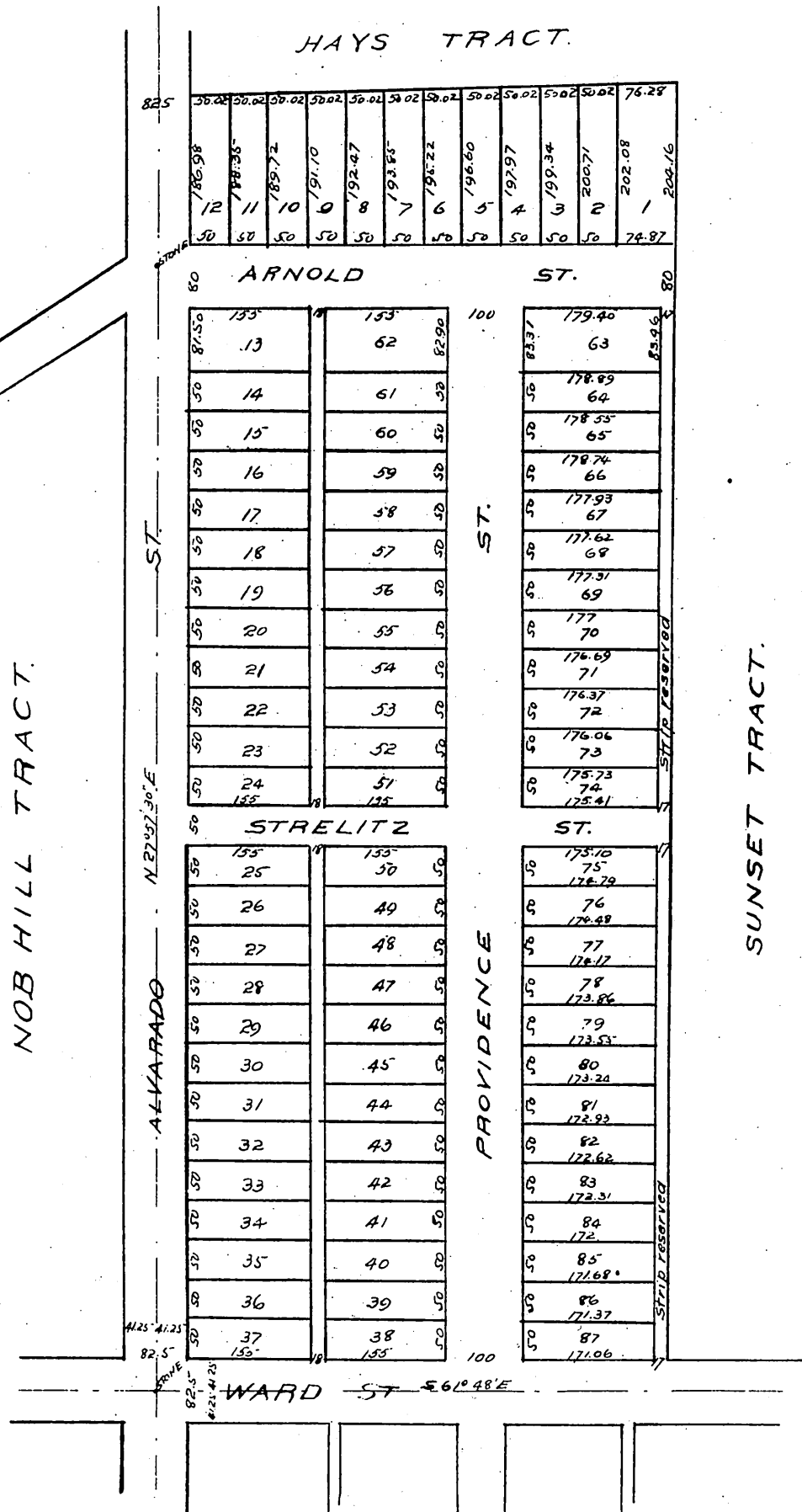


PLAT OF THE EXTENSION OF THE NOB HILL TRACT

being Eaton's Subdivision of the west-
erly 1/2 of Lot 5 Block 38 Hancock's Sur-
vey, Los Angeles City, Cal.

Surveyed Feb'y 1891.

SCALE - 200 FEET TO 1 INCH



A full, true, and correct copy of the original
Recorded May 5, 1891 at 10 min. past 4 p.m.
at request of Fred Eaton

J. A. Helly, County Recorder
By W. W. Mills, Deputy.