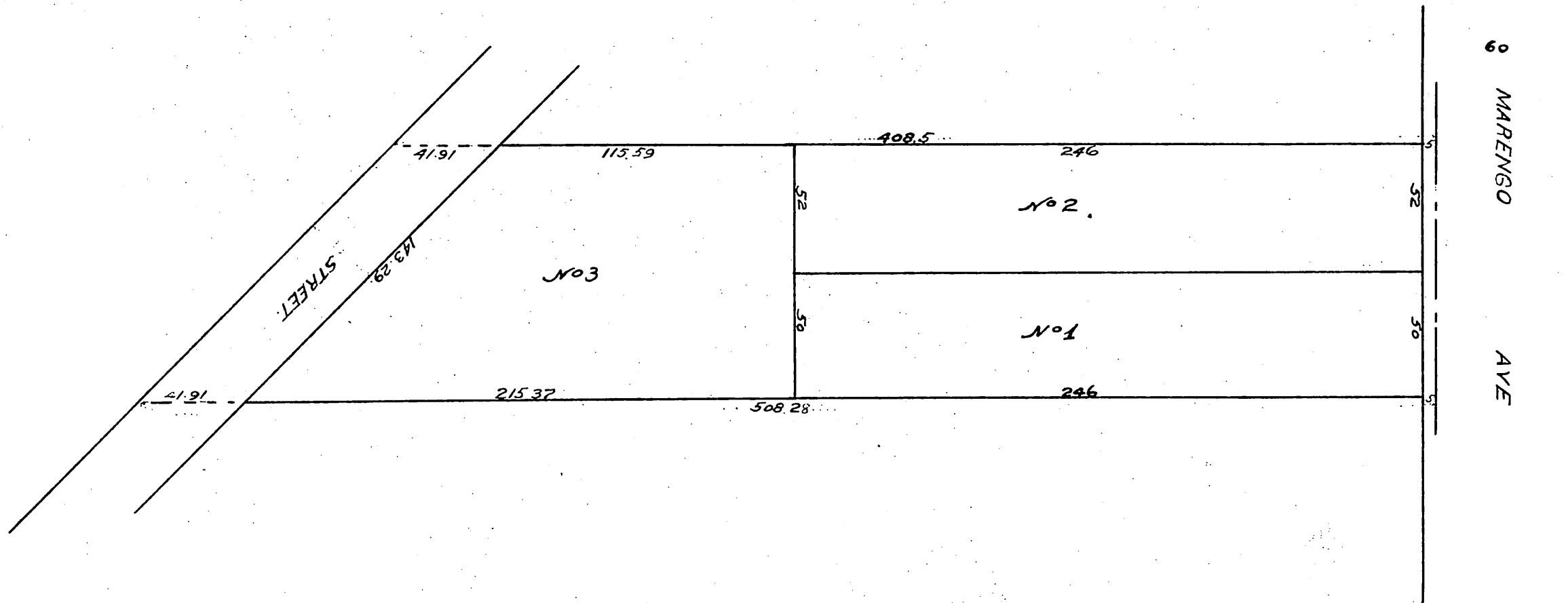


PLAT showing ROBERTS SUBDIVISION of LOT 1  
of the LEGGE TRACT  
Surveyed by T. Dallin May 1890



A full true and correct copy of the original  
Recorded Mar 4, 1891 at 11 min past 10 A M  
at request of C. T. Terry  
J. A. Kelly County Recorder  
By W. W. Mills Deputy

