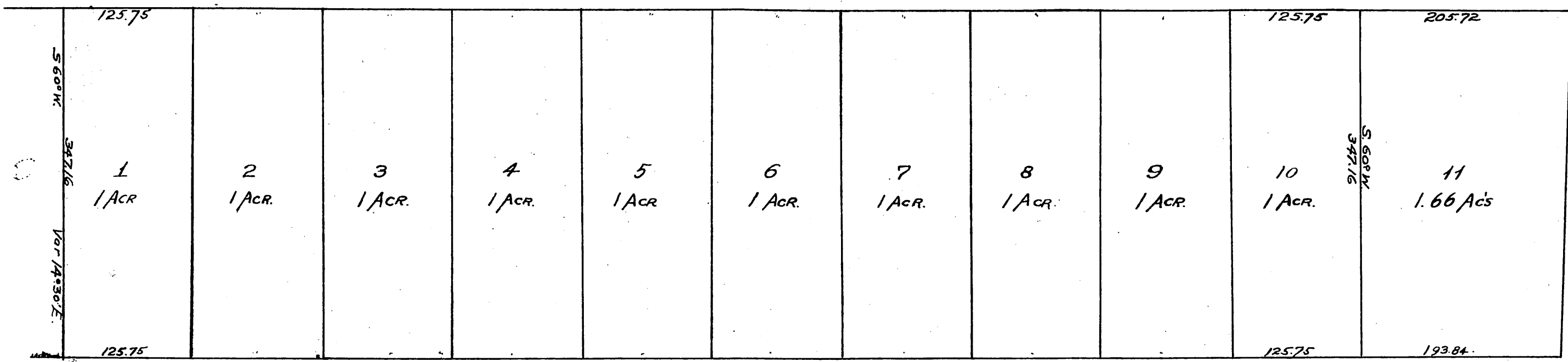


map  
of a Subdivision of  
Lots 9, 10 & 11, Range 7  
of the  
Alhambra Addition Tract  
L. A. Co. Cal.

Scale 100' = 1"  
Theo. G. Hoerberle, Surveyor



CHAPEL STREET

COUNTY ROAD

S.P.R.R.

A full true and correct copy of the Original.  
Recorded Mar. 9, 1891. at 16 min. past 3 P.M.  
at request of E. Kirchner.  
J. A. Kelly County Recorder  
By W. W. Mills Deputy