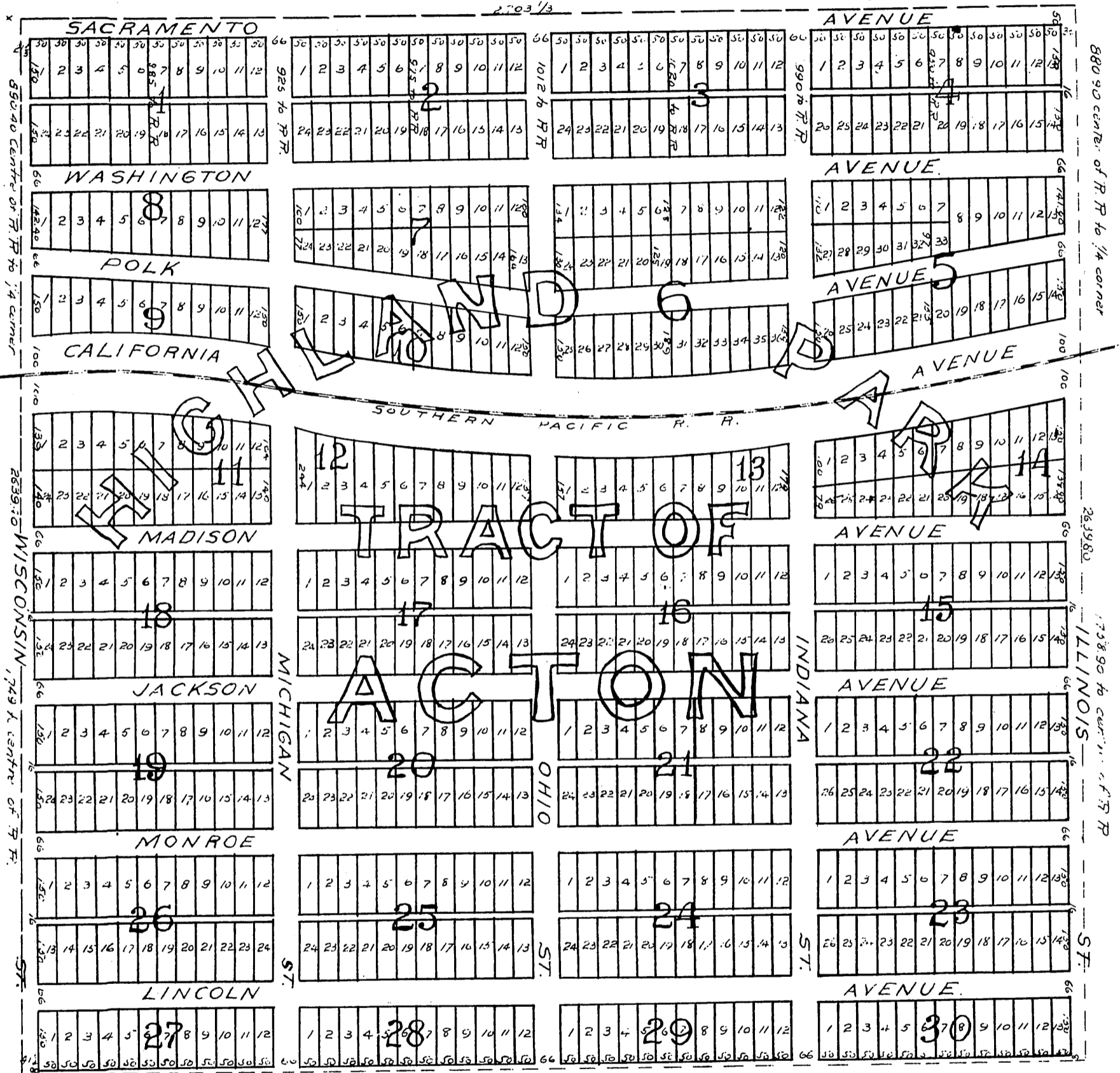


SUBDIVISION
OF THE
S. W. 1/4 Section 31, Town 5 N, R. 12 W.
Los Angeles County, California
(SAN BERNARDINO BASE & MERIDIAN)



I hereby dedicate the Streets and Alleys in the above Subdivision for the Public use forever.
Pauline M. Pfau.

I hereby certify that the above is a correct Subdivision of said quarter Section.
J. Louis Pfau, Jr.
M.E.

A full true and correct copy of the Original [reduced to the scale of 200 feet to one inch.] Recorded Mar. 5, 1891 at 20 min. past 10 A.M. at request of L. A. Abstract Co. J. A. Kelly, County Recorder. By W. W. Mills Deputy.