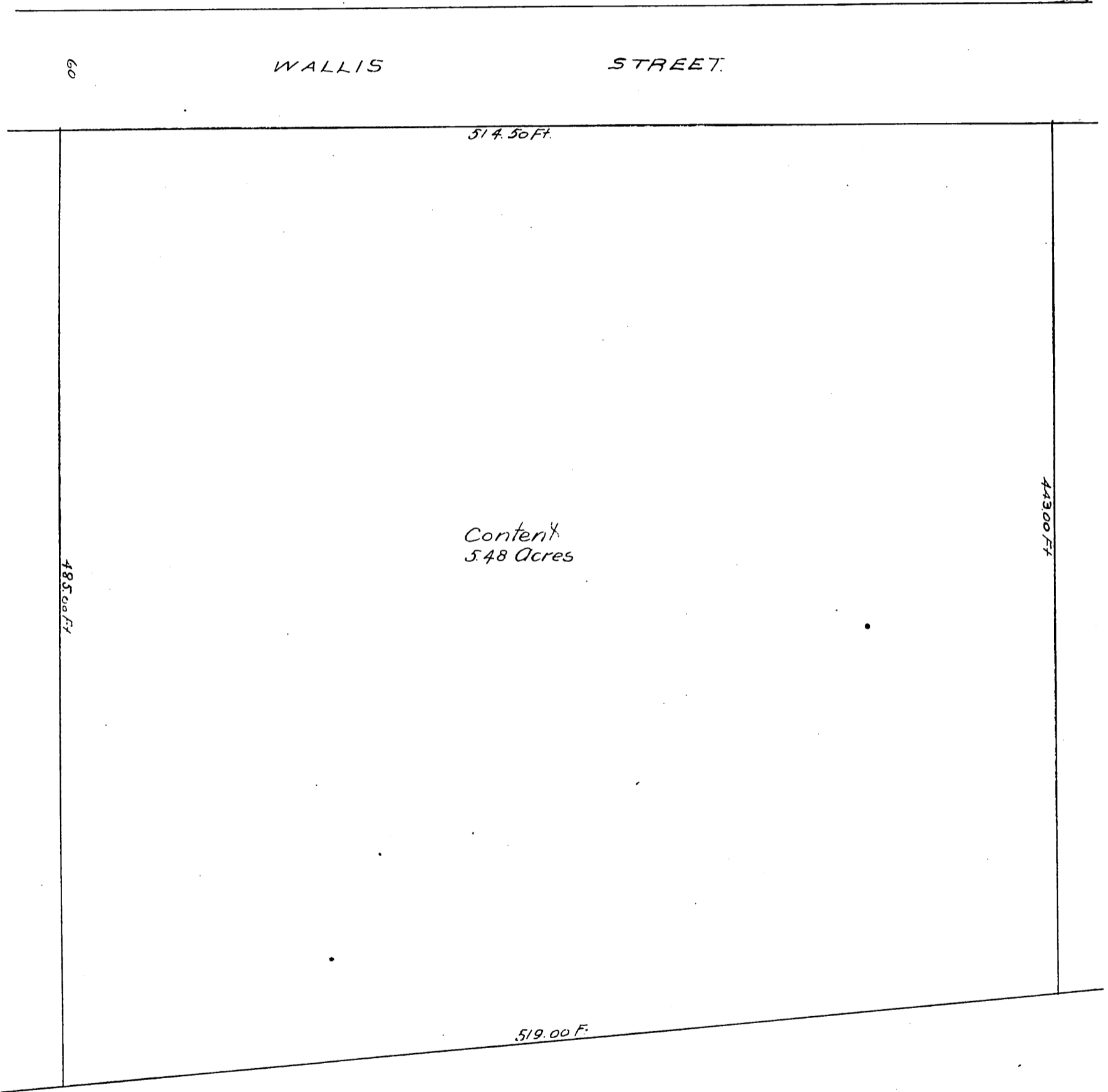


Plat of a portion of Lot 12 Block P
San Pasqual Tract; being a replat
of the East 1/2 of Block A and all of
Block B of C. W. Mc Kelveys Addition
to the Raymond Addition to Pasadena.



A full true and correct copy of the Original
Recorded Mar. 10, 1891 at 11 min past 4 P. M.
at request of Martha Ward.
J. C. Kelly County Recorder.
By W. W. Mills, Deputy.