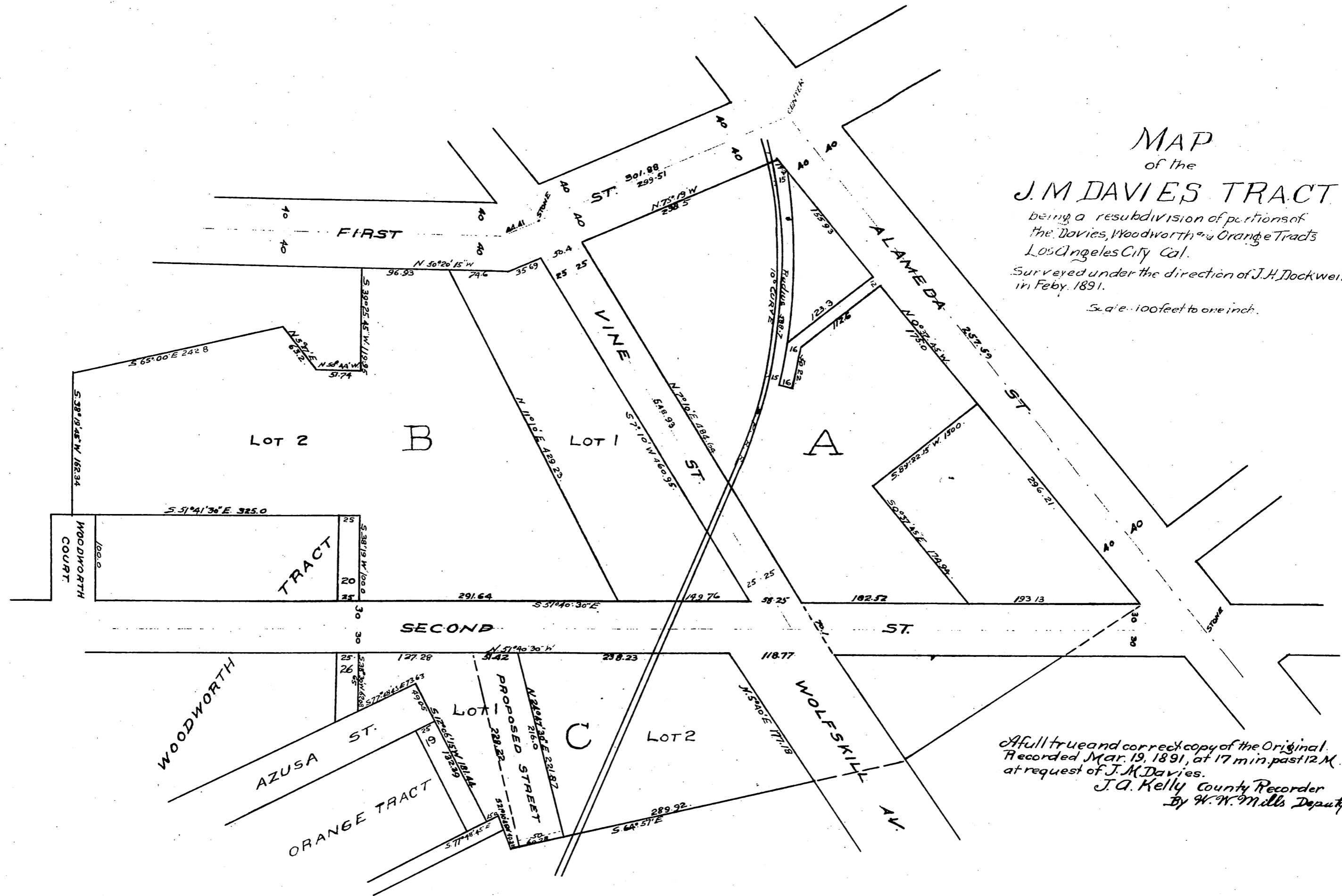


MAP of the J. M. DAVIES TRACT

being a resubdivision of portions of
the Davies, Woodworth & Orange Tracts
Los Angeles City Cal.

Surveyed under the direction of J. H. Dockweiler
in Feby. 1891.

Scale: 100 feet to one inch.



A full true and correct copy of the Original.
Recorded Mar. 19, 1891, at 17 min. past 12 M.
at request of J. M. Davies.
J. A. Kelly County Recorder
By W. W. Mills Deputy.