



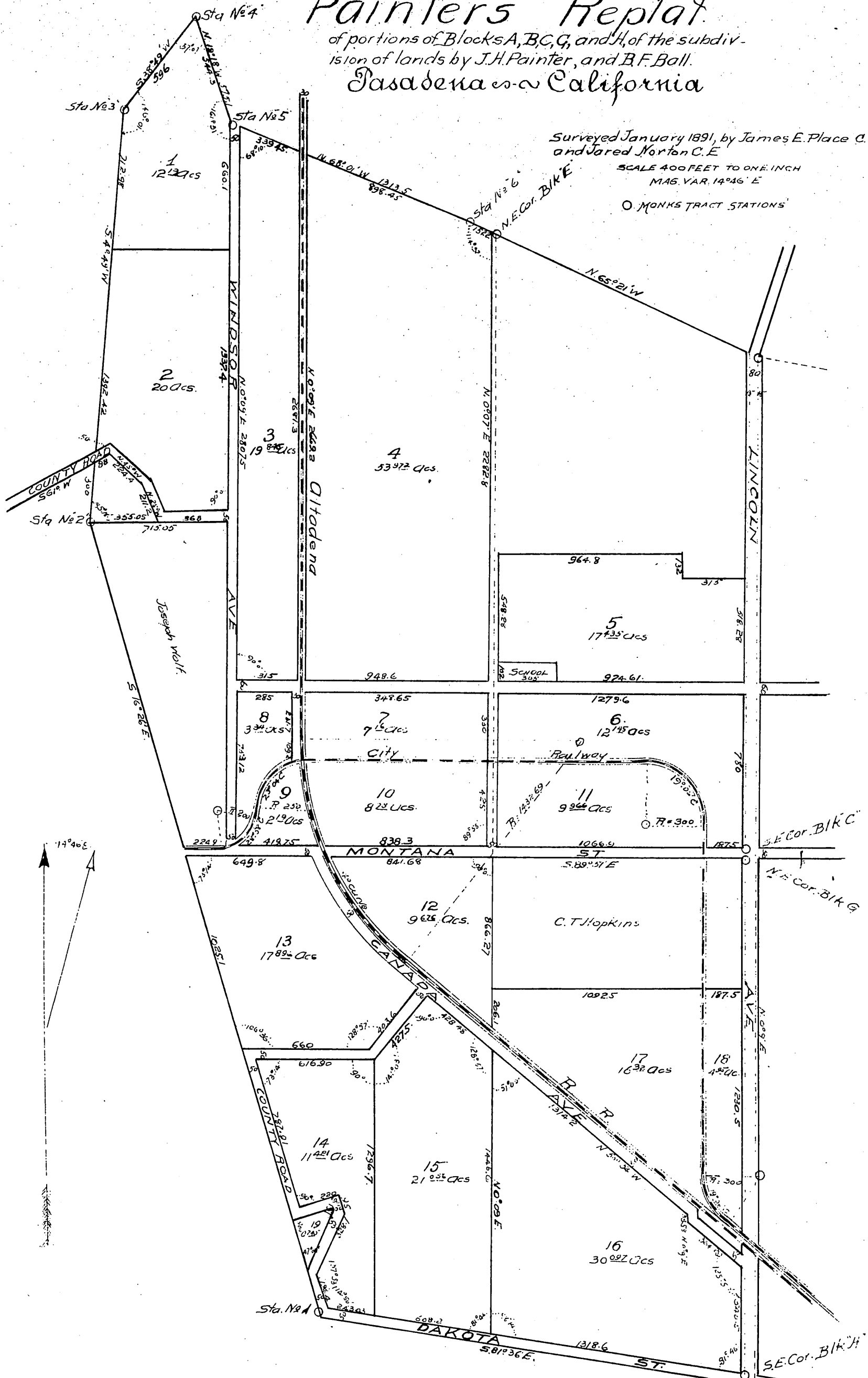
# Map OF

## Painter's Replat of portions of Blocks A, B, C, G, and H, of the subdiv- ision of lands by J.H. Painter, and B.F. Ball. Pasadena - California

Surveyed January 1891, by James E. Place C.E.  
and Jared Norton C.E.

SCALE 400 FEET TO ONE INCH  
MAG. VAR. 14° 46' E

O MONKS TRACT STATIONS



A full, true and correct copy of the Original  
(scale reduced to 500 feet to one inch) Recor-  
ded Mar. 25, 1891, at 20 min. past 9 AM. at re-  
quest of M.D. A. J. Painter.

J. A. Kelly County Recorder.  
By W. W. Mills, Deputy.

See Deeds, Book 736, Page 109;  
dedication of strips of land for  
"street purposes" recorded Jun.  
24, 1891, at request of M.D. Painter.  
J. A. Kelly Co. Recorder  
By W. W. Mills, Deputy.