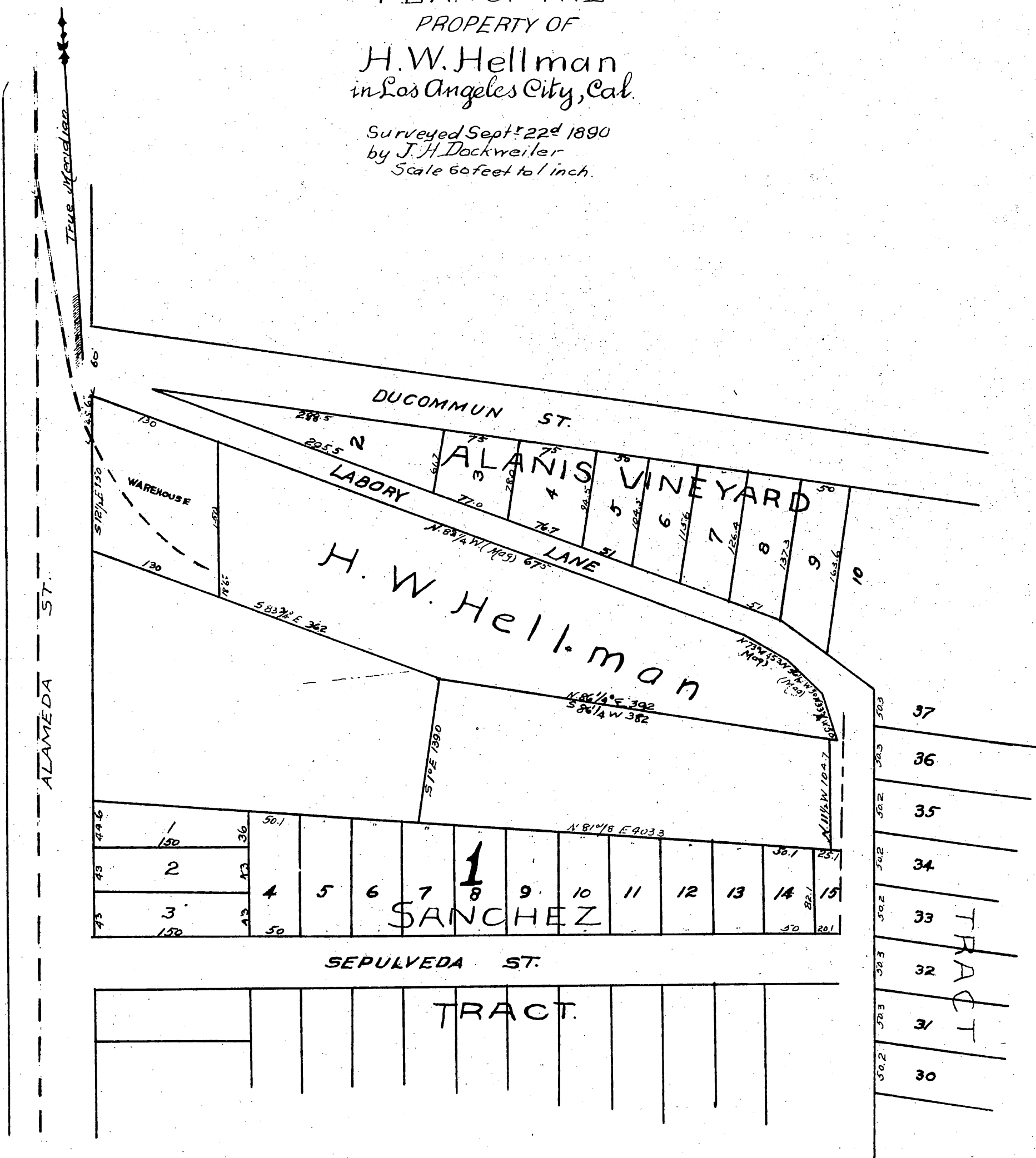


PLAN OF THE  
PROPERTY OF  
H. W. Hellman  
in Los Angeles City, Cal.

Surveyed Sept. 22<sup>d</sup> 1890  
by J. H. Dockweiler  
Scale 60 feet to 1 inch.



A full, true, and correct copy of the Original,  
(scale reduced to 100 feet to one inch), Recor-  
ded Mar 28 1891 at 33 min. past 11 A.M. at  
request of Abstract & Title Ins. Co.  
J. A. Kelly, County Recorder.  
By W. W. Mills, Deputy.