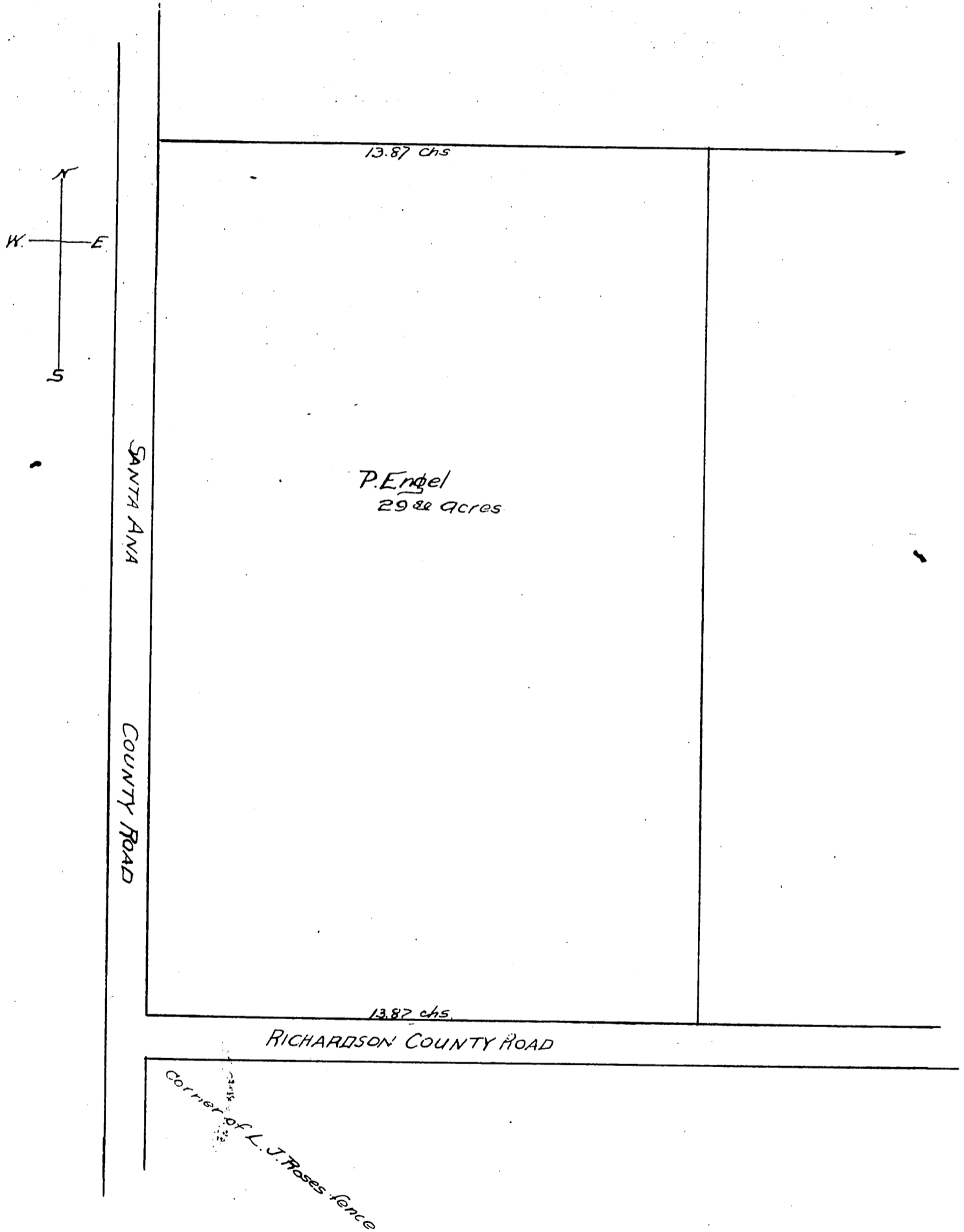


Map of a Resurvey of the Philip Engel Addition to Lamanda Park being a part of the Bonnestell Tract, in accordance with the Order passed by the Board of Super Visors of Los Angeles County, California, March 9th 1891, and recorded in Book 3 at page 435 minutes of the Board of Super Visors of said County.



A full, true and correct copy of the Original
Recorded Mar. 30 1891 at 18 min past 3 P.M.
at request of Philip Engel.
J. C. Kelly, County Recorder.
By W. W. Mills, Deputy.