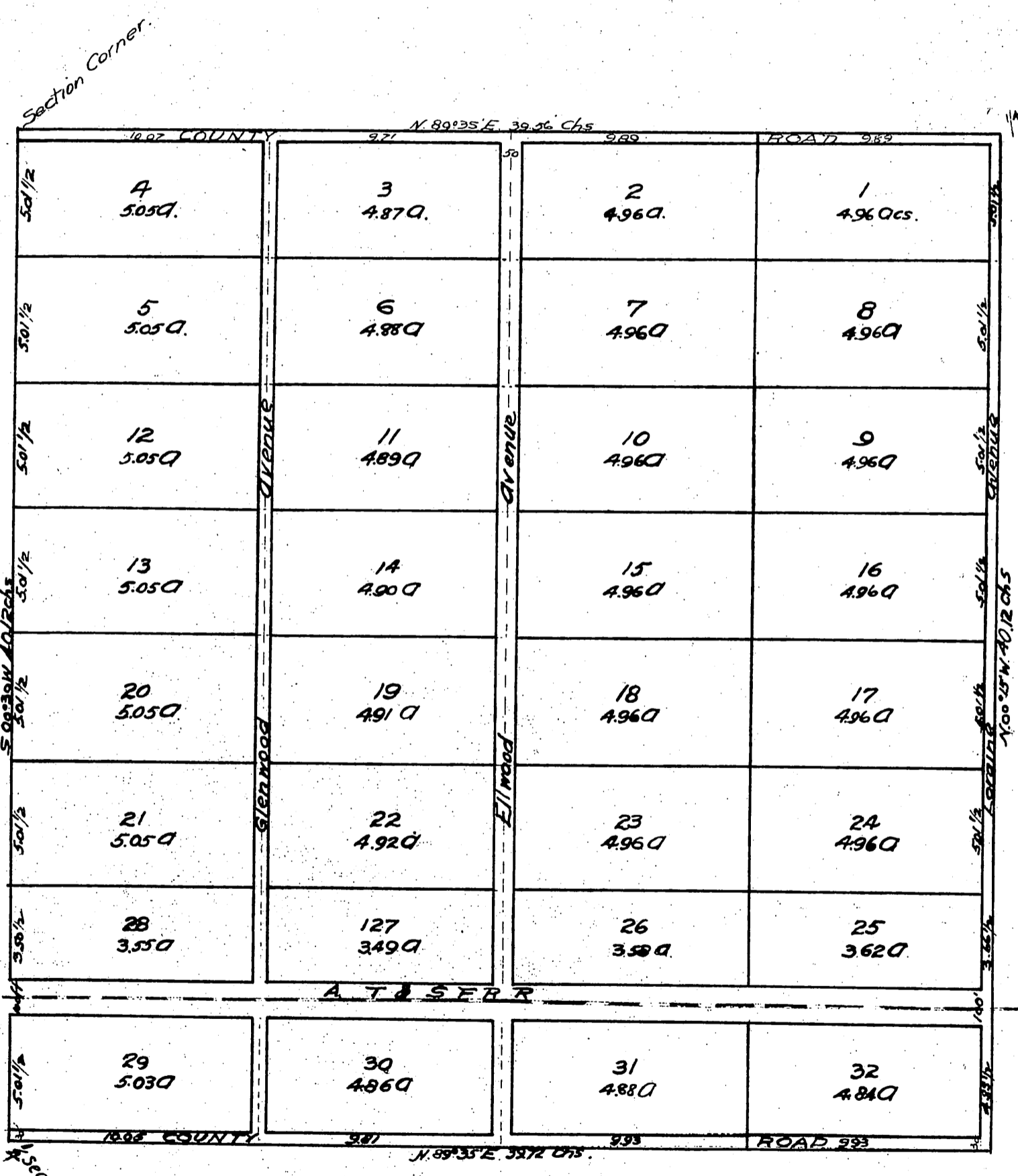


Map
OF
JAMES F. WASHBURN'S
Subdivision
of the N.W. 1/4 of Sec 32 T.1 N. R.9 W.5 B.M.
Surveyed in March 1891 by Harry
F. Stafford, County Surveyor
Scale 4 chs. to an inch
VAR. 14°30' E.



A full, true and correct copy of the Original
(scale reduced to 5 chains to an inch) recorded
Apr 4, 1891, at 54 min. past 1 p.m. at request
of James F. Washburn.
J.A. Kelly County Recorder.
By W.W. Mills Deputy.