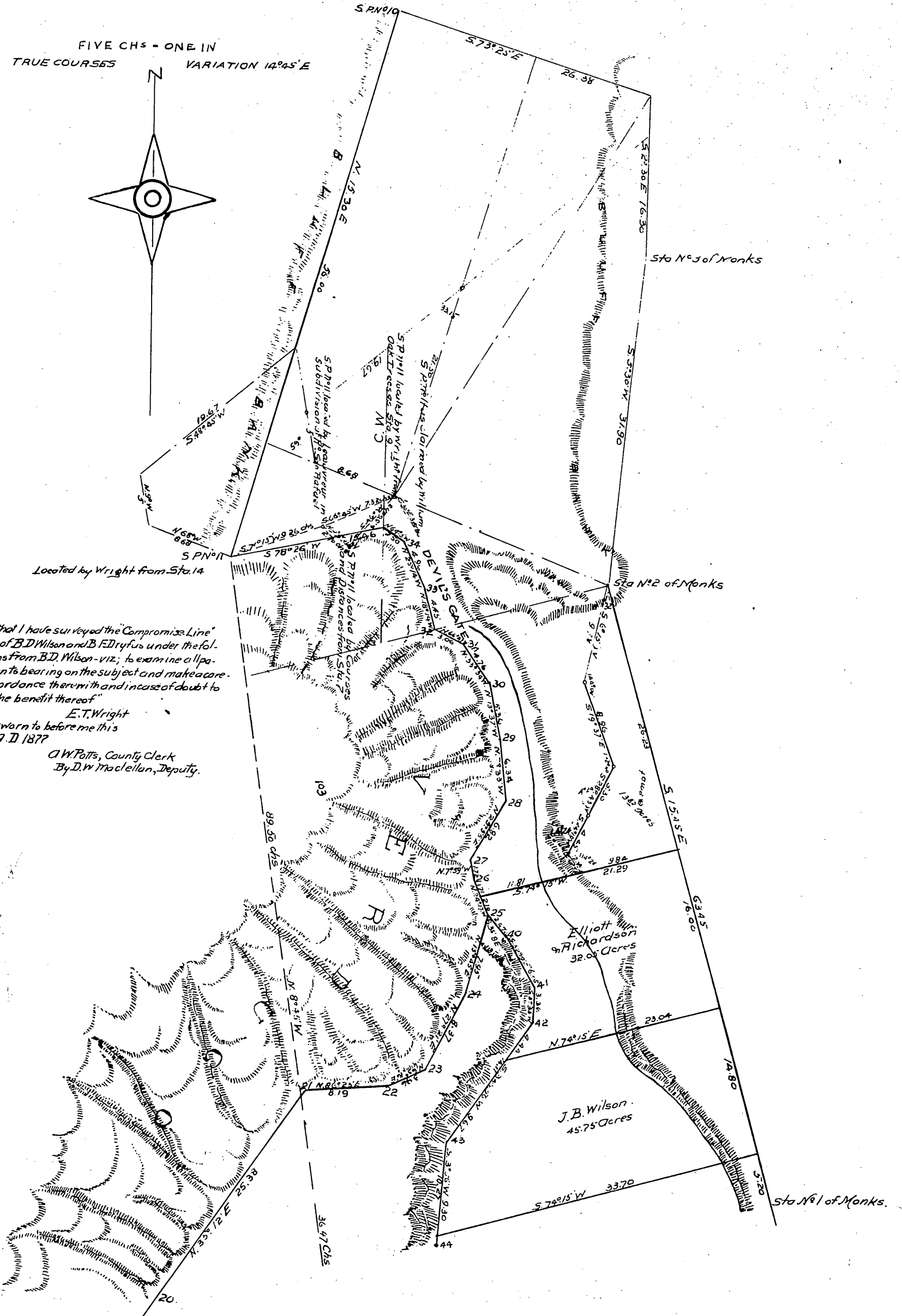
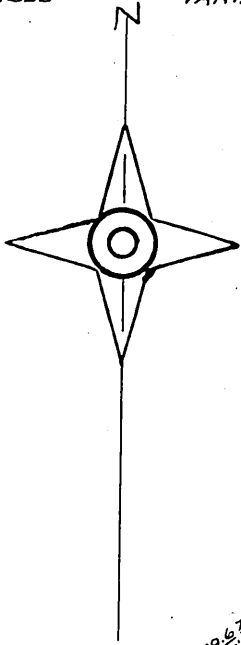




Plan OF A PART OF THE RANCHO SAN PASCUAL being the upper portion of the land of LAKE VINEYARD LAND AND WATER ASSOCIATION

Surveyed in March 1877
By E.T. Wright.

FIVE CHS - ONE IN
TRUE COURSES VARIATION 14°45' E



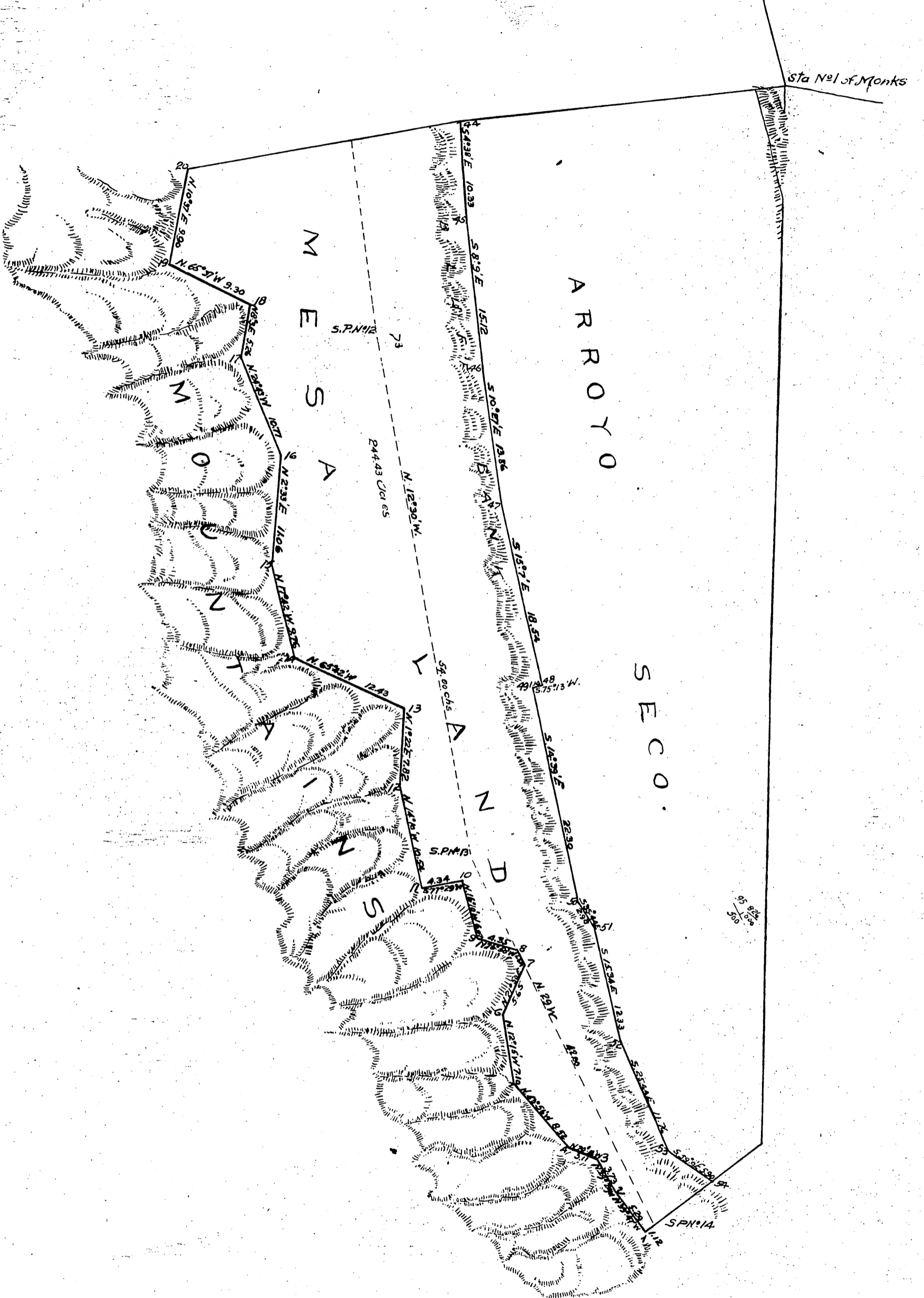
Located by Wright from Sta. 14

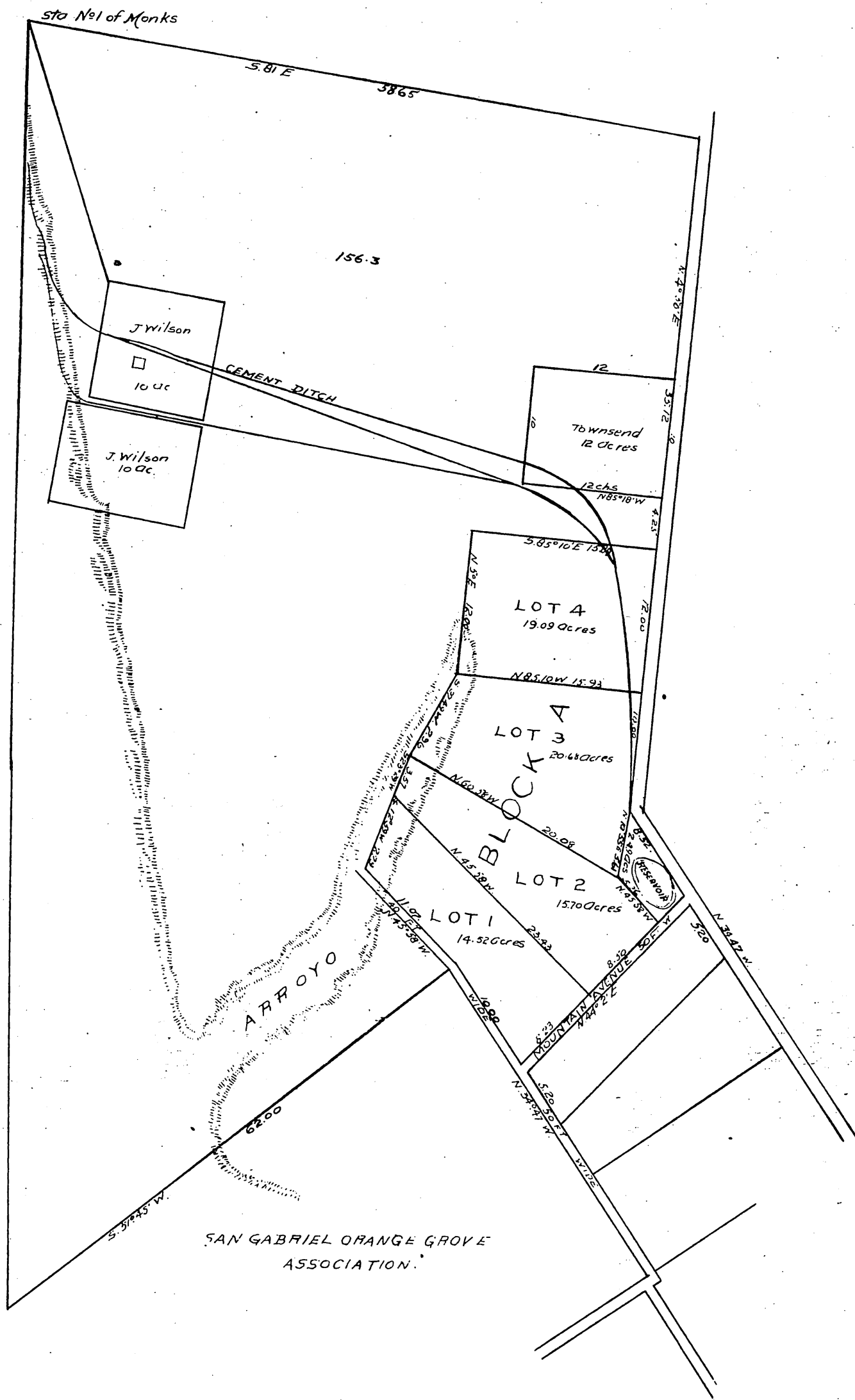
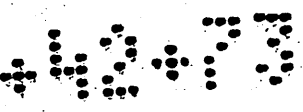
"I hereby certify that I have surveyed the 'Compromise Line' between the lands of B.D. Wilson and B.F. Dryfus under the following instructions from B.D. Wilson - viz; to examine all papers and documents bearing on the subject and make a careful survey in accordance therewith and in case of doubt to give B.F. Dryfus the benefit thereof"

E.T. Wright

Subscribed and sworn to before me this
23rd day of April A.D. 1877

A.W. Potts, County Clerk
By D.W. Maclellan, Deputy.





A full true and correct copy of the original
 (scale reduced to 10 chains to one inch; several
 additions on original; recorded in red)
 Recorded Apr. 16, 1891 at 37 min past 2 p.m.
 at request of Pasadena Lake Vineyard Land
 & Water Co.

J. O'Kelly, County Recorder.
 By G. W. Mills, Deputy.