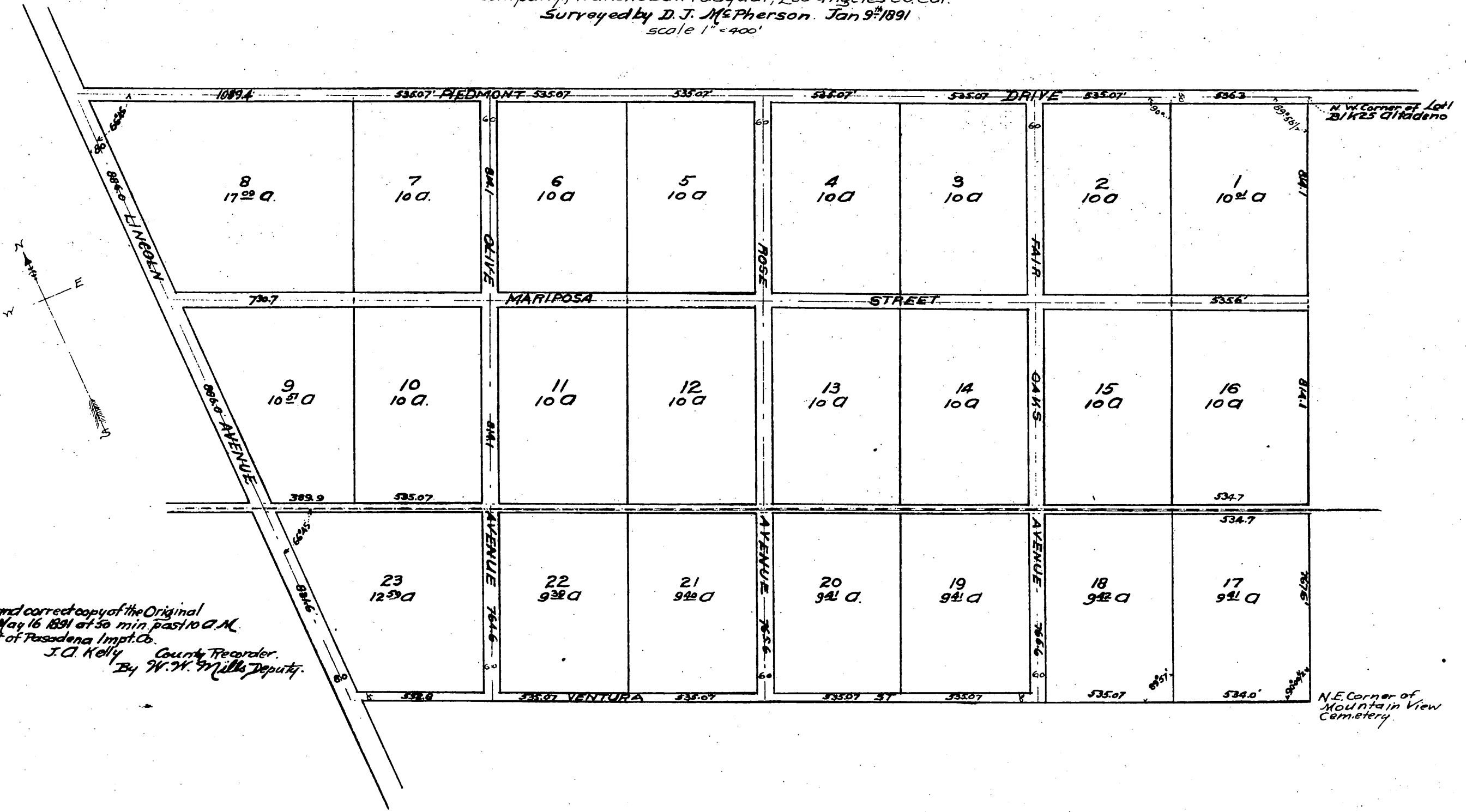


ALTADENA MAP NO 2

A Subdivision of the lands of The Pasadena Improvement Company, Rancho San Pasqual, Los Angeles Co. Cal.
 Surveyed by D. J. McPherson. Jan 9th 1891
 scale 1" = 400'



A full true and correct copy of the Original
 Recorded May 16 1891 at 50 min past 10 A.M.
 at request of Pasadena Imp't. Co.
 J. C. Kelly County Recorder.
 By W. W. Mills Deputy.

