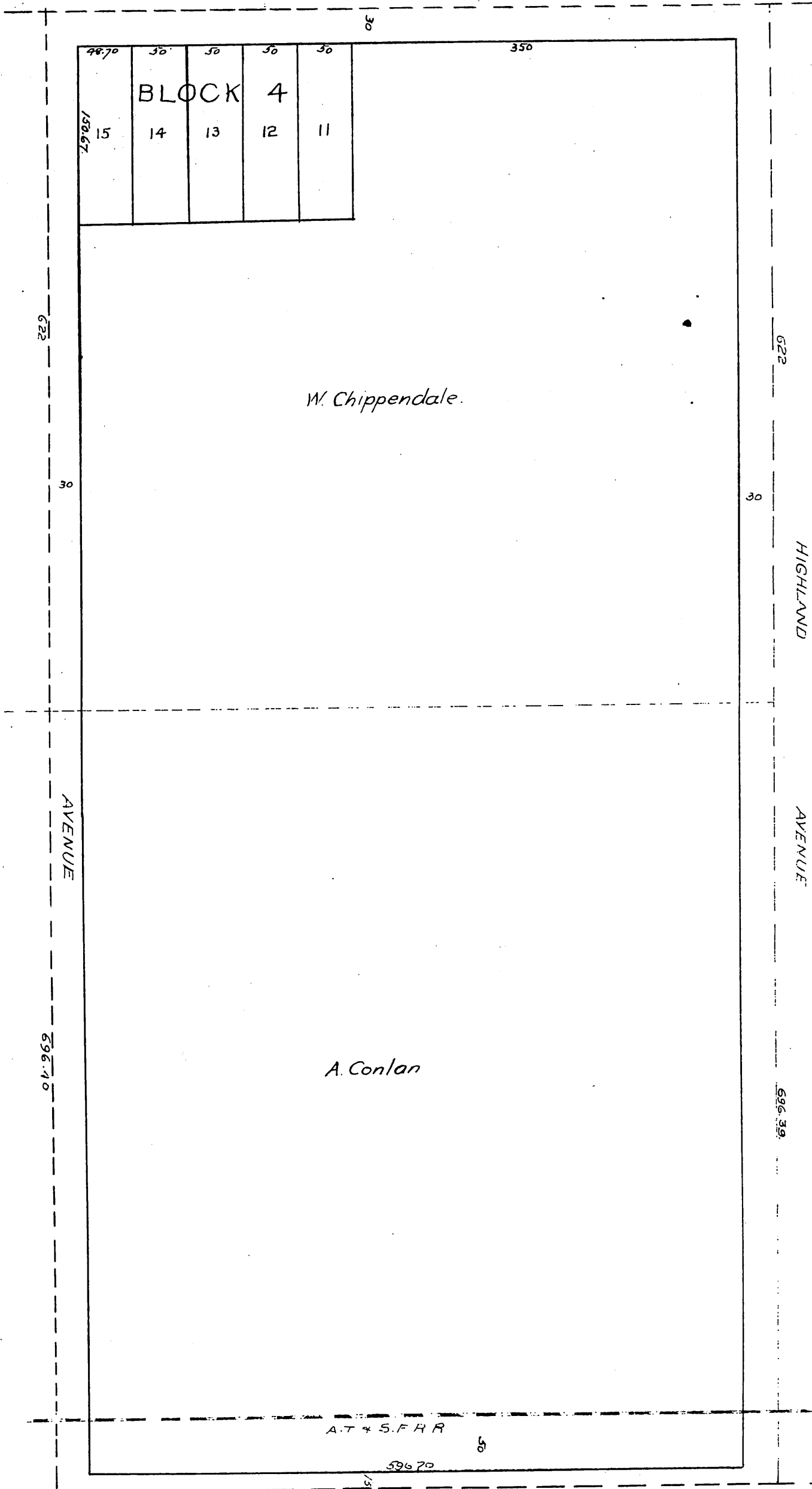


BLANKENHORN AND CHIPPENDALE SUBDIVISION OF QUARTE

being Lot 2 Sec 10 T. 1 N. R. 10 W. S. B. M.
Streets closed by Order of Supervisors made April 27th 1891
scale 1 inch to 100 feet.

CENTRAL AVENUE



W. Chippendale.

A. Conlan

A.T. & S.F.R.R.

SAN GABRIEL AVENUE

A full true and correct copy of the Original
Recorded May 25 1891 at 47 min past 12 M.
at request of Andrew Conlan
J. C. Kelly County Recorder
By W. H. Miles Deputy