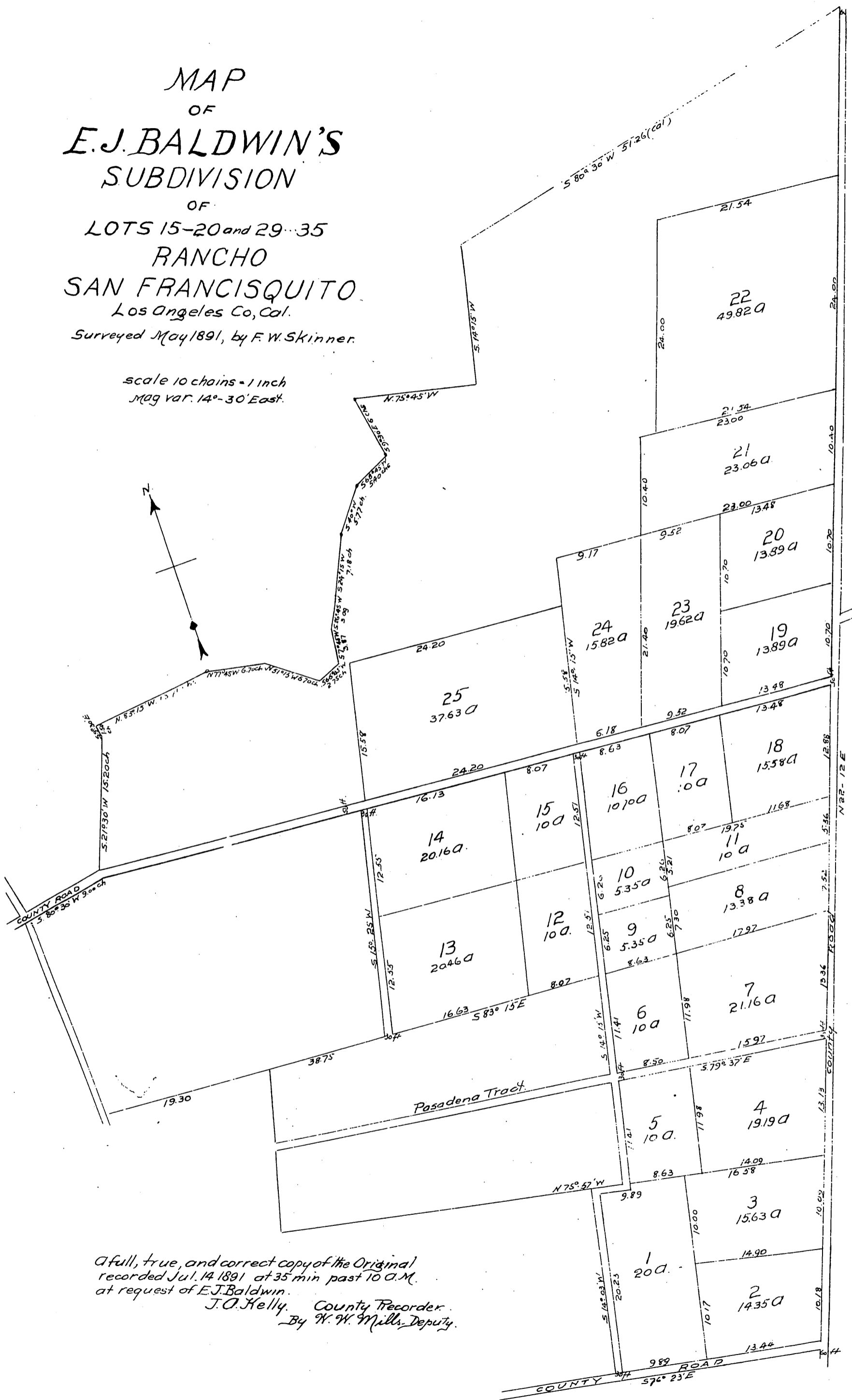


MAP  
 OF  
**E. J. BALDWIN'S**  
 SUBDIVISION  
 OF  
 LOTS 15-20 and 29-35  
 RANCHO  
**SAN FRANCISQUITO**  
 Los Angeles Co., Cal.  
 Surveyed May 1891, by F. W. Skinner.

scale 10 chains = 1 inch  
 mag var. 14°-30' East.



A full, true, and correct copy of the Original  
 recorded Jul. 14 1891 at 35 min past 10 A.M.  
 at request of E.J. Baldwin.  
 J. O. Kelly, County Recorder.  
 By W. W. Mills, Deputy.