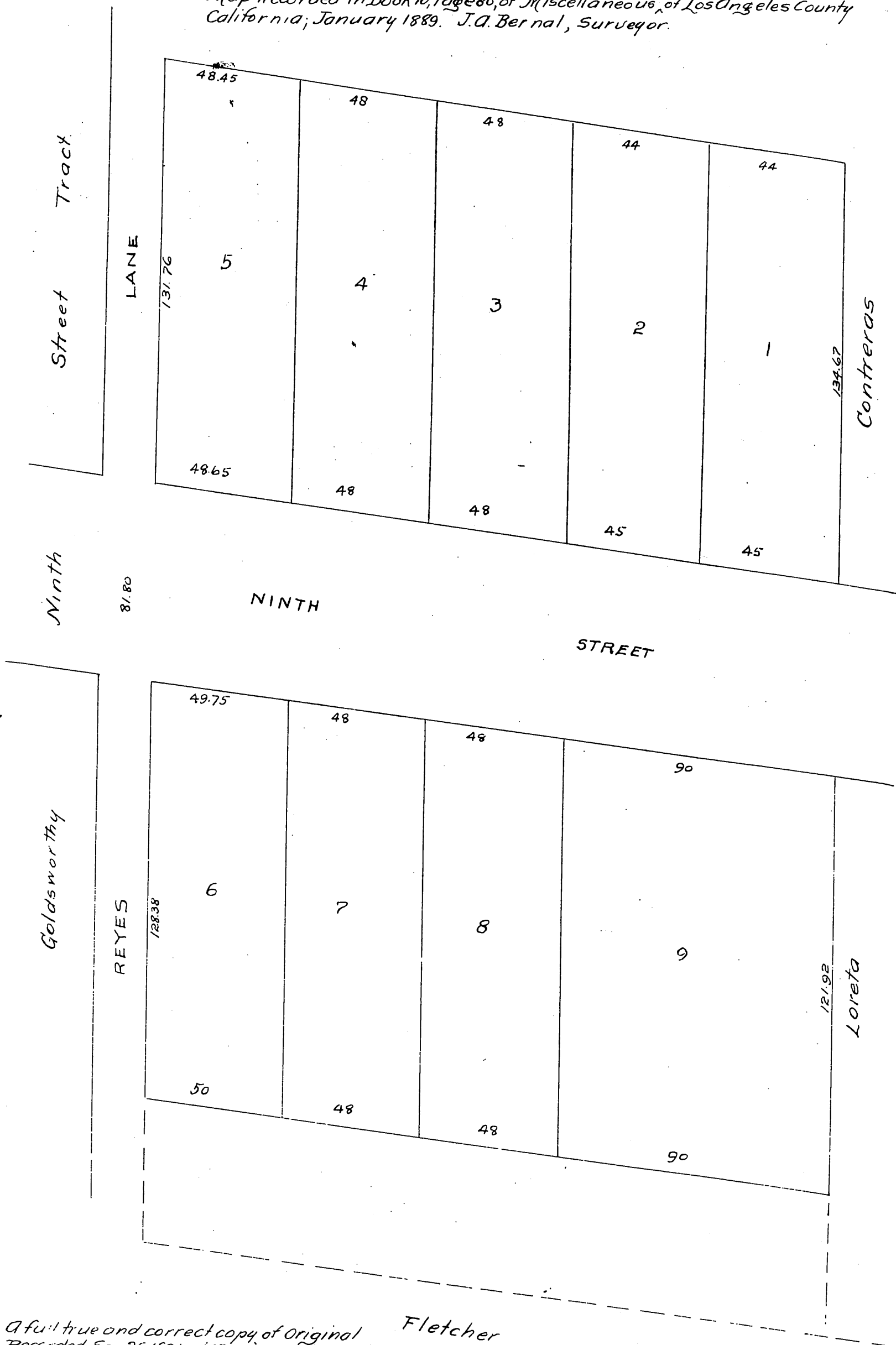


Map of John H. Jacob's Subdivision

of Lots 9 and 13 and portion of Lots 10 and 12 of the Reyes Tract, as per Map Recorded in Book 10, Page 80, of Miscellaneous ^{Records} of Los Angeles County California; January 1889. J.A. Bernal, Surveyor.



A full true and correct copy of Original Fletcher
 Recorded Sep 25 1891 at 45 min. past 10 A.M.
 at request of John H. Jacobs.
 J. A. Kelly County Recorder.
 By W. W. Mills, Deputy.