

Southern District Agricultural Park

SANTA BARBARA STREET

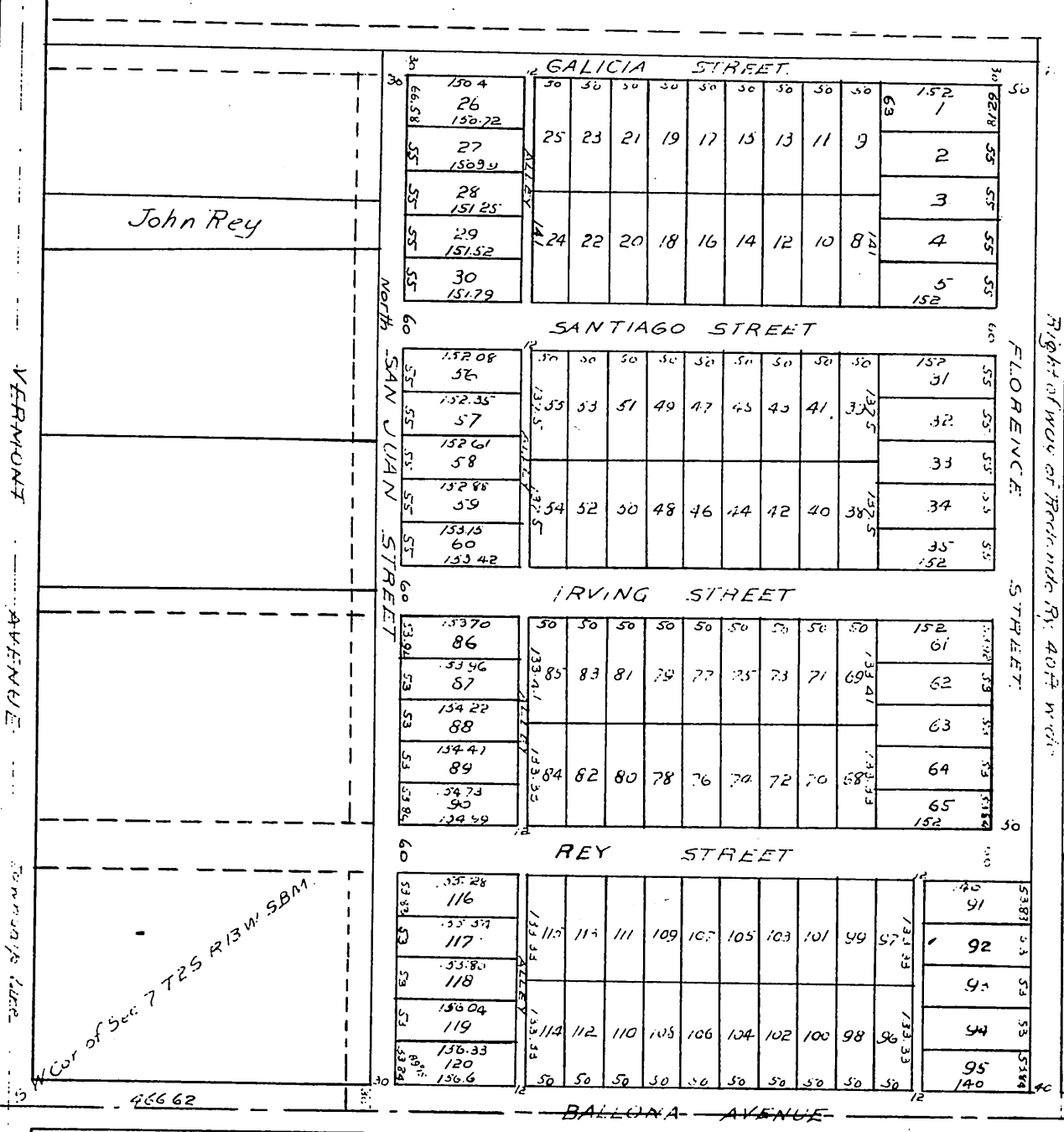
# RE-PLAT

OF

## JOHN REY'S SUBDIVISION

Situated in the S.W. 1/4 of Section 7, T25, R13W  
S.B.M. Los Angeles County California Record-  
ded in Book 17, Page 6, Misc. Records of Los Ang-  
eles Co

scale 100 feet to an inch



A full true and correct copy of Original  
(scale reduced to 200 feet to an inch)  
Recorded Jul 21 1891, at 9 min past 2.20 m.  
in request of Sheldon Borden  
J. O. Kelly, County Recorder.  
By W. W. Myers Deputy.