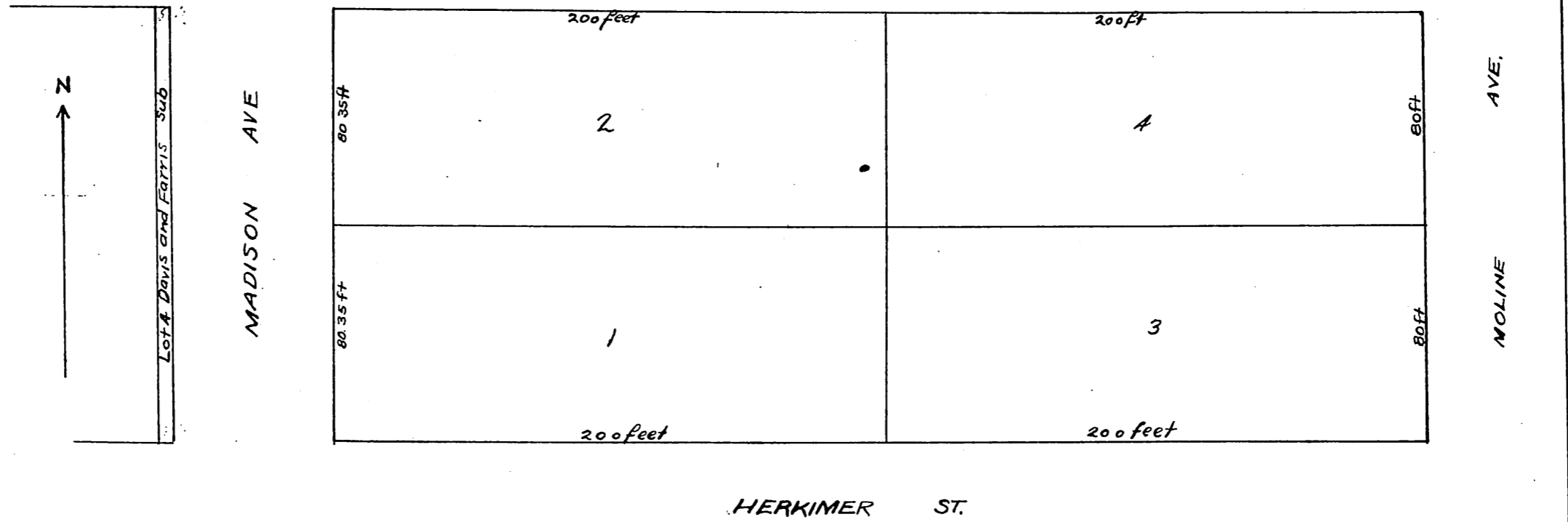


FARRIS AND CRISTY'S REPLAT

of Lots 4, 5, 6, 7, 8 and 9 of Davis and Farris Sub-
division of the 1/2 of Lot 10 Block D S P. Tract
Pasadena Cal.
Surveyed by J. W. Sedwick Sept 1891.



A full true and correct copy of original
Recorded Sep 18. 1891 at 32 min. past 3 P.M.
at request of E. L. Farris and C. S. Cristy
J. A. Kelly County Recorder
By W. W. Mills. Deputy.

