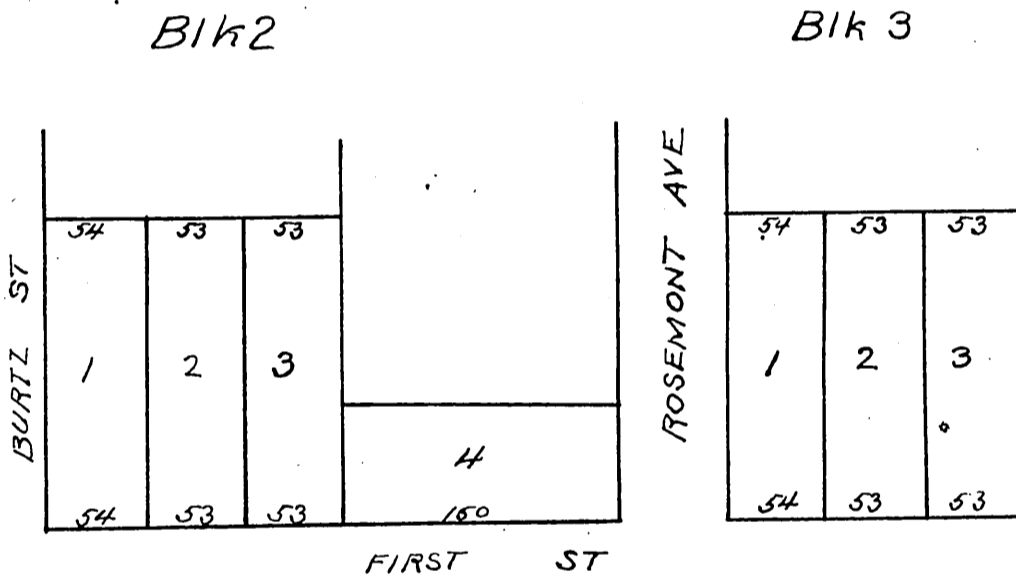


Map of J.S. MALTMAN'S Resubdivision
of lots 9, 10, 11 and 12 in Block 2 and lots 22, 23
and 24 in Block 3 of The Rosemont Tract
as per map recorded in Book 15 Page 78 mis-
cellaneous Records of L. A. Co. Cal including
a narrow strip of land lying between said
tract and First Street



A full, true and correct copy of original
recorded Oct 1 1891 at 44 min past 2 p.m.
at request of J.S. Maltman
J. A. Kelly County Recorder
By W. W. Mills Deputy