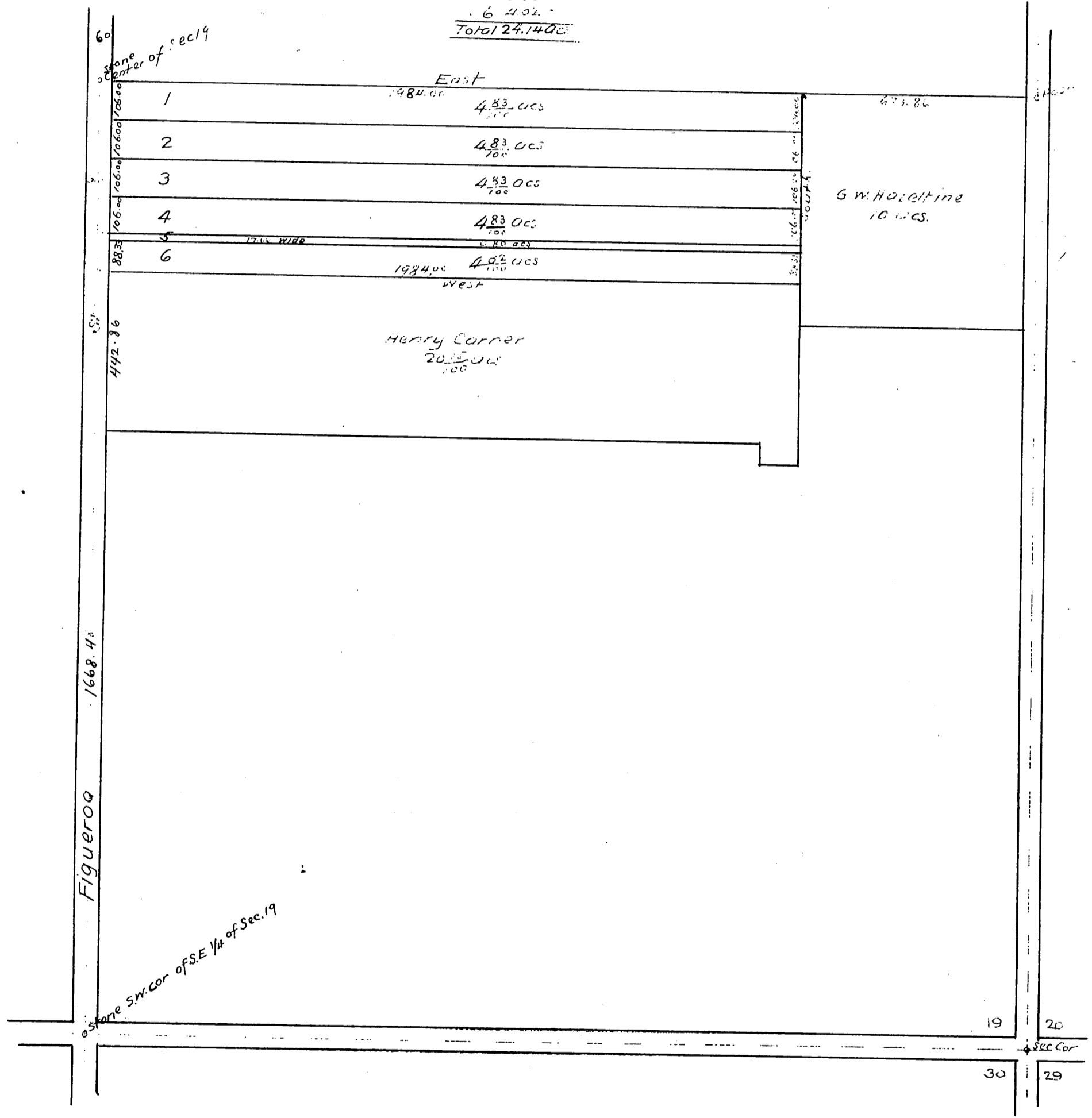


PLAT OF
 Re Subdivision of Portion of Sec 19, (SE 1/4 Sec)
 T.2S., R 13W. S.B.M
 Surveyed by L. Friel, Octbr. 1891
 Scale 300ft to one inch

Note: Distances & Areas to Center of Streets

Lot 1	483 acs
2	483
3	483
4	483
5	080
6	402
Total	2414 acs



A full, true and correct copy of original
 recorded Oct 21 1891 at 21 min past 3 pm
 at request of Robt. N. Bulla
 J. A. Kelly County Recorder
 By W. W. Mills Deputy