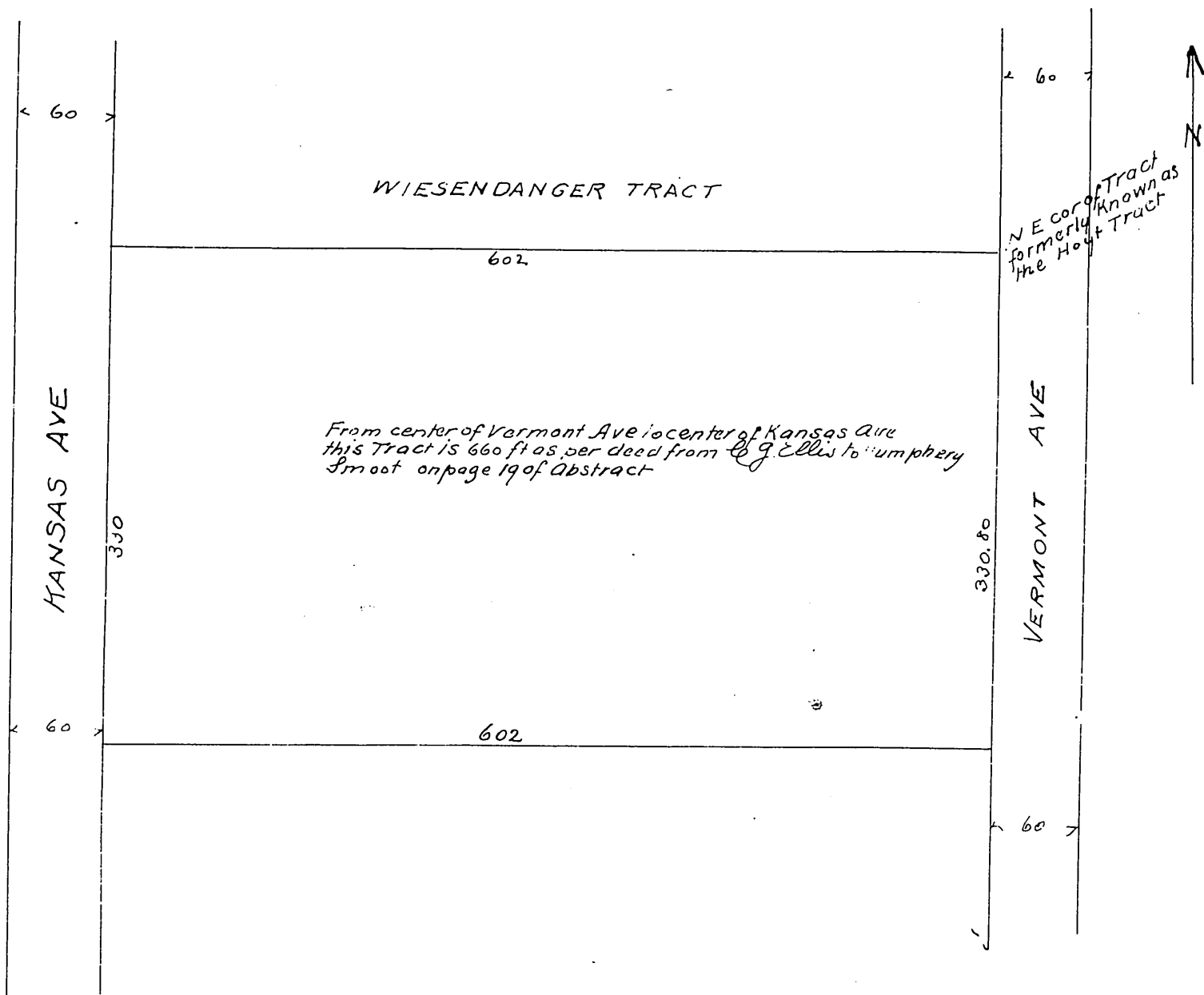




Map of a replat of the  
 Hoyt Tract  
 being a subdivision of the S 1/2 of the  
 N.E. 1/4 of the SE 1/4 of the N.E. 1/4 of Section 1  
 Twp 2 S. R. 14 W. S. B.M

SCALE 100 FT TO ONE INCH



A full, true, and correct copy of original,  
 recorded Oct 31 1891, at 57 min past 12 m  
 at request of O. Bauer  
 J. A. Kelly County Recorder  
 By W. W. Mills Deputy.