

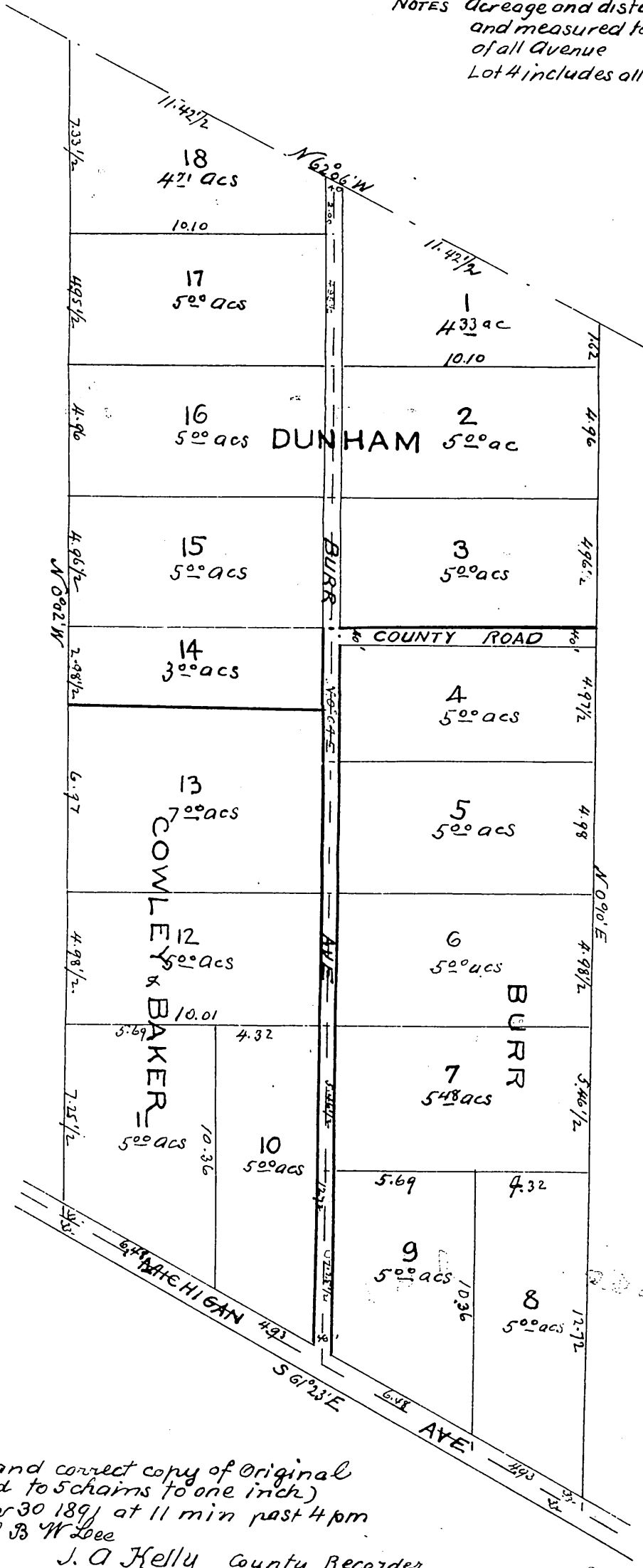
DUNHAM'S SUBDIVISION

of Lot 17 of the R. La Cañada

Surveyed July 1891, by Harry F. Stafford

Scale 3 CHS = 1-INCH

NOTES: Acreage and distances calculated and measured to the centre line of all Avenue
Lot 4 includes all of County Road



A full true and correct copy of original
(scale reduced to 5 chains to one inch)
recorded Nov 30 1891 at 11 min past 4 pm
at request of B. W. Lee

J. A. Kelly County Recorder
By W. W. Mill's Deputy