

#4321

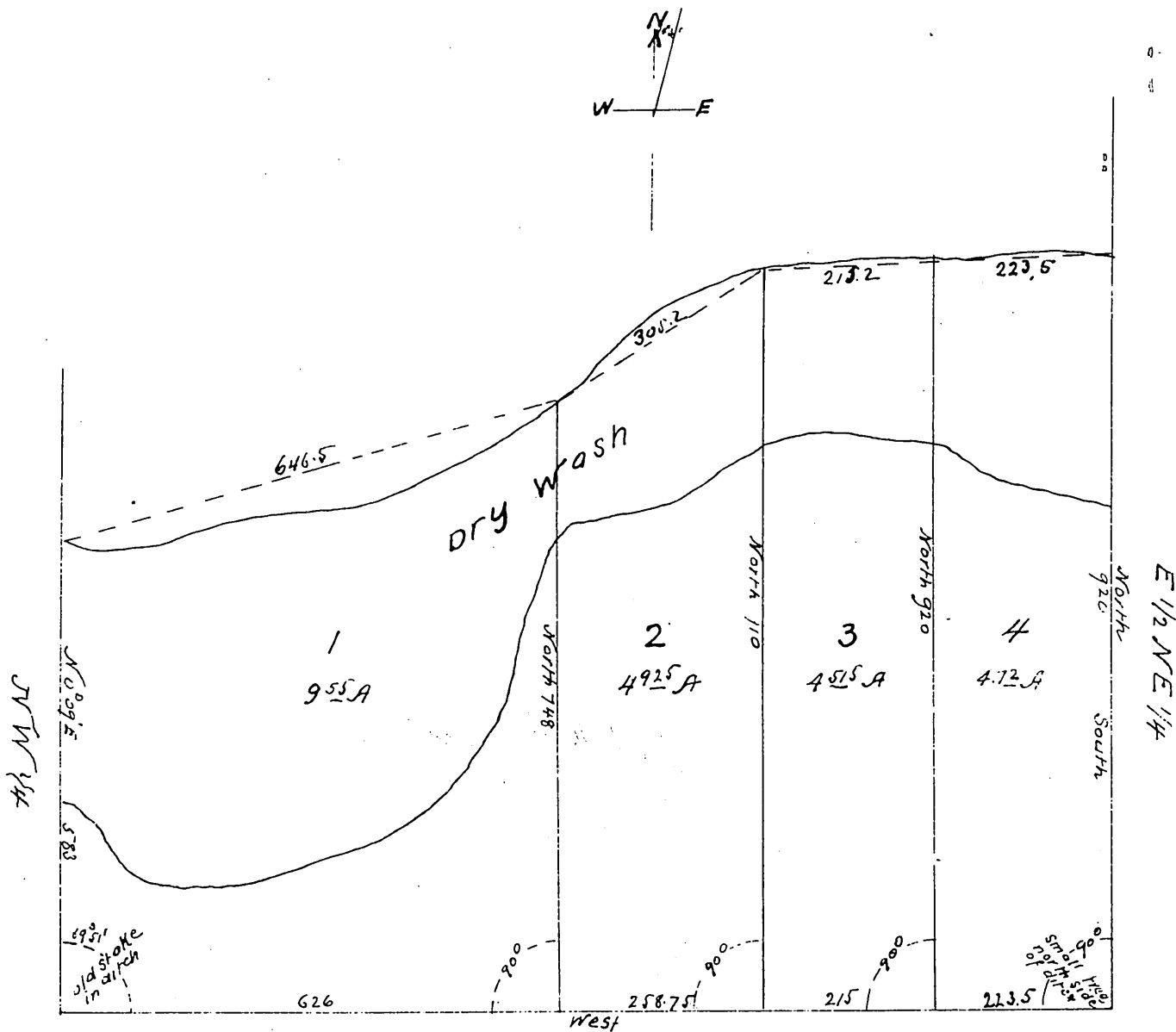
MAP OF LUCY BOHANNAN'S subdivision

of the South 23 1/2 Acres of the W 1/2
NE 1/4 Sec 11 T. 15 R. 10 W. S. B. M.

Scale 100 Feet to one inch

Oct 1891

J. Norton Surveyor
Var 14° 30' E



A full true and correct copy of original
 (scale reduced to 200 feet to one inch) recorded
 Dec 3 1891, at 29 min past 1 p.m., at request
 of Lucy Bohannan
 J. A Kelly County Recorder
 By W. W. Mills Deputy