

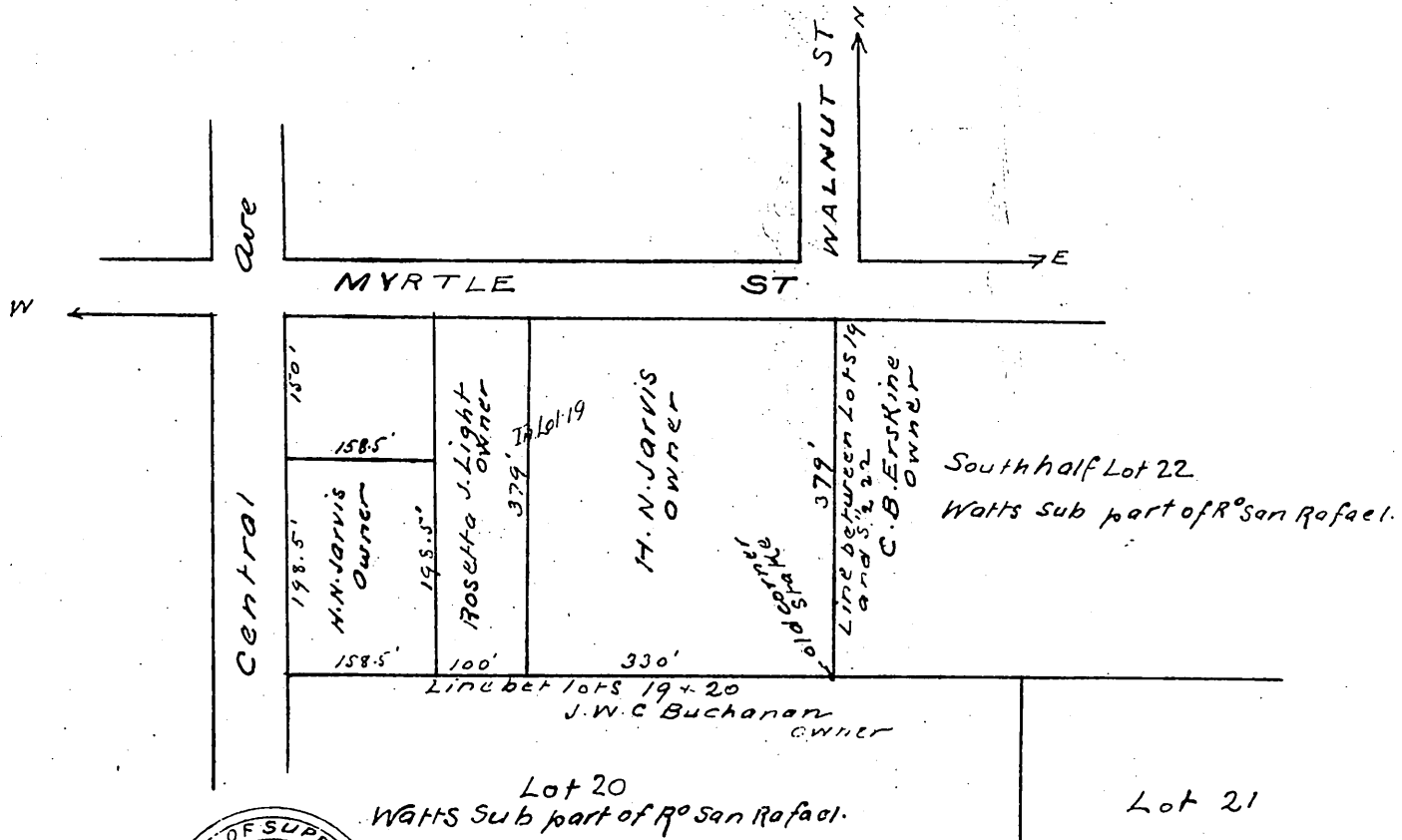
In the Board of Supervisors of the County of Los Angeles State of California  
 In the Matter of Vacating Laurel Street and  
 Part of Walnut Street of the Vine Cottage } Order Vacating Streets  
 Tract, Rancho San Rafael

Now at this day the petition in the above entitled matter coming on regularly to be heard and the Board having seen and heard all and singular the papers and proofs herein and it appearing to the Board that the Streets marked and shown on the map of the Vine Cottage Tract, being the Subdivision made by H. N. Jarvis of Lot 19 of Watts Subdivision of part of Rancho San Rafael, recorded in Book 23 page 6 of the Miscellaneous Records of the Office of the Recorder of Los Angeles County, and lying along the line between Lots 19 and 20 and between Lots 19 and the South half of Lots 22 of said Subdivision and named in said plat or map as Laurel and Walnut Streets have not been and are not now opened and used as public streets or roadways, and are not necessary for public use or travel.

It is therefore ordered by the Board that the said Streets marked and shown on the said map as laid out on the land along the lines between Lots 19 and 20 and Lot 19 and the South half of Lot 22 of Watts Subdivision of part of Rancho San Rafael be and the same are hereby discontinued and declared vacated as Streets or roadways for public use and travel. It is further ordered that a map of the said land showing the lines of the said Lots upon the vacation of the said streets, together with a copy of this order be filed and recorded in the office of the Recorder of Los Angeles County

I hereby Certify the foregoing to be a full and correct copy of an order passed and adopted by the Board of Supervisors of Los Angeles County Cal at a regular meeting held on Oct 13<sup>th</sup> 1891  
 T. H. Ward Clerk  
 By Henry S Knapp Deputy.

Map  
 showing Lines of Lots between Lots 19 and 20 and between Lot 19 and the South Half of Lot 22 of Watts Subdivision, Part of Rancho San Rafael Upon Vacation of Streets of Vine Cottage Tract located thereon



A full, true and correct copy of original recorded at DEC 4. 1891 at 36 min. past 9 a.m. at request of H. N. Jarvis  
 J. A. Kelley County Recorder  
 by W. W. Mills Deputy