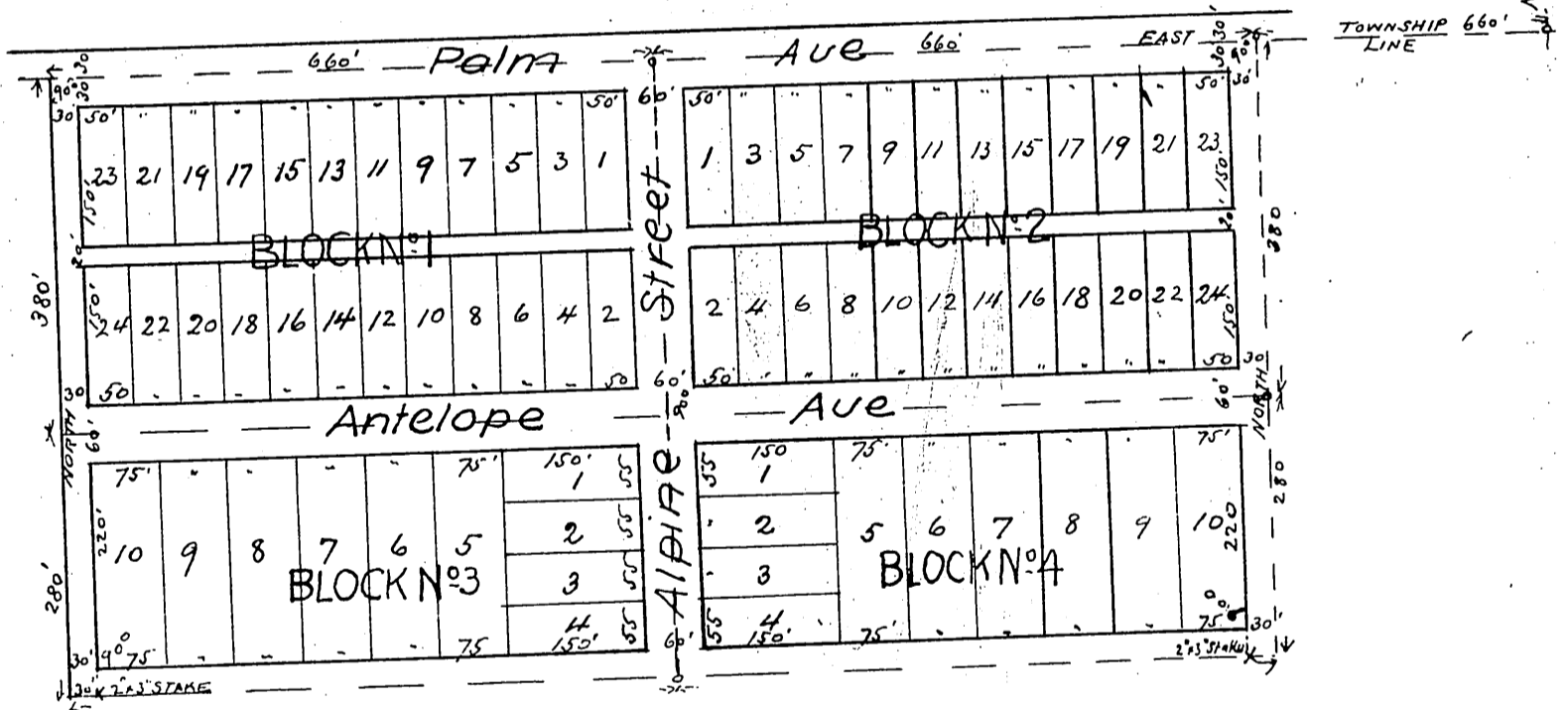


MAP OF THE TOWN OF LITTLE ROCK

Being a Subdivision of
N.E. 1/4 of NE 1/4 of NW 1/4 of NE 1/4 and the NW 1/4
of NW 1/4 of NE 1/4 of NE 1/4 Sec 6 T5N-R10W-SBM.
Surveyed in Dec 1891 by E Lowrie C.E.

SCALE 100 FT = 1 IN

N.E. COR SEC 6 T. 5N R. 10W S. 10M



A full true and correct copy of original
(scale reduced to 200 feet to one inch) recorded
Dec 12. 1891 at 59 min past 11 am at re-
quest of Nathan Cole Jr
J. A Kelly County Recorder
By W. W. Mills Deputy

See corrected map Page 90