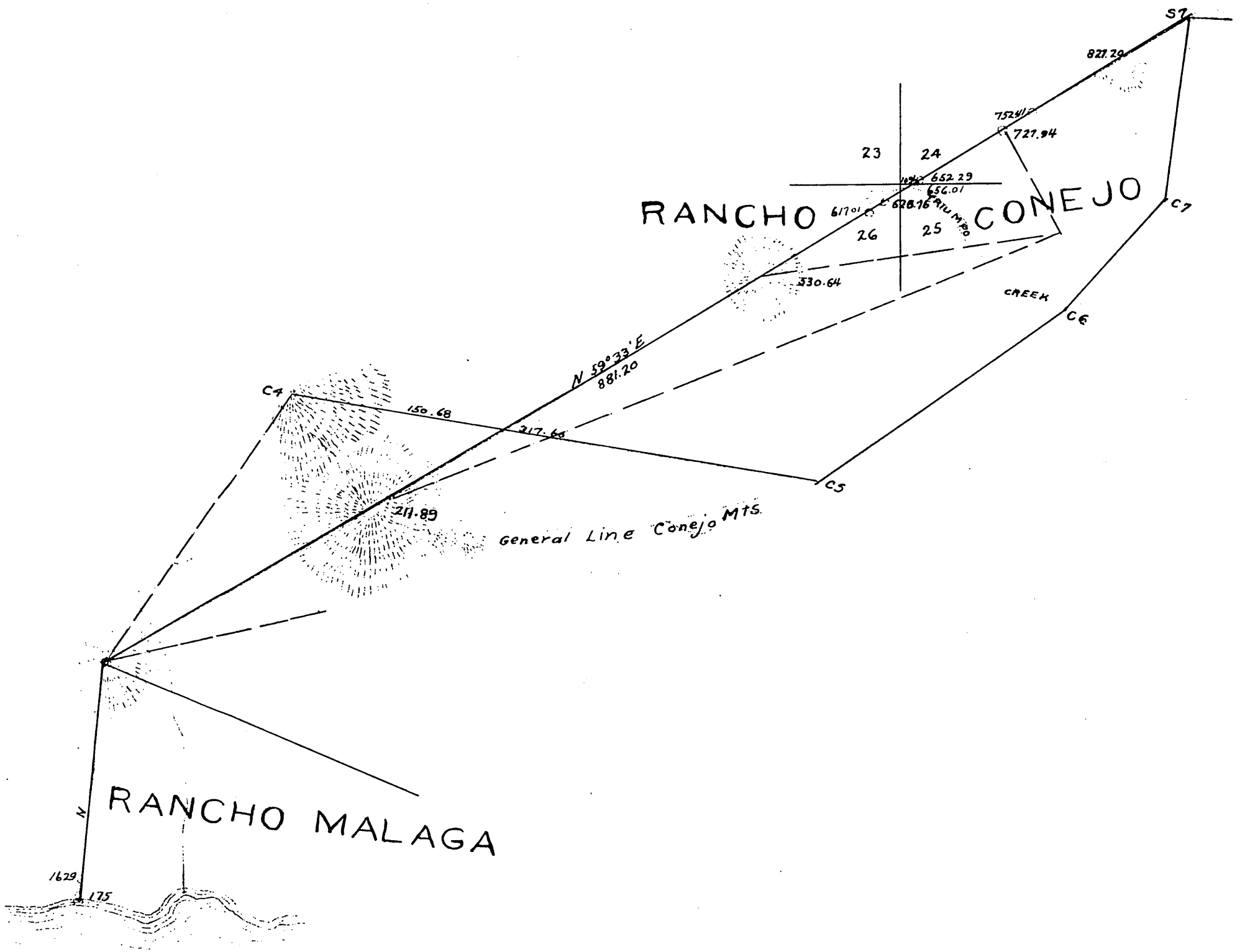


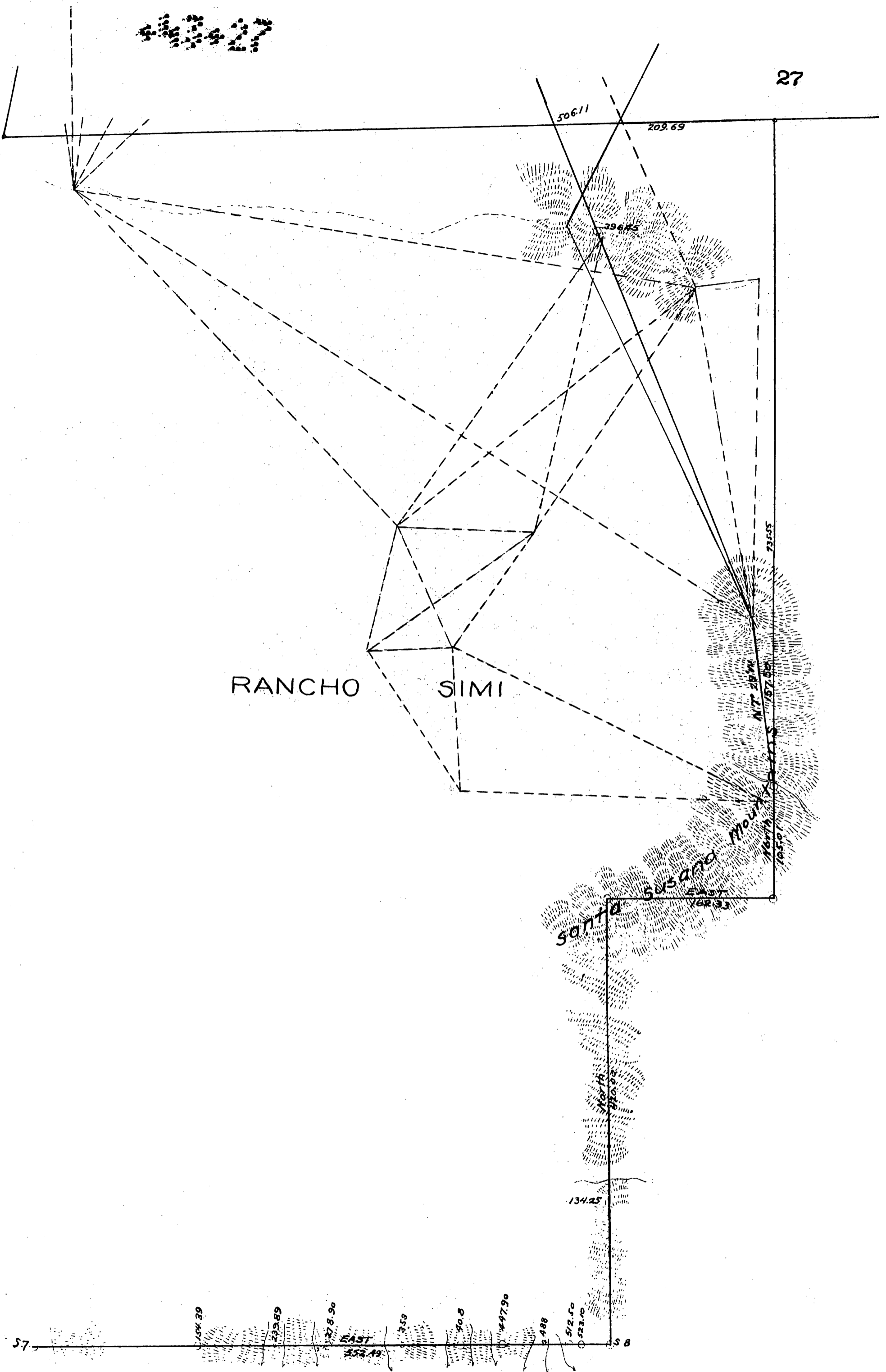
Map of
DIVIDING LINE
between
LOS ANGELES AND VENTURA
COUNTIES

*Surveyed June & July 1881
E. T. Wright & J. T. Stow, County Surveyors*

SCALE 80 CHAINS TO 1"



43





17.51 37

TEMESCAL

Pirya Creek
RANCHO

108.52

975.13

799.24

Camulos
Ranch
House

stage Road

RIVER

692.54

679.07

654.07

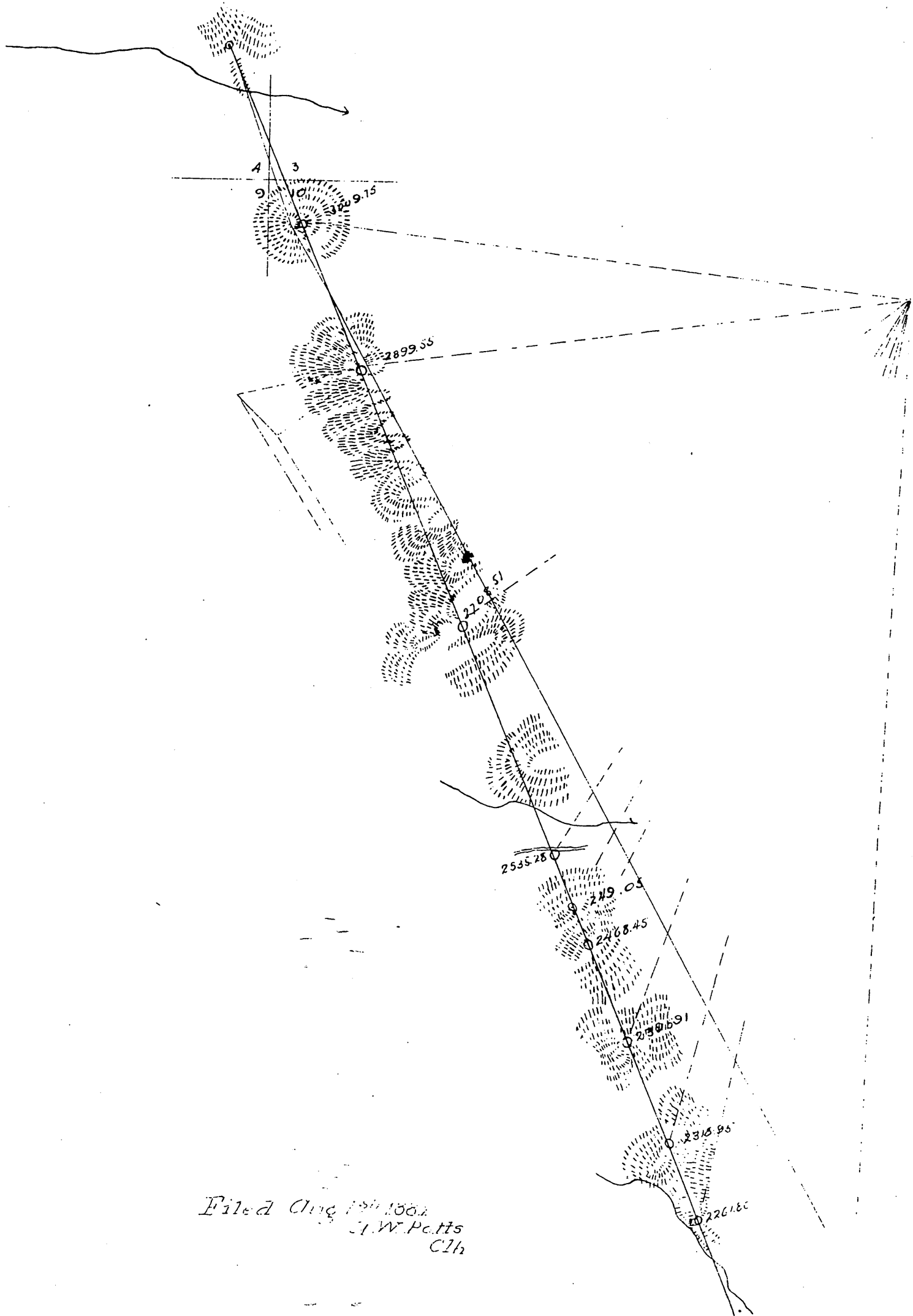
santa clara

RANCHO SAN FRANCISCO

506.11



4343



Filed Aug 12th 1891
 J. W. Pettis
 Clk

A full, true, and correct copy of original
 recorded Dec 16 1891, at 50 mile post 3 1/2 mi
 at request of Board of Supervisors S. O. Co.
 J. A. Kelly County Recorder
 By C. H. Miller Deputy.