

Survey

OF THE

BOUNDARY LINE

between

LOS ANGELES &
KERN COUNTIES

STATE OF CALIFORNIA

*By order of the Boards of Supervisors
of the aforesaid Counties*

Executed by

G W Orth for Kern County

Wm P Reynolds for Los Angeles County

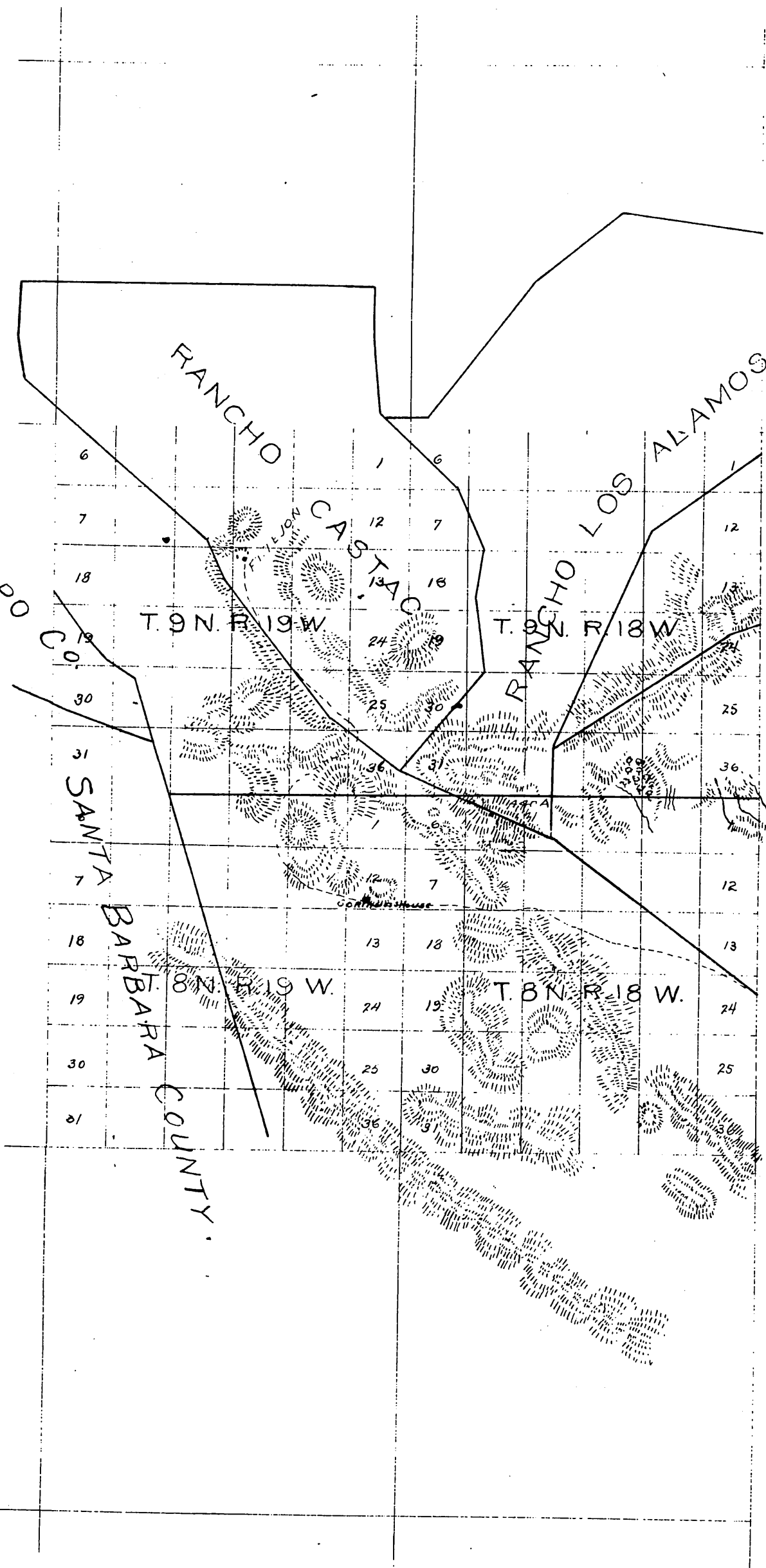
SCALE 80 CHAINS TO AN INCH

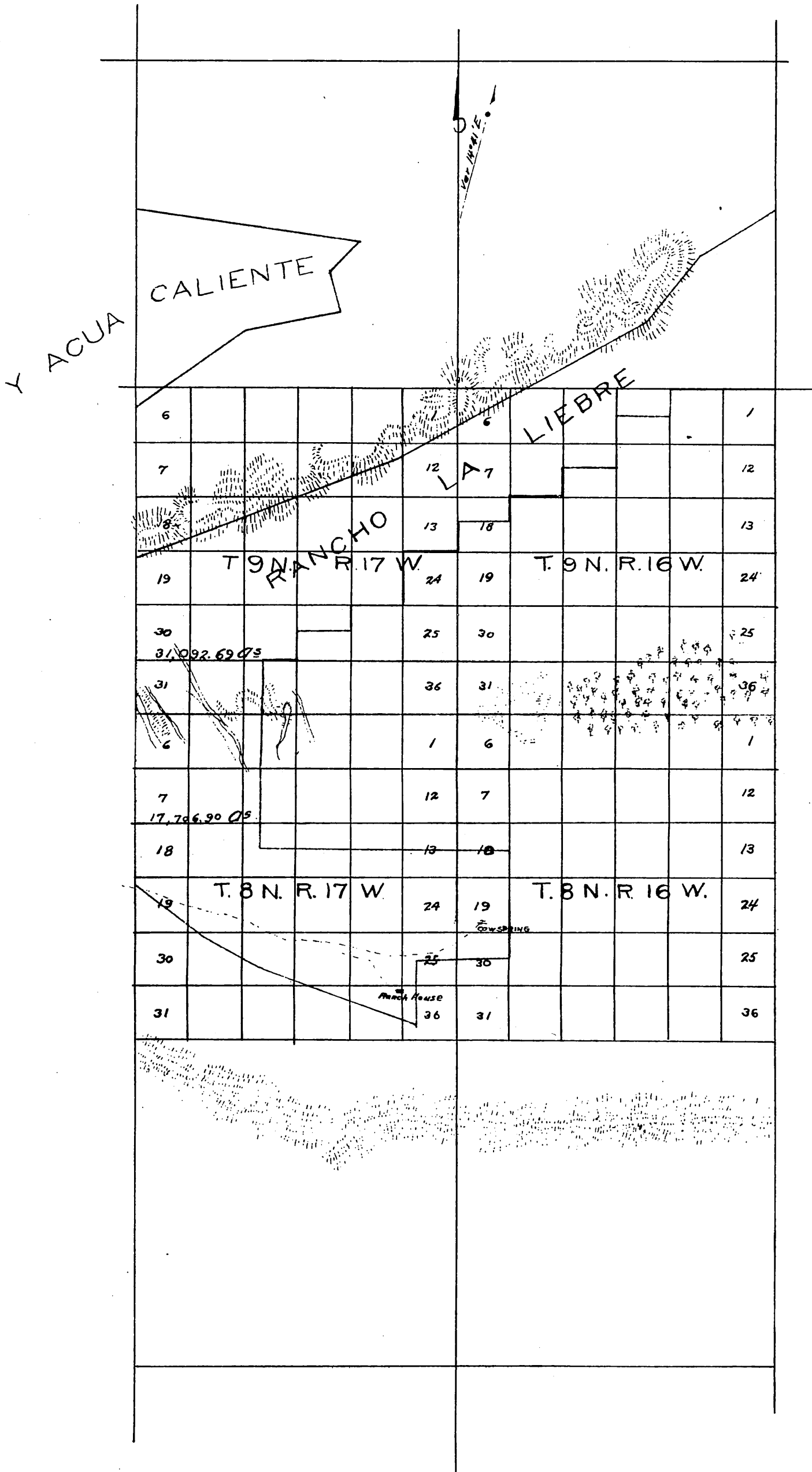
SAN LUIS OBISPO

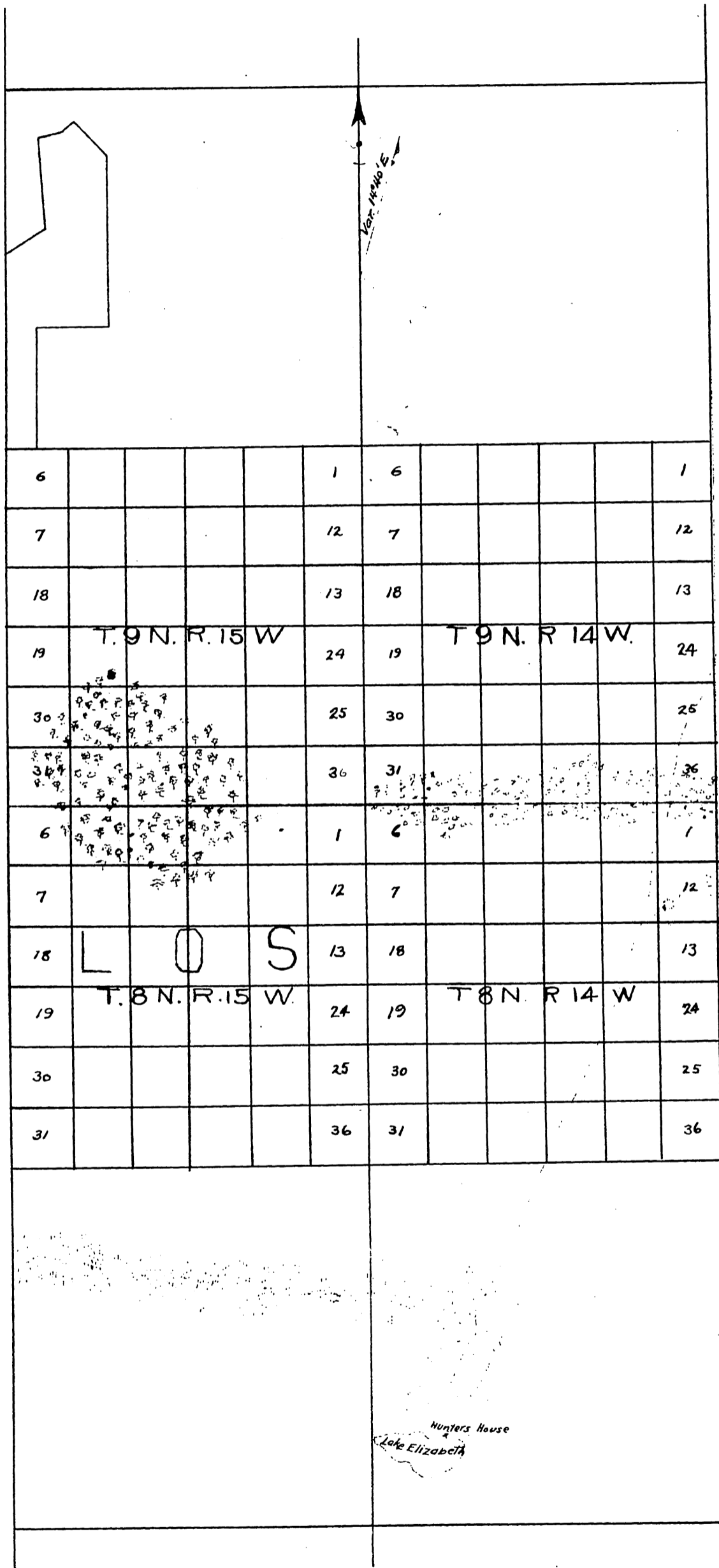
RANCHO CASTAÑO

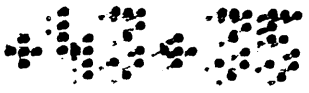
RANCHO LOS ALAMOS

SANTA BARBARA COUNTY









6					1	6					1
7					12	7					12
18				K	13	E	18	R		N	13
19				T 9 N. R. 13 W	24	19				T 9 N. R. 12 W	24
30					25	30					25
31					36	31					36
6					1	6					1
7					12	7					12
18				A	13	N	18	G		L	13
19				T 8 N. R. 13 W	24	19				T 8 N. R. 12 W	24
30					25	30					25
31					36	31					36

6					1	6					1				
7					12	7					12				
18	C	O	U	N	13	18	T	Y			13				
19	T	9	N.	R.	11	W	24	19	T.	9	N.	R.	10	W	24
30					25	30					25				
31	DRY LAKE				36	31	DRY LAKE				36				
						6	DRY LAKE				1				
						7					12				
	C	O	U	N	13		T	Y			13				
	T.	8	N.	R.	11	W	19	T.	8	N.	R.	10	W	24	
						30					25				
						31					36				

T. 9 N. R. 9 E.										
6				1	6				1	
7				12	7				12	
18				13	18				13	
19	T. 9 N. R. 9 W.				24	19	T. 9 N. R. 8 W.			
30				25	30				25	
31	DRY LAKE				36	31	 T. 9 N. R. 8 W. 			
6				1	6				1	
7				12	7				12	
18				13	18				13	
19	T. 8 N. R. 9 W.				24	19	T. 8 N. R. 8 W.			
30				25	30				25	
31				36	31				36	

18									
19	T. 9 N.		R 7 W						24
30									25
31									36
6									1
7									12
18									13
19	T. 8 N.		R 7 W						24
30									25
31									36

SAN BERNARDINO COUNTY

18
19 T. 9 N. R 7 W 24
30 25
31 36
6 1
7 12
18 13
19 T. 8 N. R 7 W 24
30 25
31 36

We hereby certify that this is a true and correct plot of the Boundary Line as above described, taken from the field notes of the same

Wm P Reynolds Surveyor for Los Angeles County
G. W. Orth Surveyor for Kern County

a full true and correct Copy of original (scale reduced to 160 chains to an inch) recorded Dec 16. 1891 at 52 min past 3 p.m at request of Board of Supervisors L.A county

J. A. Kelly County Recorder
By W. W. Mills Deputy

M.K

4330

South Gardena Tract

Stimson Bro's Subdivision of 391⁷²⁵ acres in San Pedro Rancho, Los Angeles County, Cal. Being parts of Sections 29, 30, 31 & 32, T.3 S. R.13 W S.B.M., as described in Deeds recorded in Book 633 Page 299, and in Book 712 Page 223, Los Angeles County, California

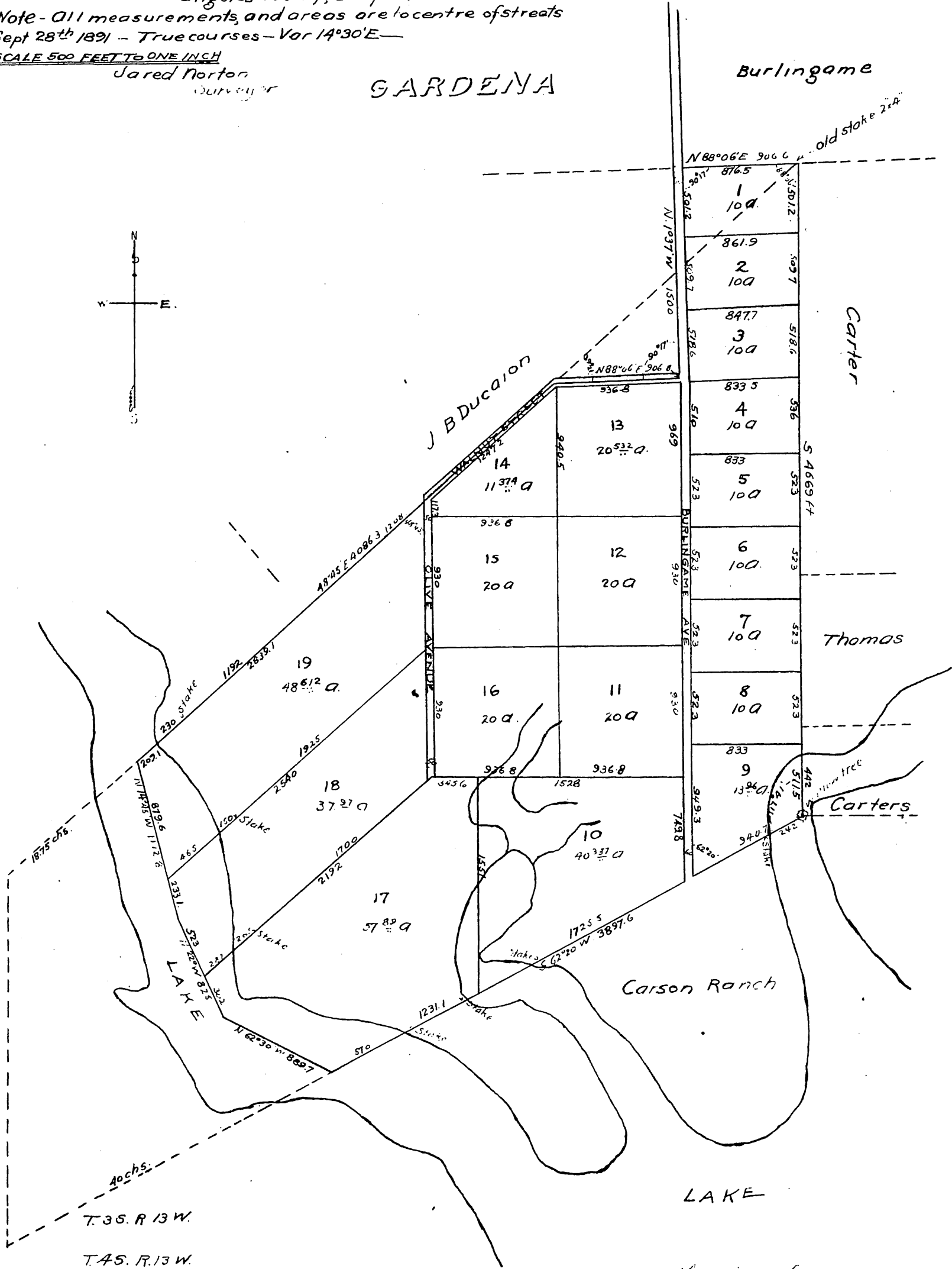
Note - All measurements, and areas are to centre of streets
Sept 28th 1891 - True courses - Var 14°30'E -

SCALE 500 FEET TO ONE INCH

Jared Norton
Surveyor

GARDENA

Burlingame



A full, true, and correct copy of the Original (Scale reduced to 800 feet to one inch) recorded Dec 17, 1891 at 58 min past 3 p.m. at request of Stimson Bros

J. St. Kelly County Recorder
By H. W. Mills Deputy