

South Gardena Tract

Stimson Bro's Subdivision of 391⁷²⁵ acres in San Pedro Rancho, Los Angeles County, Cal. Being parts of Sections 29, 30, 31 & 32, T.3 S. R.13 W S.B.M., as described in Deeds recorded in Book 633 Page 299, and in Book 712 Page 223, Los Angeles County, California

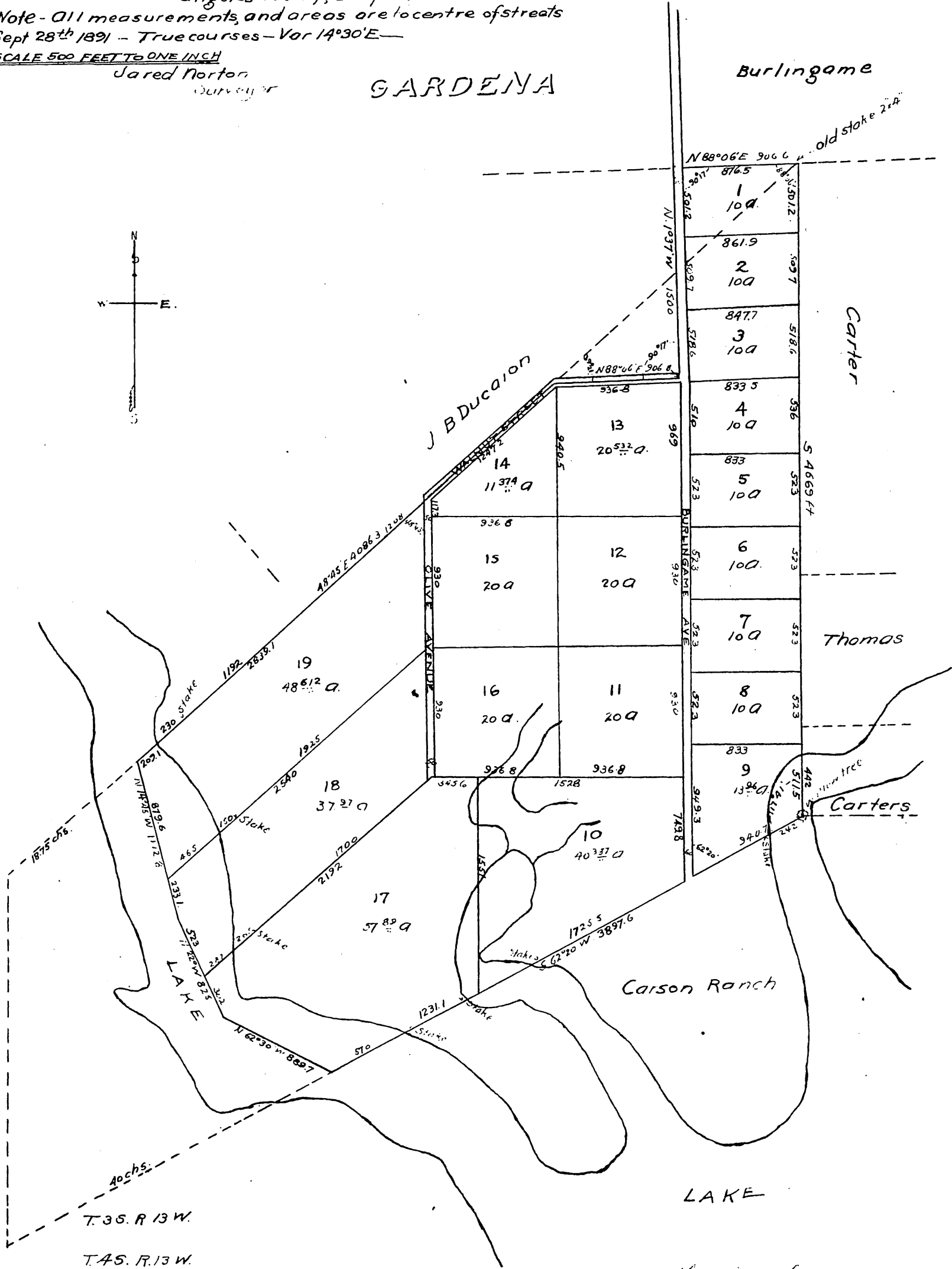
Note - All measurements, and areas are to centre of streets
Sept 28th 1891 - True courses - Var 14°30'E -

SCALE 500 FEET TO ONE INCH

Jared Norton
Surveyor

GARDENA

Burlingame



A full, true, and correct copy of the Original (Scale reduced to 800 feet to one inch) recorded Dec 17, 1891 at 58 min past 3 p.m. at request of Stimson Bros

J. St. Kelly County Recorder
By W. H. Mills Deputy