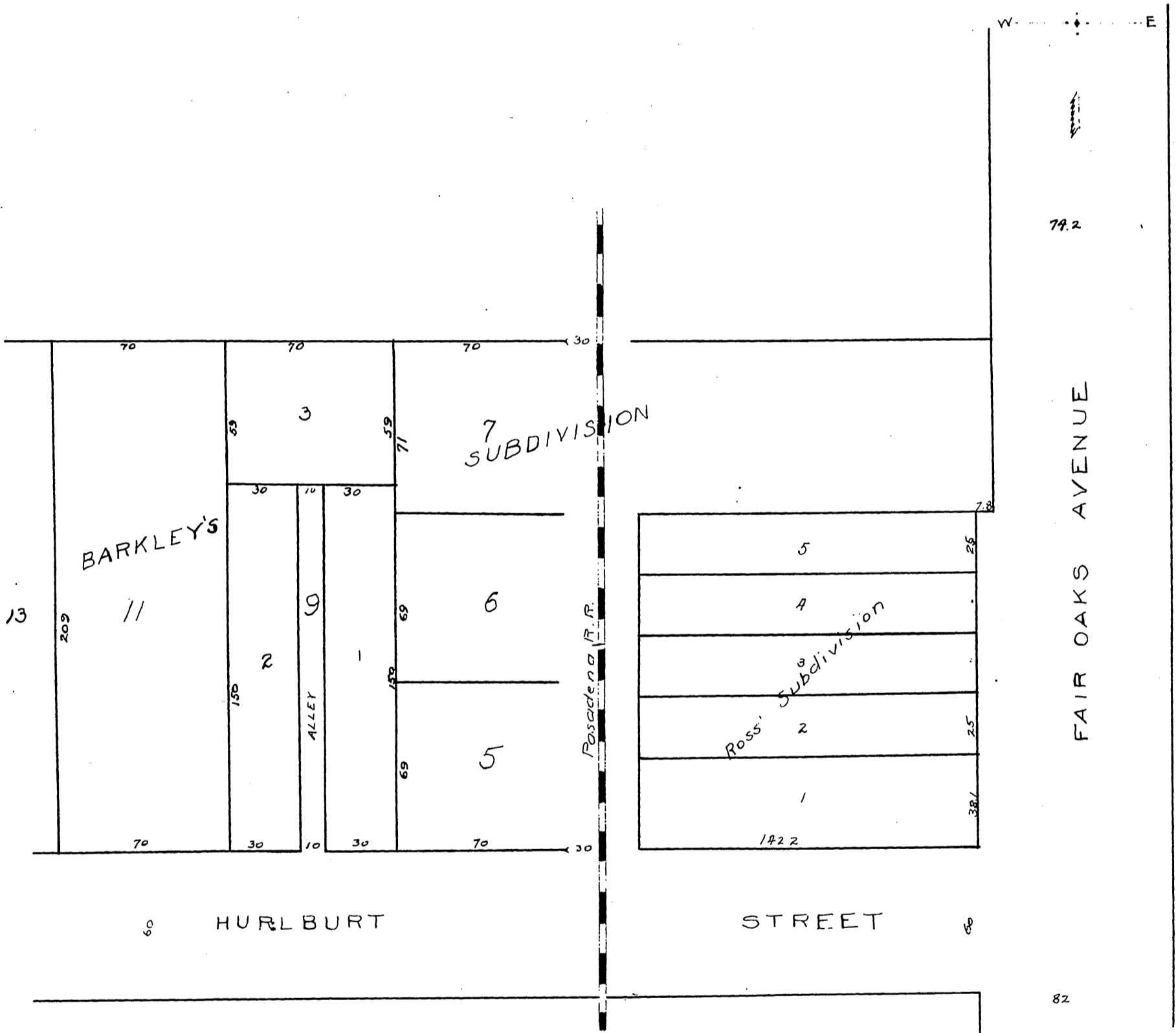


Map
 OF
 Alfred Ellis
 Subdivision of Lot 9, Barclay's
 subdivision of the Gilmore Vine
 -yard Tract.
 According to map thereof recorded
 in Book 7, Page 84, of Miscellaneous
 Records of Los Angeles County, Calif.
 Dec. 1891
 Drawn by J. Norton C.E.

SCALE 50 FEET TO ONE INCH



A full, true and correct copy of original
 recorded Dec. 19, 1891 at 20 min, past 4 PM
 at request of Stimson Bros.

J. A. Kelly County Recorder.
 By W. W. Mills Deputy.