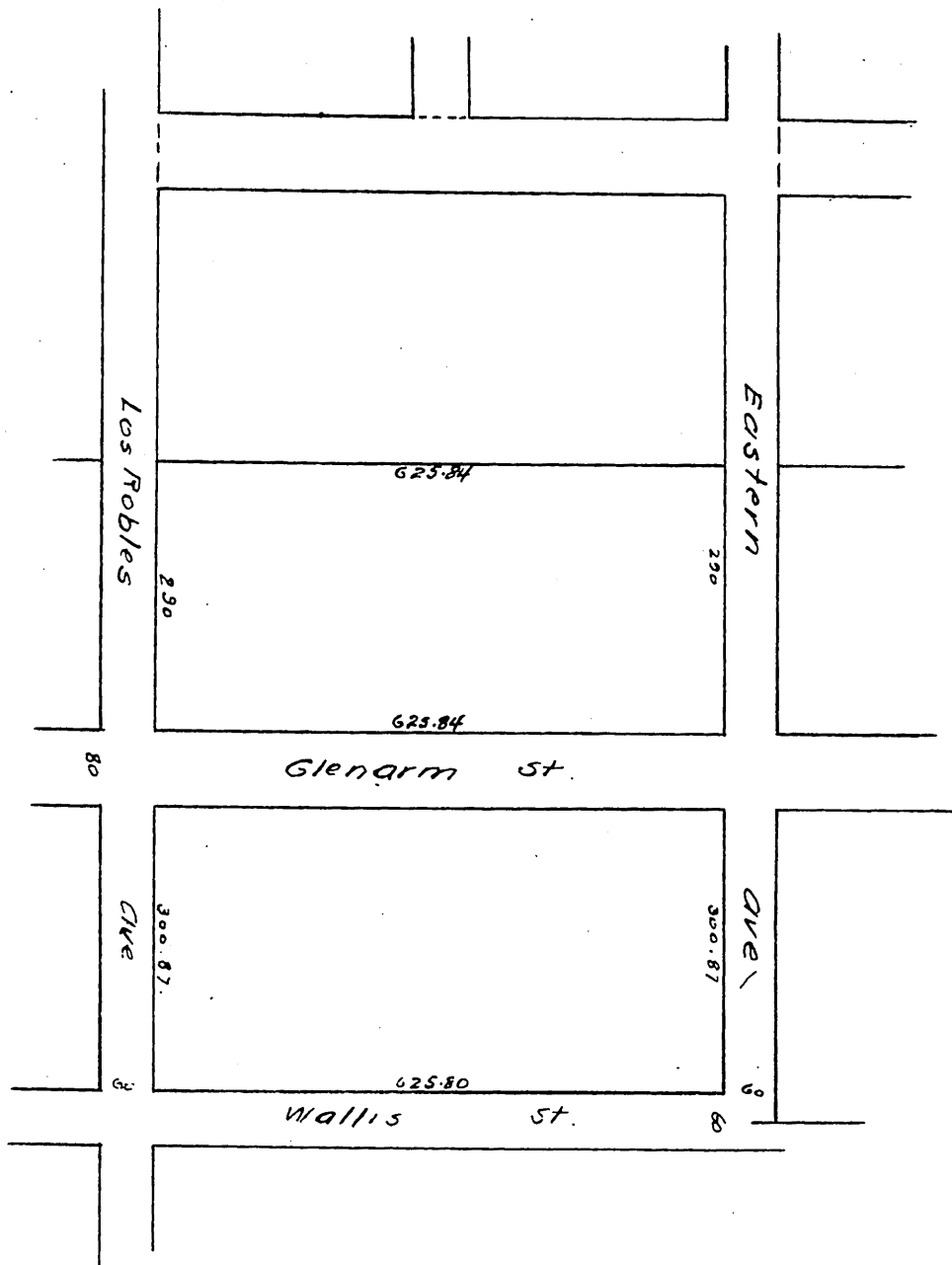


# Map of A. C. LEIGHTON'S

Replat of Block V, and South  
parts of Blks S, and T, of the  
Raymond Addition, as per maps  
of same, recorded in Book 13, Pages  
19 to 21 Miscellaneous Records, Los  
Angeles Co. Cal.

Done by resolution of the Board of Trustees of the City of  
Pasadena Dec. 5<sup>th</sup> 1891. A copy of which resolutions were re-  
corded Dec. 22<sup>d</sup> 1891 in the office of the County Recorder  
of Los Angeles County.



A full true and correct copy of original  
recorded Dec 22 1891 at 41 min past 12 m  
at request of J. C. Benson

J. C. Kelly County Recorder  
By W. W. Mills Deputy