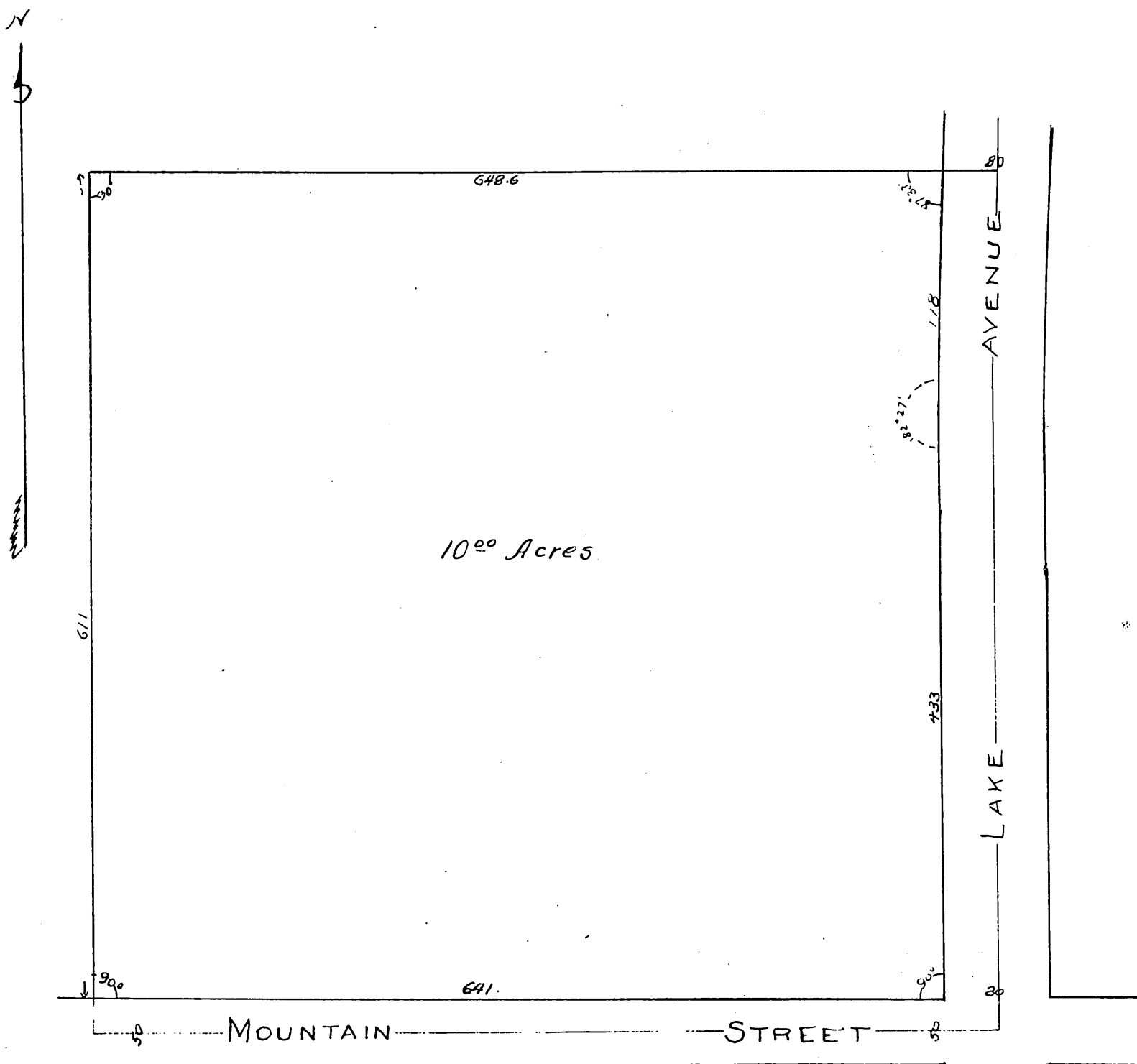


RE-PLAT OF THE STERLING TRACT

Recorded in Book 22 Page 91 Mis Rec.
Being the North West corner of Lake
Ave and Mountain Street, compris-
ing 10 acres. Pasadena Los Angeles Co. Cal.

SCALE: 100 FT TO 1 IN

As per Resolution passed by the Board of Sup-
erisors of date March 9th 1891.



A full true and correct copy of original
recorded Dec. 28 1891 at 46 min past 1 p.m.
at request of W. H. Griffin
J. A. Kelly County Recorder.
By W. W. Mills Deputy