

MAP
SHOWING SUBDIVISION OF
**RANCHO
PROVIDENCIA**
AND
**SCOTT
TRACT**

resurveyed and replatted at request of the
PROVIDENCIA
LAND WATER AND DEVELOPMENT CO.

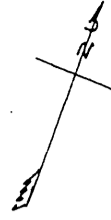
By V. J. Rowan
Surveyor

SCALE 8 CHAINS TO ONE INCH

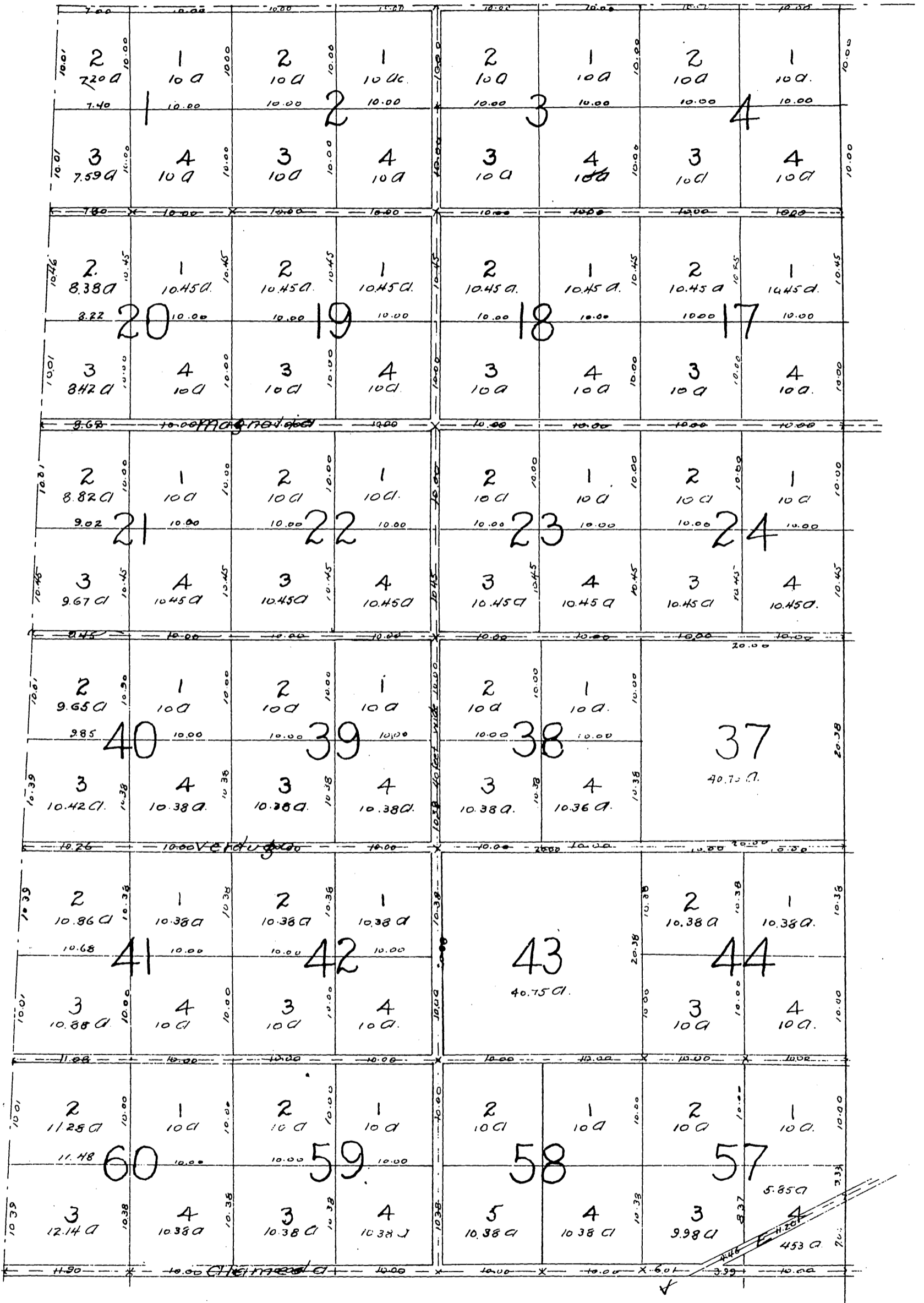
Note

*This map is compiled from a map showing
Subdivision of Rancho Providencia & Scott
Tract" recorded in Book 17, at pages 15, 16, 11, 18
Miscellaneous Records of Los Angeles County,
California, and surveys made during November
1891 by V. J. Rowan, a plat of the same having been
filed in the office of the County Recorder of said
county. Subdivisions and Street lines not on the
above mentioned maps, have been platted un-
der instructions and by order of the Providencia
Land Water and Development Co.*

*All areas are calculated to center of
Streets up to and along which all meas-
urements are taken, except where same
is noted on map.
The letter A is used as an abbreviation
of the word acres.
All distances are in chains and links
except where noted.*



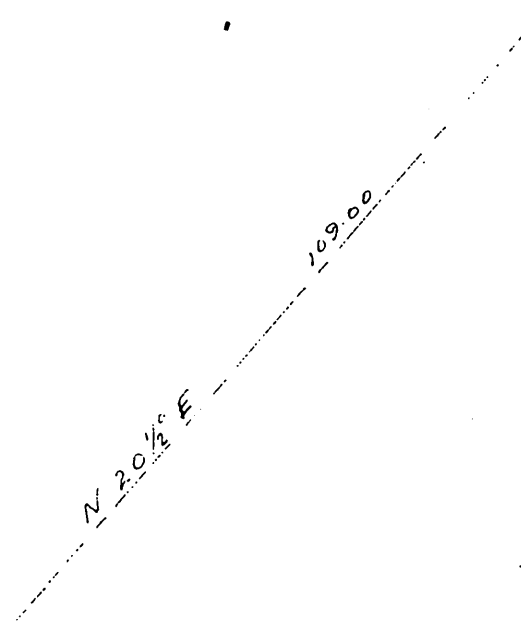
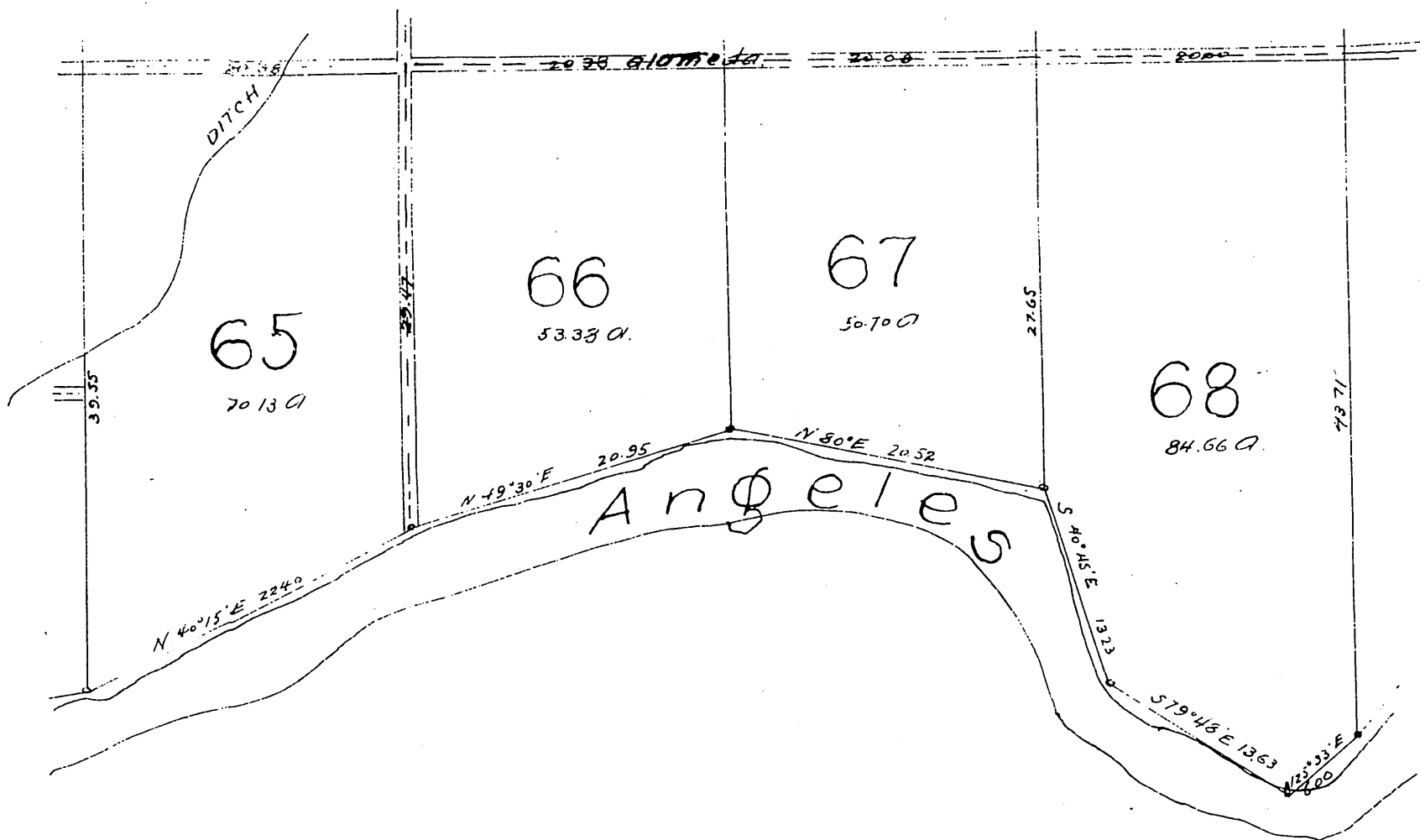
P. No. 3



61

0

64

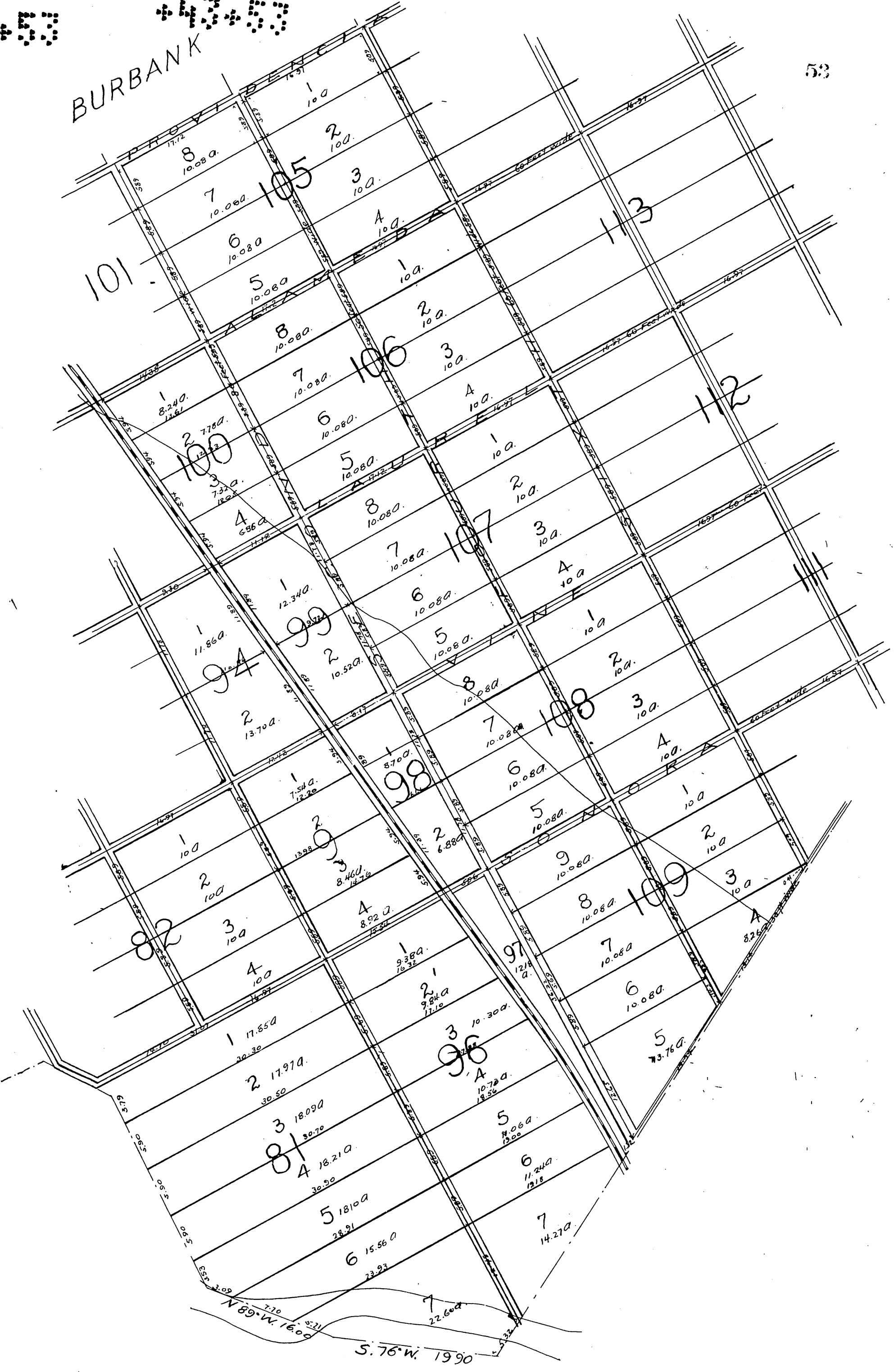


R.N. 5

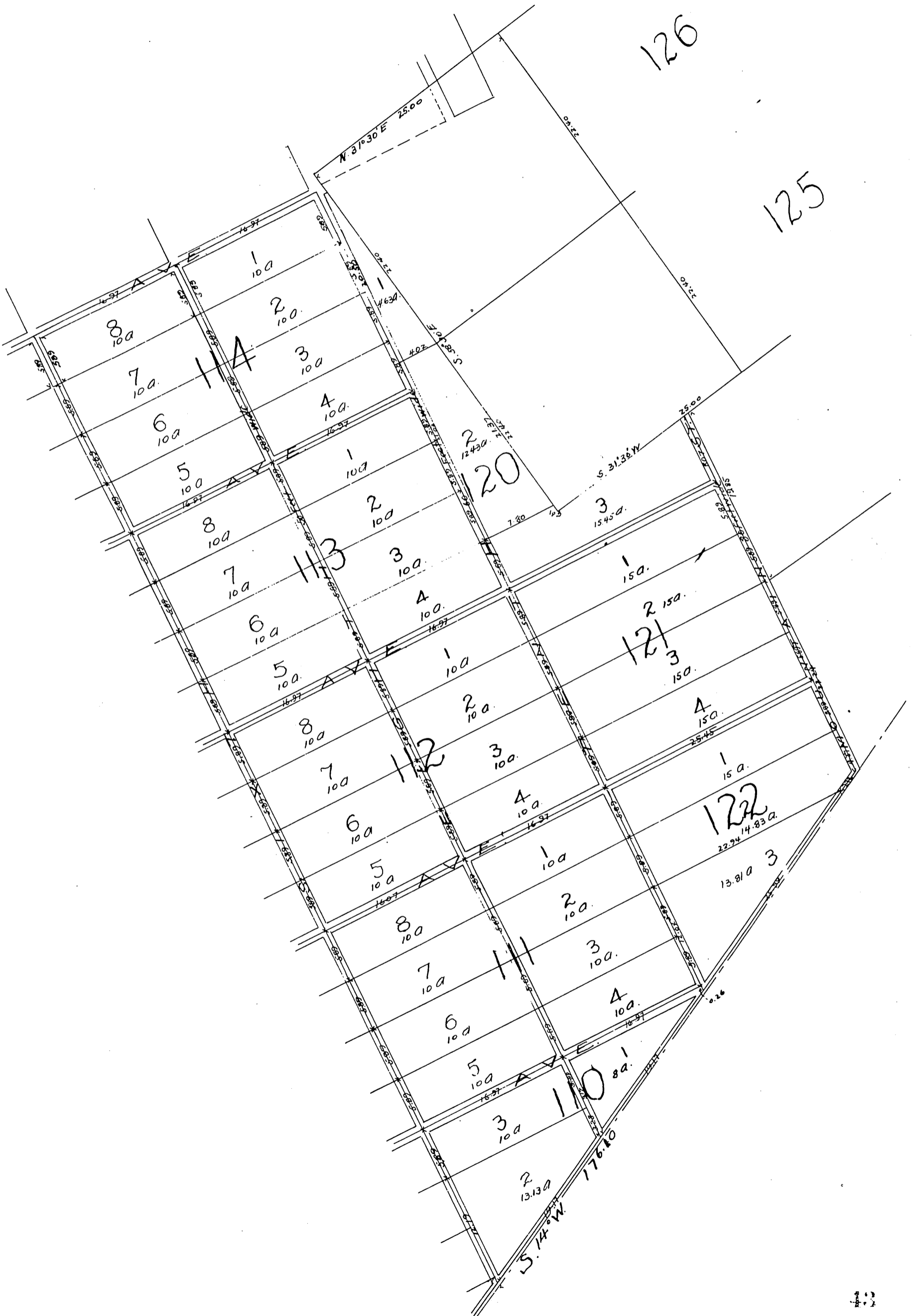
53

BURBANK

53



43



126

125

122

121

20

12

13

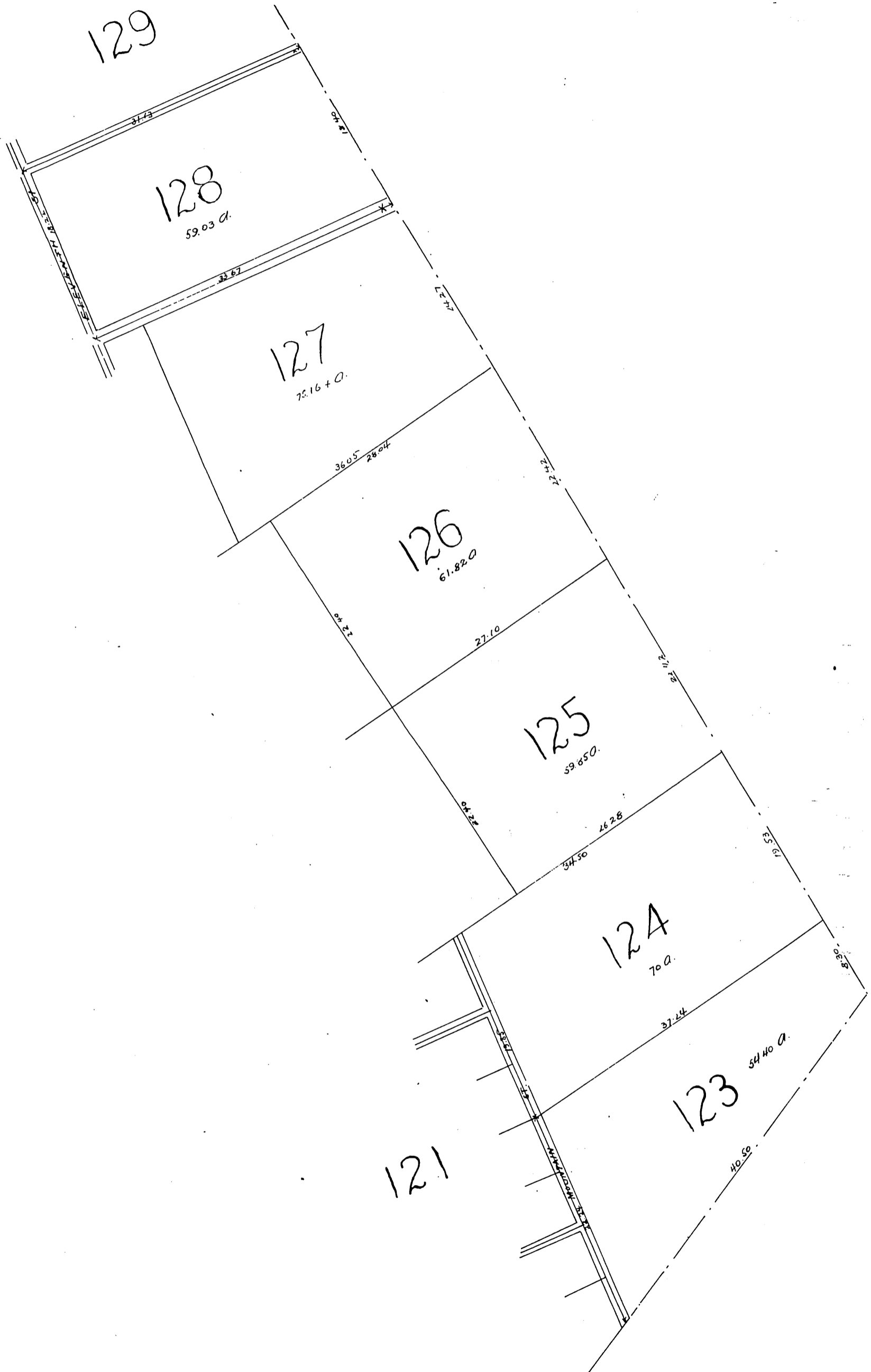
11

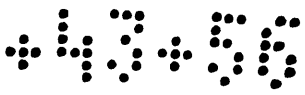
10

+ 43-55

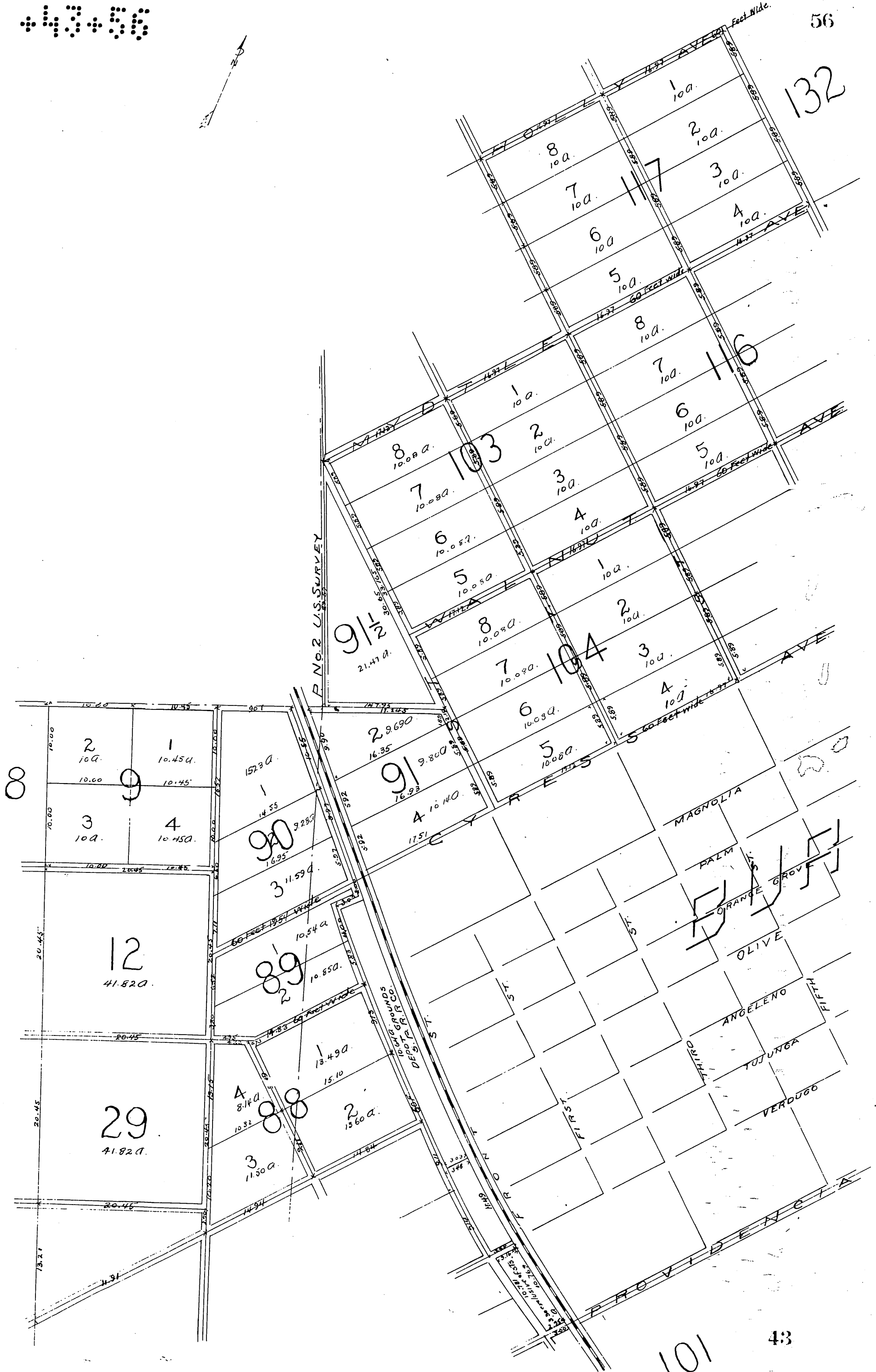


55

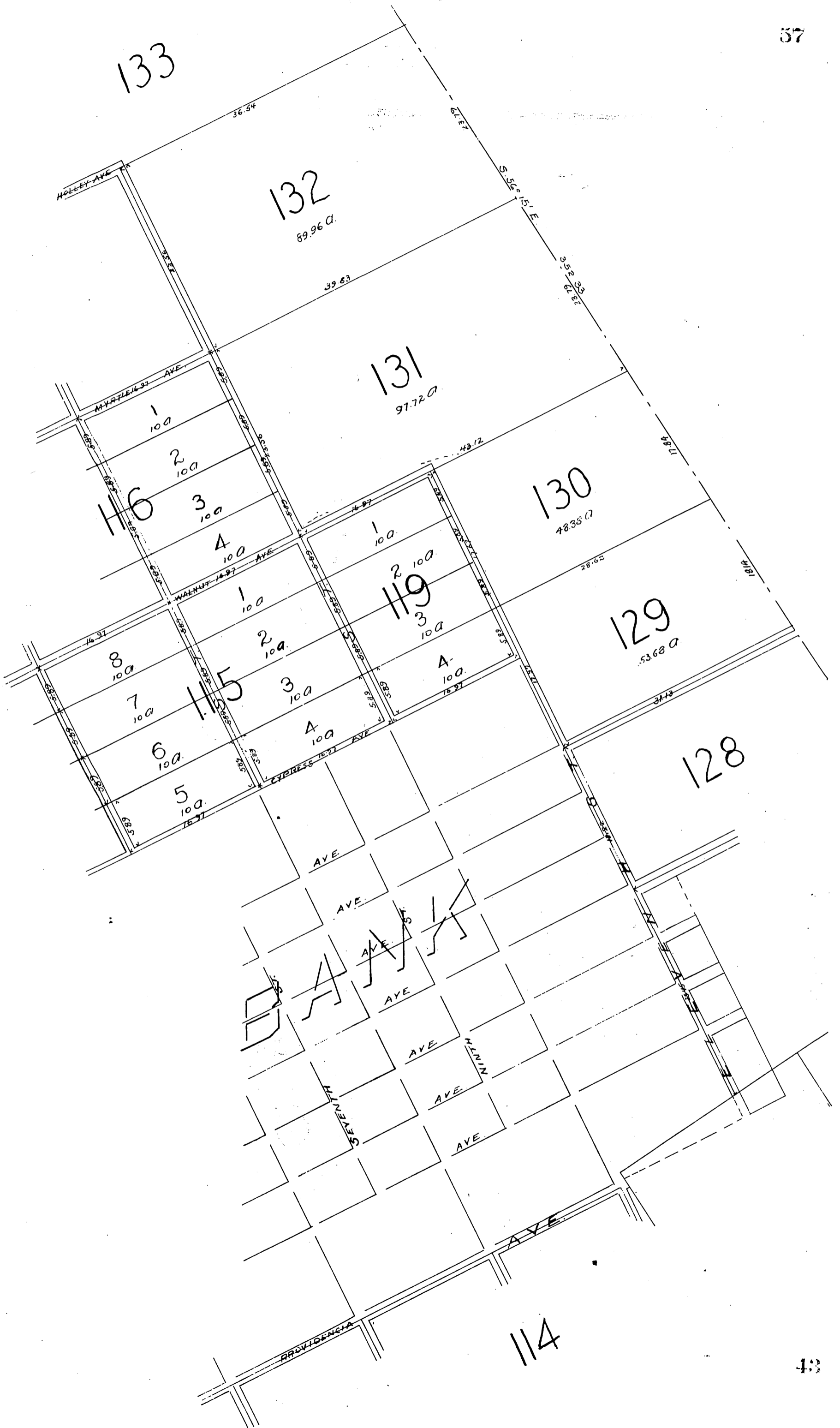


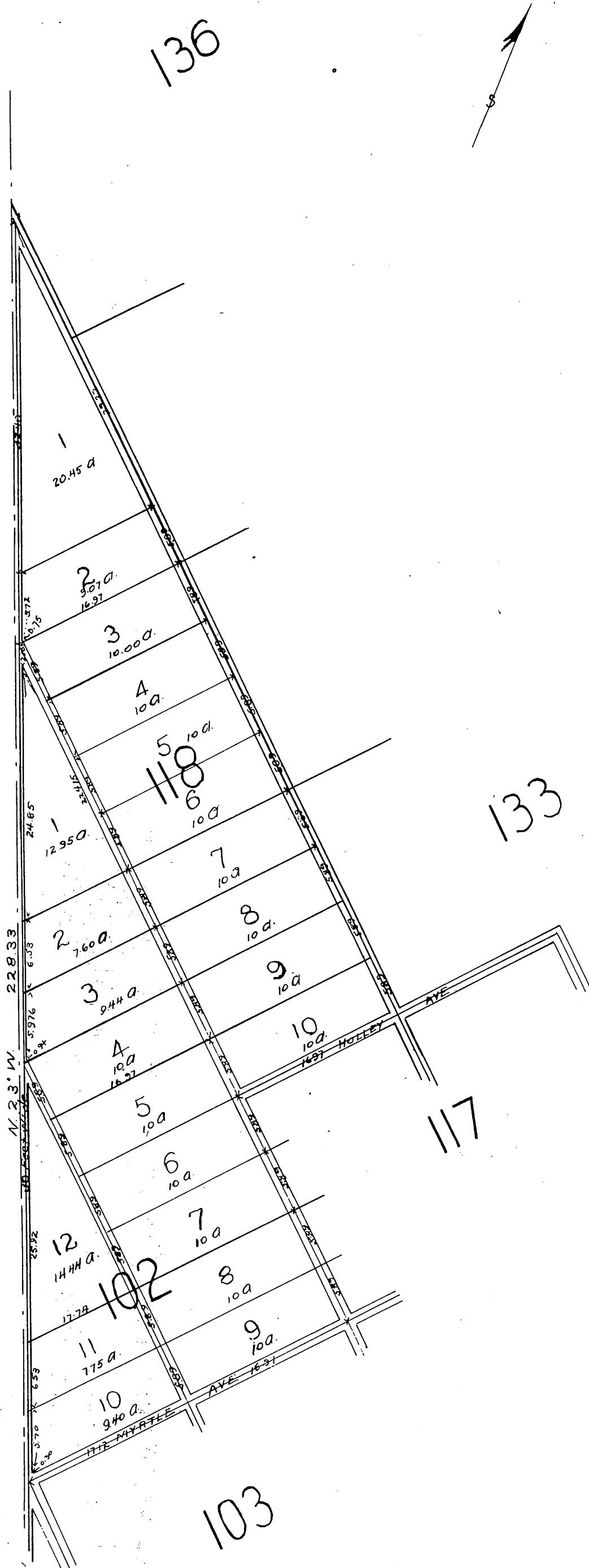


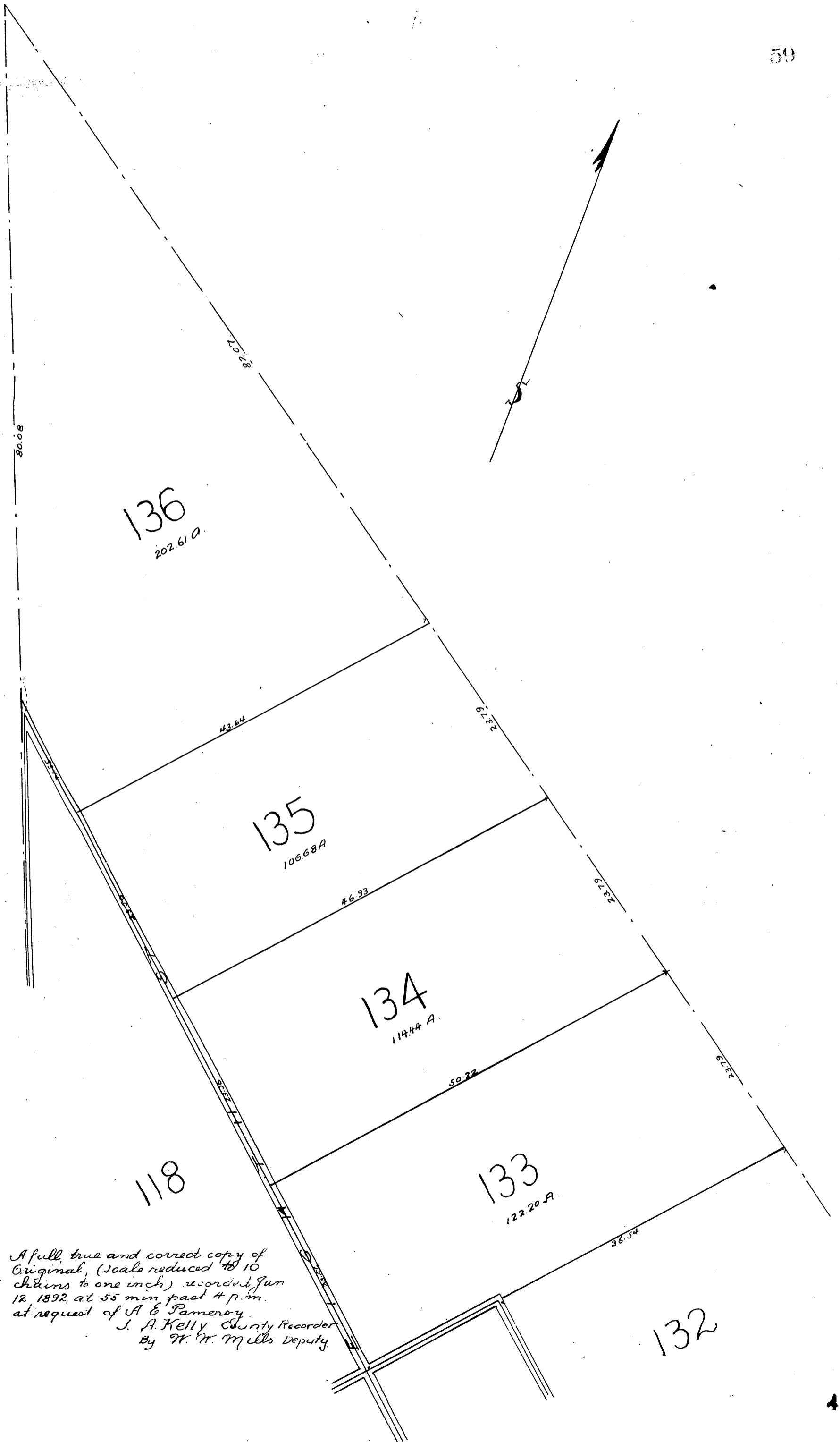
132



101







A full, true and correct copy of
 Original, (Scale reduced to 10
 chains to one inch) recorded Jan
 12, 1892, at 55 min past 4 p.m.
 at request of A. E. Pameroy.
 J. A. Kelly County Recorder
 By W. W. Mills Deputy