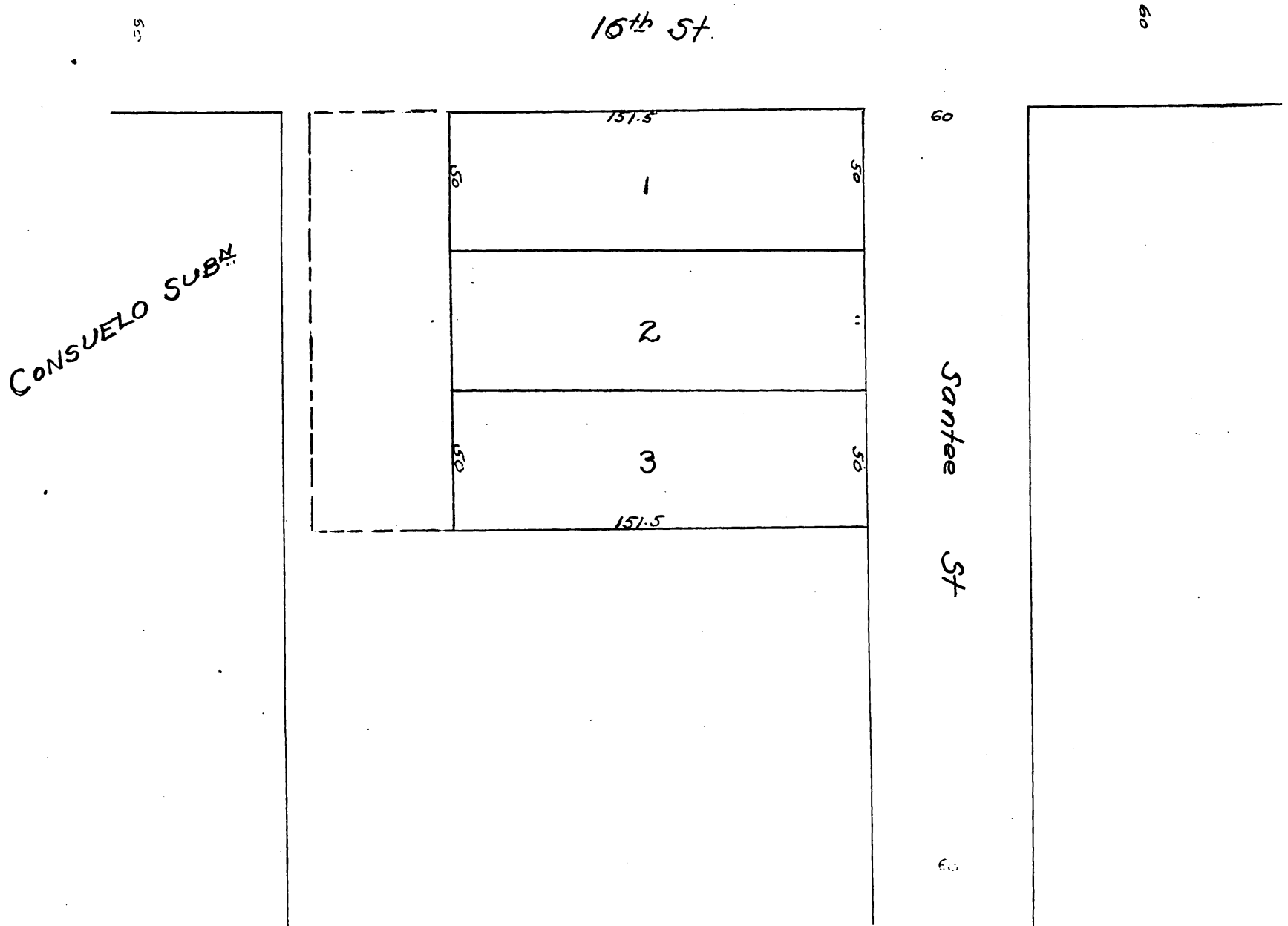


Map of
 Lords Subdivision
 of Lots 2, 3 and 4, in Subⁿ
 n^o 1 of the Celis Vineyard
 Tract.

Scale 50 ft one inch.



A full true and correct copy of original
 recorded Feb 5 1892 at 25 min past 3 P.M.
 at request of Andrew Lord
 J. A. Kelly, County Recorder
 By W. H. Hill, Deputy