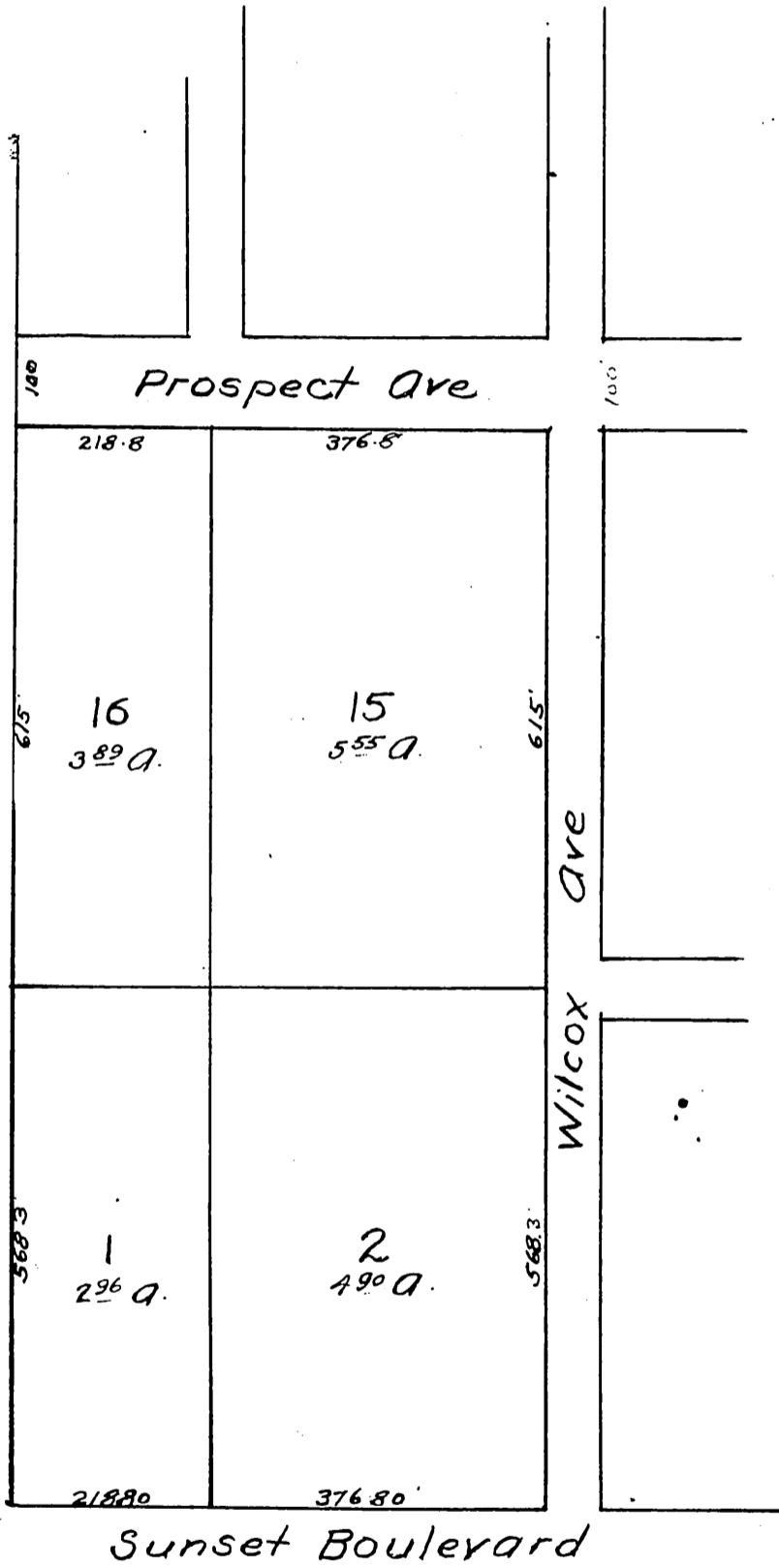


Map of
Blocks 1, 2, 15 and 16
HOLLYWOOD
after vacation of Streets
by order of the Board of Su-
pervisors
Scale 200'=1"



A full true and correct copy of original
recorded Feb 8 1892 at 14 min past 11 A.M.
at request of E. S. Baker
J. A. Kelly County Recorder.
By W. W. Mills Deputy