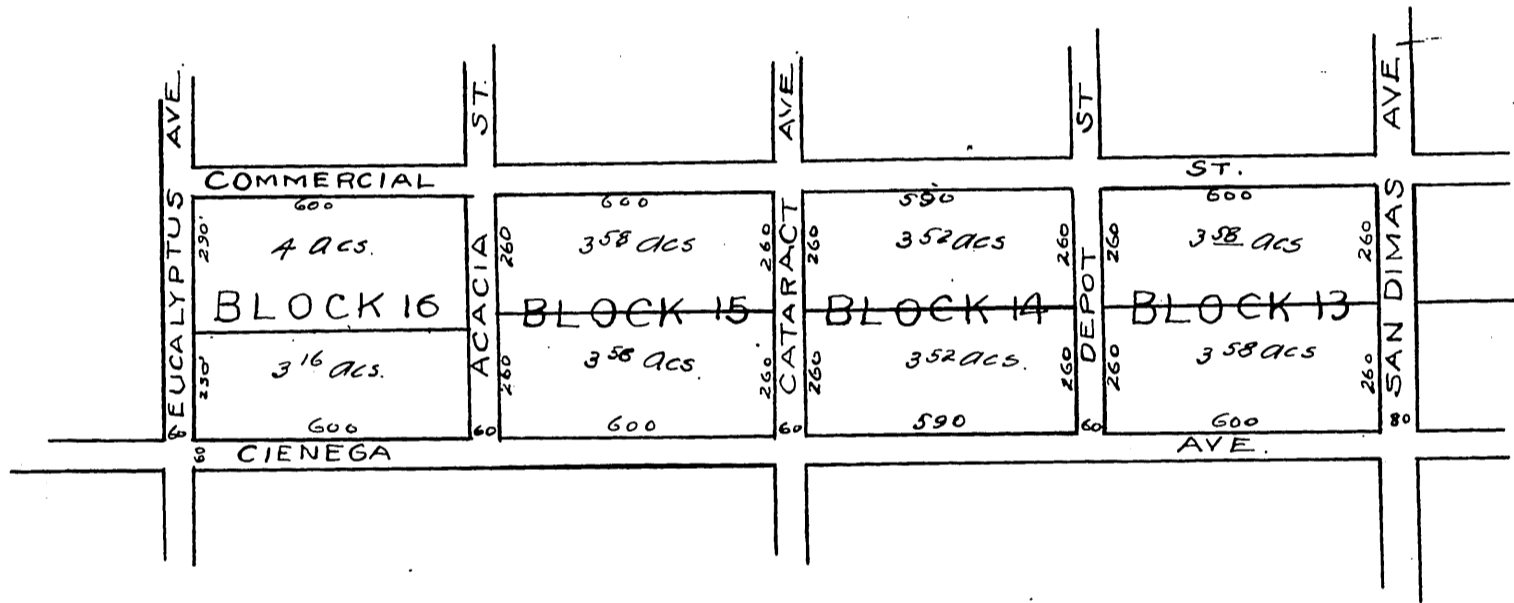


# Suplimental Map of the Replat of the Town of SAN DIMAS.

Being a plat of Blocks 13, 14, 15, 16 of said Town of San Dimas, and bounded north by Commercial St. east by San Dimas Ave, south by Cienea Ave., and west by Eucalyptus Ave

This Map is made to correct errors in measurements of Blocks as shown in map as recorded in Book 37 page 31 Miscellaneous Records of Los Angeles County.



A full, true and correct copy of original recorded Feb 19, 1892 at 25 min past 10 A.M. at request of Los Angeles Abst. Co

J. A. Kelly County Recorder  
By W. W. Miles Deputy.