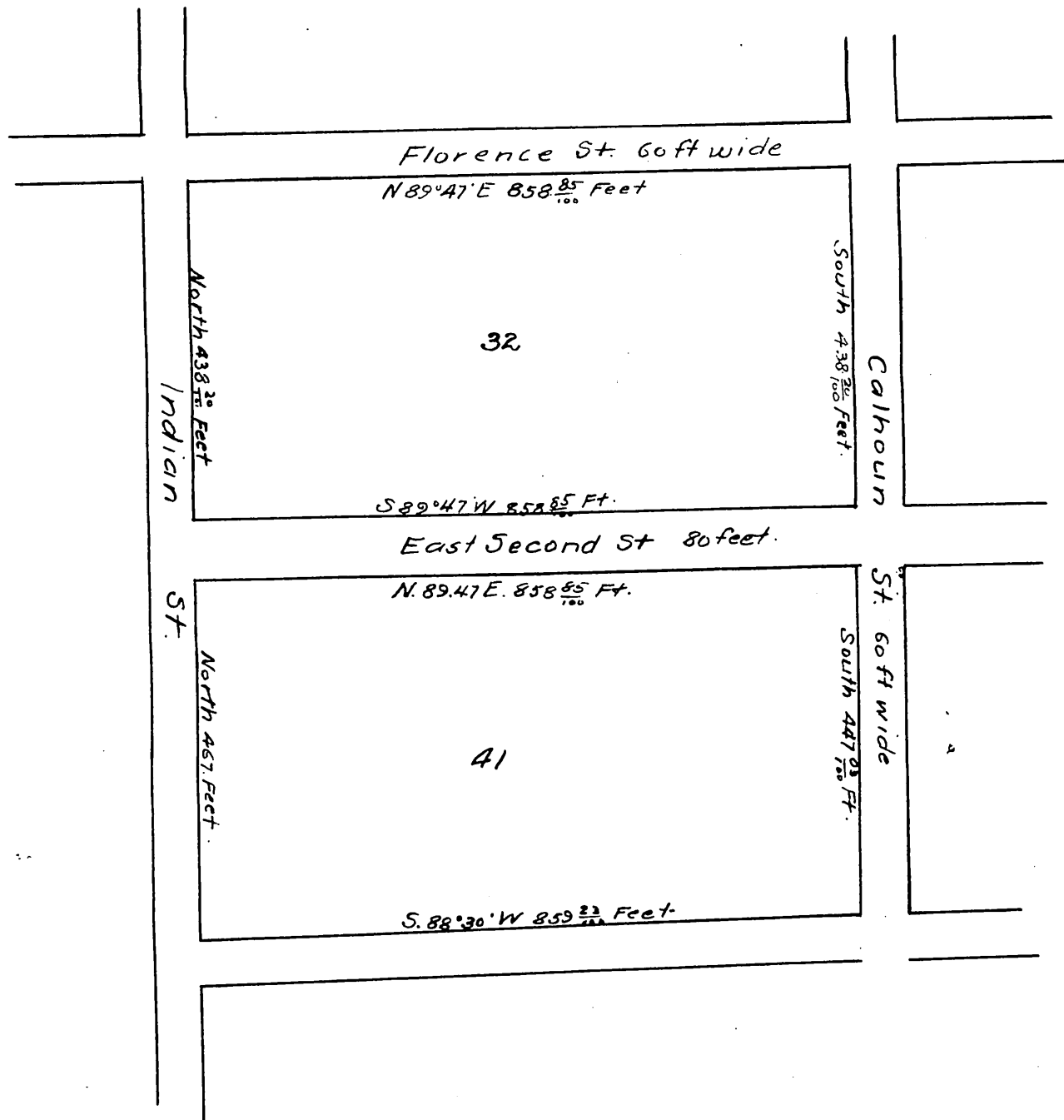


Map of the land  
embraced in Blocks 32 and 41  
of the  
**HOLLOWAY PARK TRACT**  
As recorded in Book 25, Page 26  
Miscellaneous Records of Los  
Angeles Co. California.

I hereby certify that at a regular meeting of the Board of Supervisors held on February 27<sup>th</sup> 1891, by motion duly seconded and carried, it was ordered that  
xxx Blocks Thirty-Two and Forty-one in Holloway Park Tract, as per map recorded in Book 25 Page 26 of Miscellaneous Records of Los Angeles County, be reverted into acreage and the alleys in said Blocks be vacated: conditioned upon filing map of said property with the Recorder"

T. H. Ward Clerk.  
By W. H. Whittemore Deputy.



A full, true and correct copy of original  
recorded Feb 20, 1892 at 46 min past 10 a.m.  
at request of Geo. F. Hanley.  
J. A. Kelly County Recorder.  
By W. W. Mills Deputy