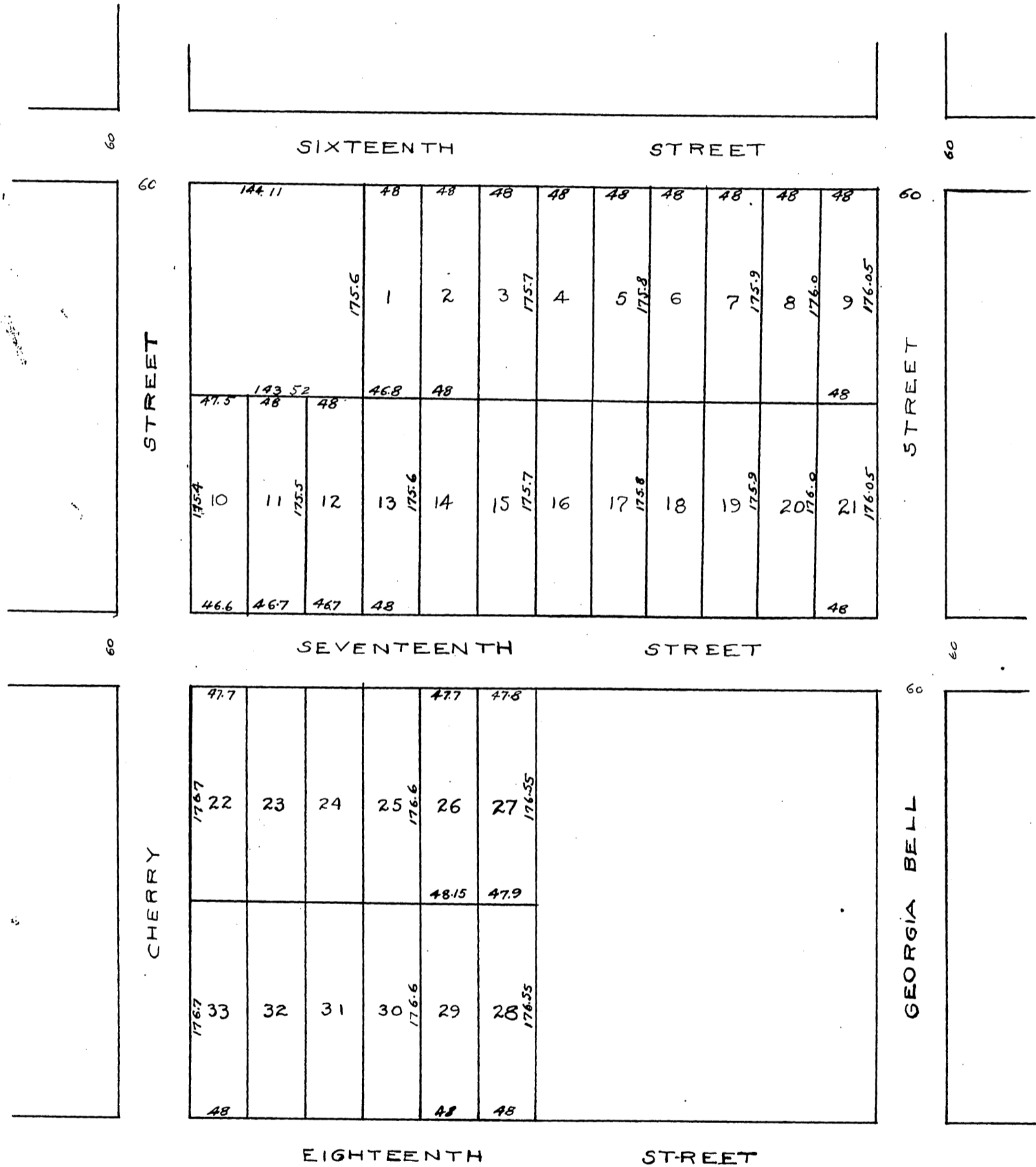


Map of E. H. LINSENBARD'S SUBDIVISION

of parts of Blocks 4 and 5 Bell's
Addition to Los Angeles, Los Ang-
-eles County, California

Surveyed and platted
June 1888 by Clarence A. Miller

SCALE 100 FEET = 1 INCH.



A full, true, and correct copy of original
recorded Feb 23, 1892 at 50 min past 1 P.M.
at request of E. H. Linsensbard
J. A. Kelly County Recorder.
By W. W. Mills Deputy.