

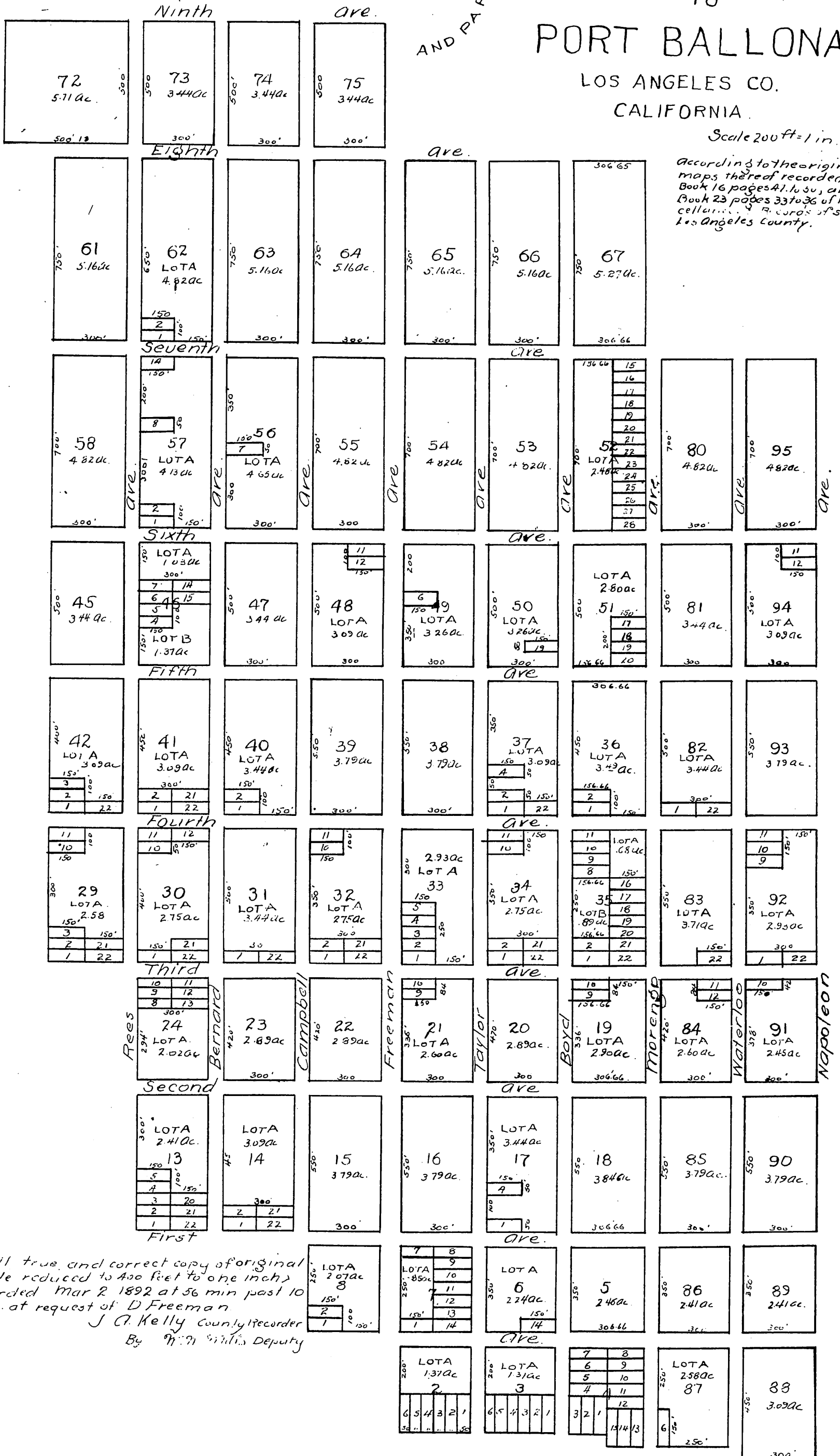
Map of a re-subdivision OF PART OF PORT BALLONA

AND PART OF WICKS ADDITION TO PORT BALLONA

LOS ANGELES CO.
CALIFORNIA.

Scale 200 ft = 1 in.

According to the original maps thereof recorded in Book 16 pages 41, 43, and Book 23 pages 33 to 36 of Miscellaneous Records of said Los Angeles County.



A full true and correct copy of original
(scale reduced to 400 feet to one inch)
recorded Mar 2 1892 at 56 min past 10
A.M. at request of D. Freeman
J. A. Kelly County Recorder
By W. M. Smith, Deputy