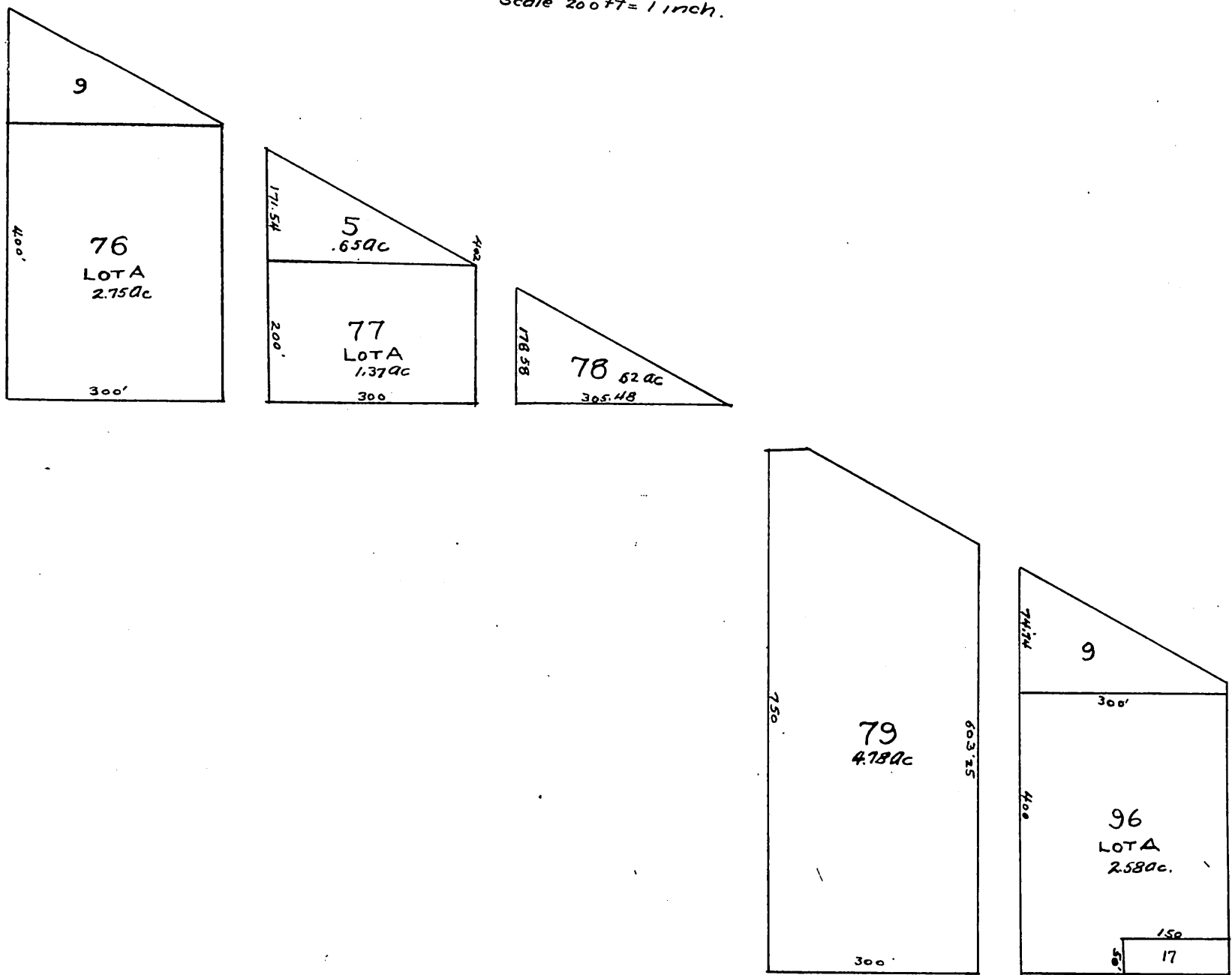


Map of a re-subdivision  
 OF A PART OF  
 Wicks Addition  
 TO  
 Port Ballona  
 Los Angeles County  
 Cal

According to the original map  
 The reef recorded in Book 23 pages  
 33 to 36 of Miscellaneous Records  
 of said Los Angeles County  
 scale 200 ft = 1 inch.



A full, true and correct copy of original  
 recorded Mar 2, 1892 at 58 min past 10 a.m.  
 at request of D Freeman  
 J. A. Kelly County Recorder  
 By W W Mills Deputy